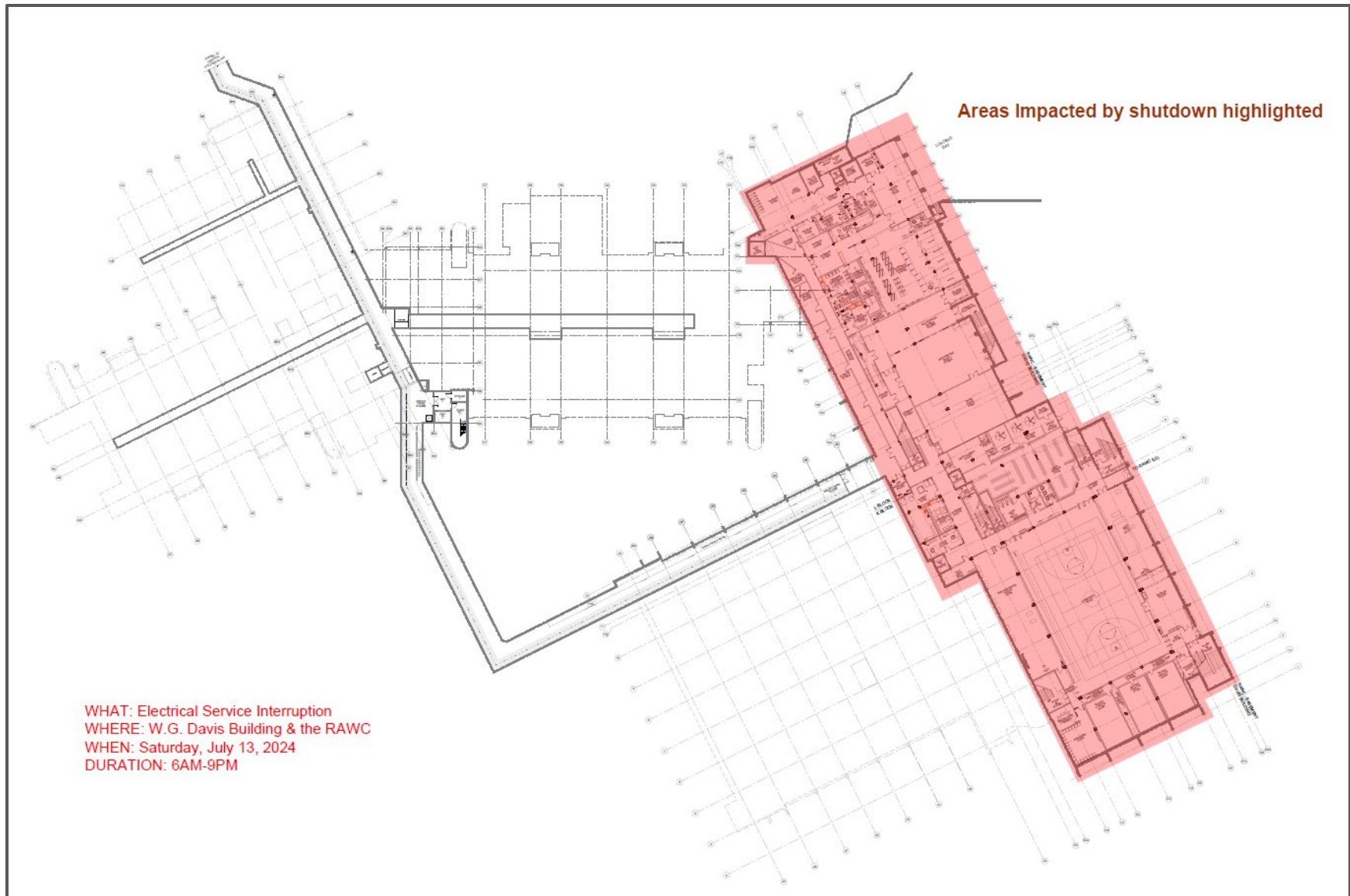
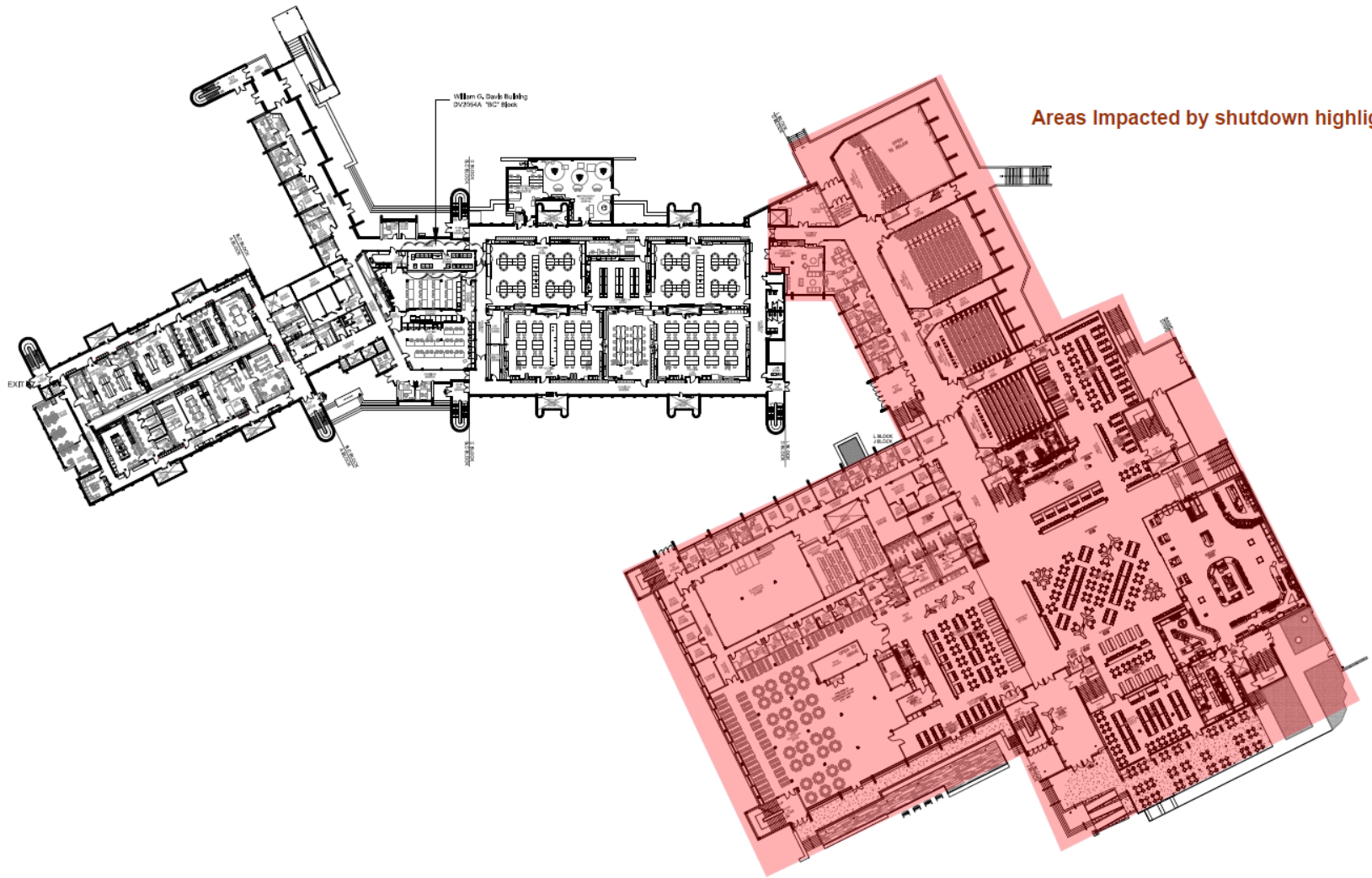


William G. Davis Building Level 0 (Blocks K and L)

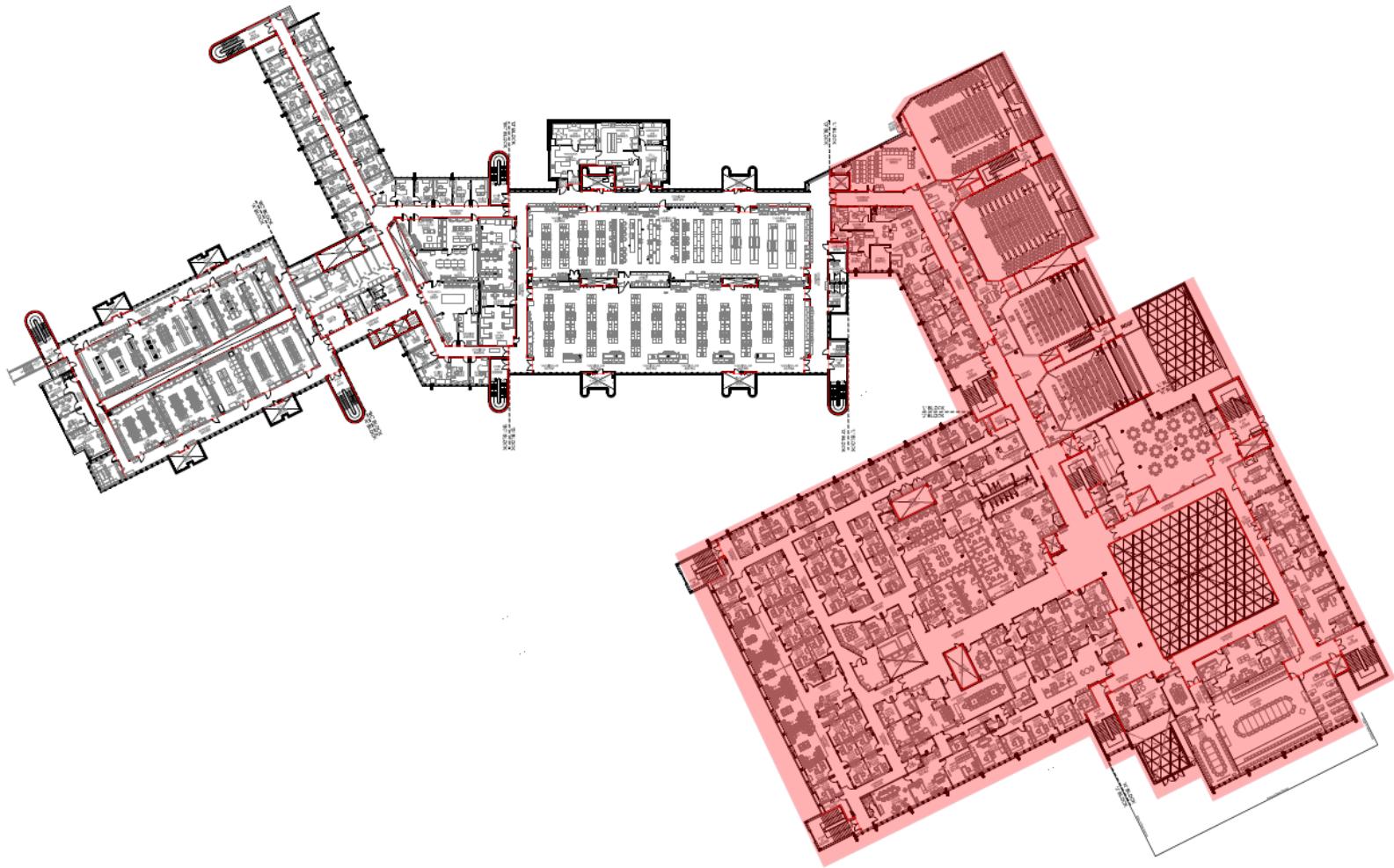




Areas Impacted by shutdown highlighted

1 WILLIAM G. DAVIS BUILDING: LEVEL 2 BLOCKS "A", "BC", "D", "J", "K" & "L"  
A1.2 SCALE = 1 : 400

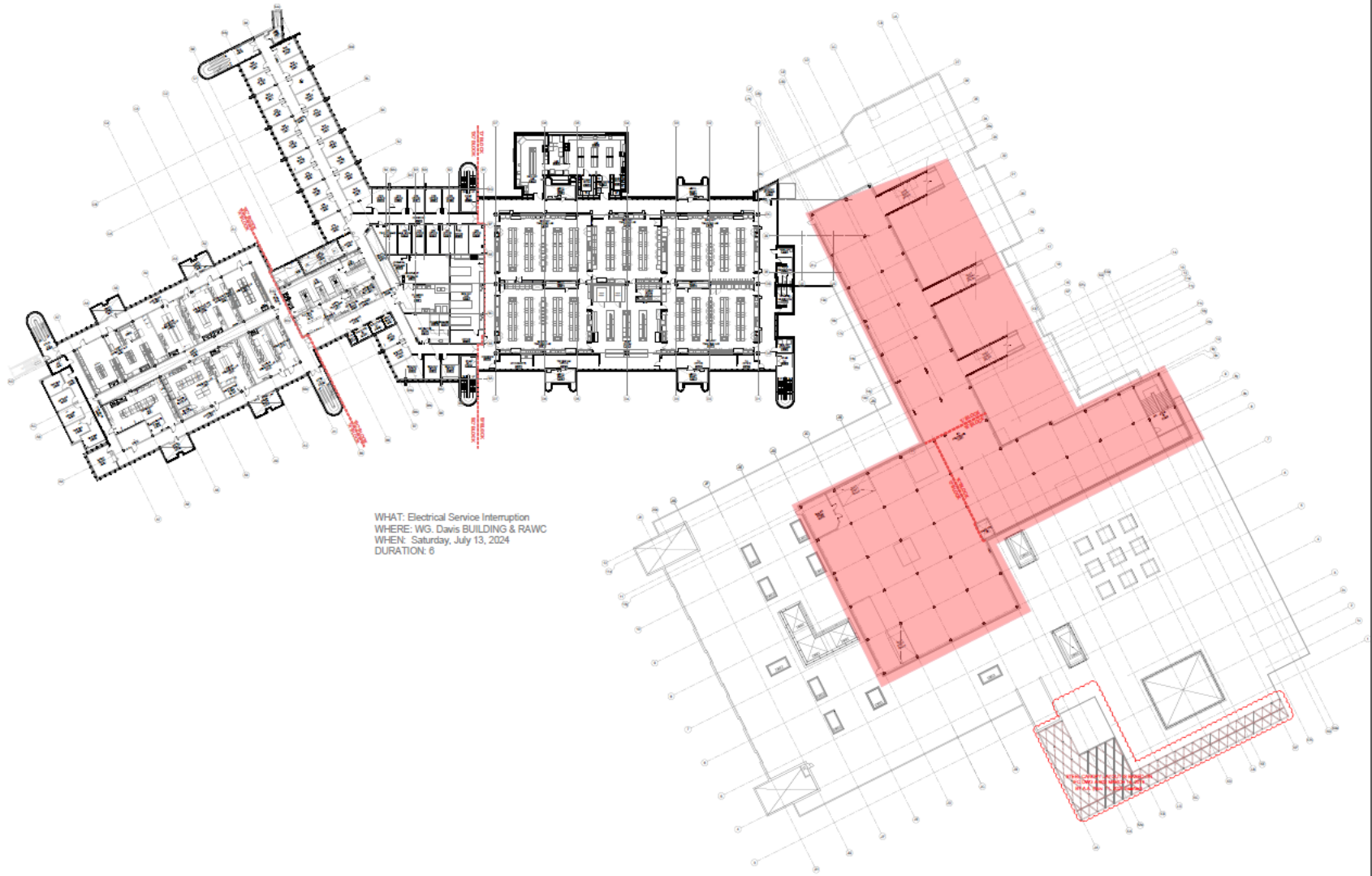
0 5 10 20 30 50 70  
SCALE BAR 1 : 350



Note:  
Furniture Layout as shown on this plan needs to be site verified.

1 WILLIAM G. DAVIS BUILDING: LEVEL 3 BLOCKS "A", "BC", "D", "J", "K" & "L"  
A1.3 SCALE = 1 : 350

0 5 10 20 30 50 70  
SCALE BAR 1 : 350



WHAT: Electrical Service Interruption  
WHERE: W.G. Davis BUILDING & RAWC  
WHEN: Saturday, July 13, 2024  
DURATION: 6

1 WILLIAM G. DAVIS BUILDING: LEVEL 4 BLOCKS "A", "BC", "D", "J", "K" & "L"  
A1.4 SCALE = 1 : 350

