

## About RPRA

- RPRA is the regulator mandated by the Government of Ontario to enforce the province's circular economy laws.
- Established in November 2016 to support the transition to a waste-free Ontario.
- The Authority administers the Resource Recovery and Circular Economy Act, 2016 (RRCEA) and the Waste Diversion Transition Act, 2016 (WDTA), and their associated regulations.

## The Regulation

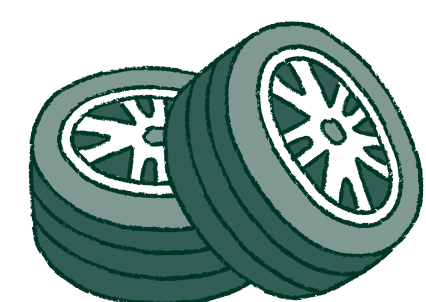
### Waste Diversion Transition Act

The WDTA outlines the legislative framework for winding up and transitioning legacy waste diversion programs.

### Resource Recovery and Circular Economy Act

The RRCEA provides a new producer responsibility regulatory framework for waste diversion and resource recovery where producers are individually accountable and financially responsible for their products and packaging once consumers dispose of them.

### Covered Programs



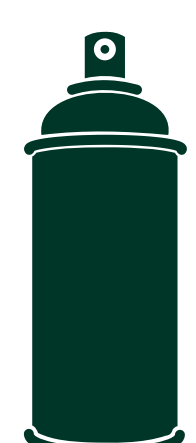
Tires



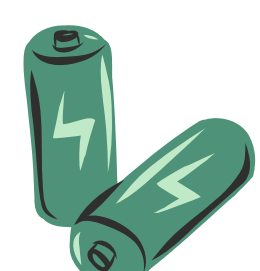
ITT/AV



Lighting



Hazardous and Special Products



Batteries



Blue Box

## Main Projects

### Blue Box Audit Performance Procedure

Supported a project aimed at evaluating material tracking for the Blue Box regulation.

- Conducted jurisdictional scans to review auditing and tracking practices.
- Engaged with stakeholders to map Blue Box material flow.
- Researched certifications like PCR Certification to understand audit requirements.

### Collection Site System Optimization

Assisted in optimizing the collection site tool for improved efficiency.

- Reviewed over 60,000 collection sites to identify duplicates and incorrect information.
- Created a template for bulk collection site uploads.
- Conducted UAT testing for collection activity data uploads.

### Small Producer Inspection

Assisted in the inspection of 25 small producers to ensure accurate reporting and compliance.

- Acted as the primary communicator, handling information requests, follow-ups, and providing clarifications to stakeholders.
- Created and managed a project tracker to monitor stakeholder communications and submissions.

## Industry Exposure

- Gained an understanding of Ontario's circular economy regulations and their implementation, including challenges.
- Visited a material recycling facility and gained insights into recycling processes and practices.
- Attended internal industry seminars by various stakeholders, gaining valuable industry insights.

## Waste Management Challenges

- **Material Recovery:** Ensuring effective recycling is challenging due to complications with tracking materials until they are transformed into new products.
- **Education and Awareness:** Recycling facilities face challenges with contaminated materials and non-recyclable items. Increased investment by producers towards consumer education is needed.
- **Lack of End Markets:** Recycling is limited by the absence of end markets for certain materials. In Ontario, glass is often sent to landfills due to a lack of end markets.
- **Non-recyclable materials:** The packaging industry needs to collaborate with recycling facilities to design recyclable products.