



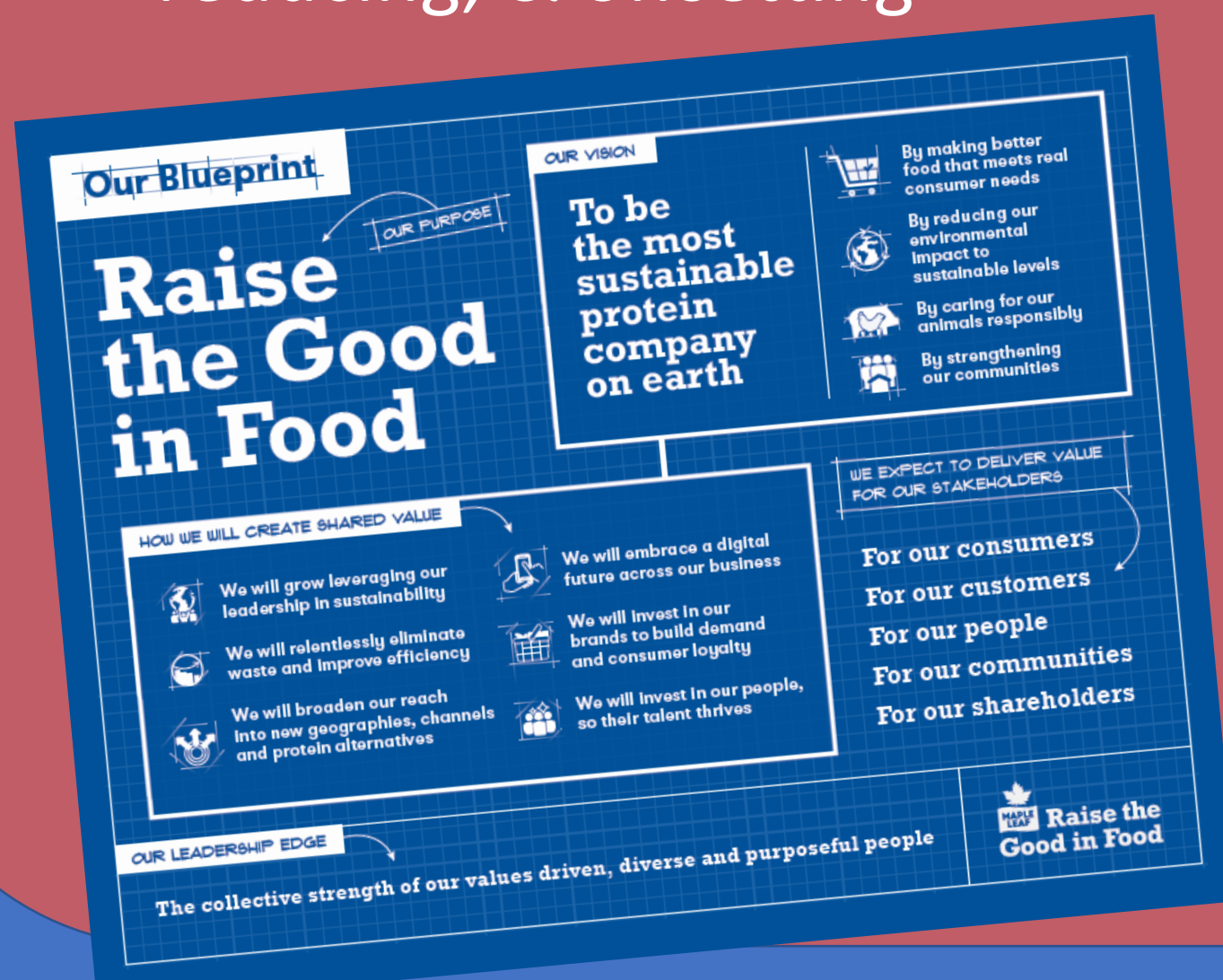
# Vicky Boyd

## Sustainability Intern, Waste Reduction Specialist



### ABOUT MAPLE LEAF FOODS (MLF)

- MLF became the **First Major Carbon Neutral Food Company** in the world in 2019 through a combination of eliminating, reducing, & offsetting
- MLF is a long-time responder to **CDP Climate Change** & first-time responder to **CDP Forests**
- The New Hamburg Hatchery achieved **99% Waste Diversion from Landfill** certified by GreenCircle in 2022
- **Anaerobic Digestion** project is in the works which will address significant amounts of Scopes 1 & 3 emissions



### MEMORABLE MOMENTS



- Hatchery visit where I saw firsthand the high standards for **animal care, food safety, & waste diversion**
- Successful recycling trial for cellulose with high prospects for a program to **divert wieners casings** from landfill
- Investigation of **opportunities at Cappola to reduce food loss waste**; I walked through the step-by-step process of making prosciutto!
- Site tour of the London Poultry processing plant prior to its opening to see industry-leading technology & initiatives which will lead to **Better Food, Better Care, Better Communities, & Better Planet**

### MY PROJECTS

- Coordinated **Solid Waste Audits** & shared results with all 16 Ontario MLF facilities
- Analyzed data & wrote one facility's **Solid Waste Audit Report**
- Coordinated **Plastic Film Recycling Project** & recycled 30,000 kg of difficult-to-recycle materials
- Initiated the **Plastics (numbers 1-7 plus PPE) Recycling Trial** which is in progress to divert all plastics from landfill
- Researched **Deforestation Risk Assessments** to support CDP Disclosures, **Recycling Opportunities** for PPE/masks etc., & **Solid Waste Auditors** for non-Ontario facilities
- Managed the **GreenCircle Recertification** of the New Hamburg Hatchery
- Audited the **Extended Producer Responsibility (Blue Box) Fees Assessment**
- Updated the **Standard Operating Procedures (SOPs)** for annual Solid Waste & Blue Box Audits

### DID YOU KNOW?

It is a Regulatory Requirement in Ontario to annually conduct solid waste audits for manufacturing facilities as per O. Reg. 102/94

MLF is working to extend this practice beyond Ontario to its facilities in other provinces and states

**GREENFIELD NATURAL MEAT CO.**

**FIELD ROAST PLANT-BASED MEAT & CHEESE CO.**

**MAPLE LEAF**

**Mina** Zabeeha by Hand HALAL

**Lightlife** MLF

**SCHNEIDERS** EST. 1890

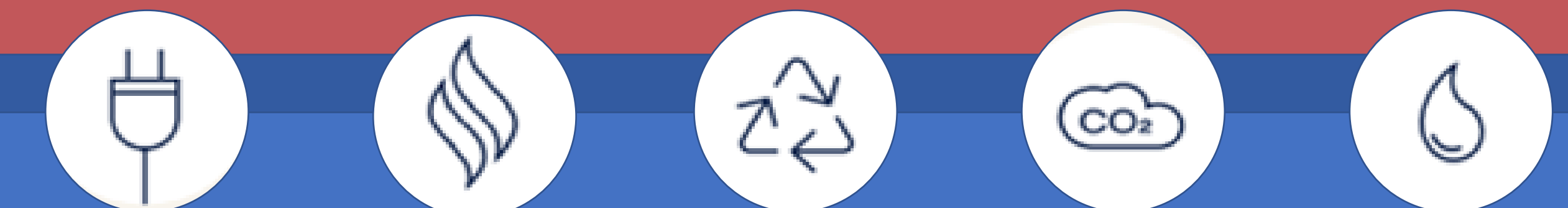
**MLF has so many products! There is a good chance your favourite protein product from the grocery store or restaurant is**



### THE SUSTAINABILITY TEAM

- Has a very high engagement score, 9 points above Glint benchmark, meaning that team members are happy and would recommend working at MLF
- Tasked with achieving science-based targets of reducing absolute Scopes 1 & 2 emissions by 30% and Scope 3 emissions intensity by 30% by 2030 (baseline 2018)

**ENVIRONMENTAL FOOTPRINT INTENSITY:** Energy, Solid Waste, Food Waste, Water, & Emissions per Tonne of Production



### KEY TAKEAWAYS

Each facility has different production processes and thus faces unique challenges. Sustainability plans need to be adapted to each facility

**ONE SIZE DOES NOT FIT ALL**

The Senior Leadership Team is committed to being the Most Sustainable Protein Company on Earth which places sustainability as a priority at every level

**SUSTAINABLE CHANGE STARTS FROM THE TOP**

It can be difficult to recycle materials which have been contaminated by meat/protein or are a mixture of materials (e.g. plastic films with adhesives)

**'RECYCLABLE' IS ONLY RECYCLABLE IF YOU CAN FIND A RECYCLER**

To achieve its goals, the Sustainability Team relies on the actions of many players – finance, procurement, maintenance, facility contacts, third party consultants, etc.

**CROSS-FUNCTIONAL RELATIONSHIPS ARE KEY**

To Raise the Good in Food and create shared value, the business case should address environmental, social, & economic issues

**ALWAYS MAKE THE BUSINESS CASE**

