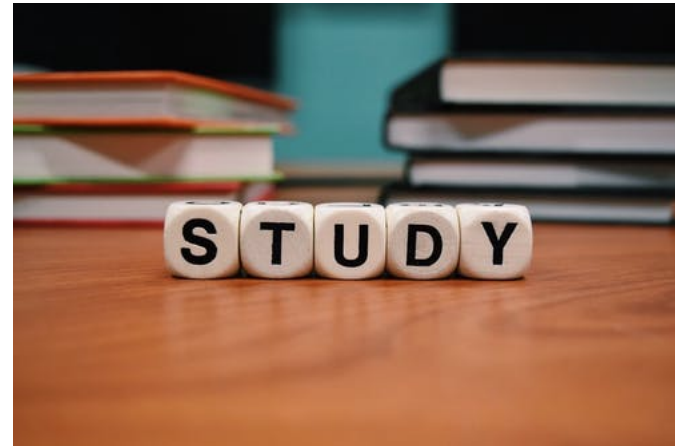


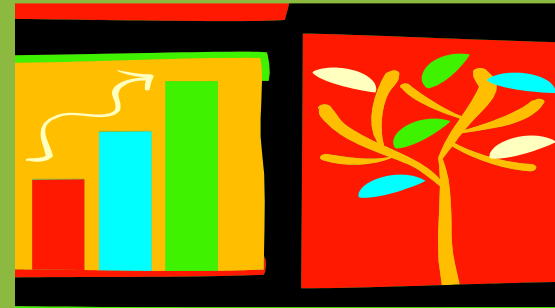
CLASS 2025 (BEGINS SEPTEMBER 2023)

Master of Science in Sustainability Management Program (MScSM) at
University of Toronto Mississauga

Agenda

- What is the MScSM Program?
 - Is MScSM the program for you?
- Course/program structure
- Professional Development
- Are you eligible to apply?
- Application process – how and when
- Financing your graduate education
- Contact us

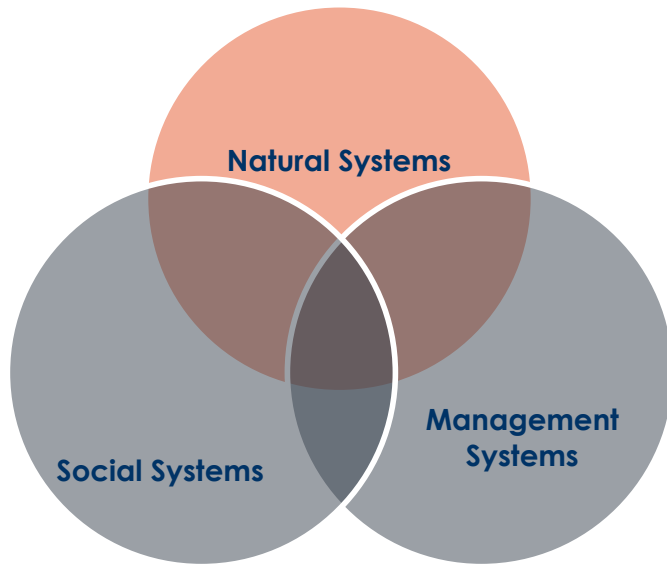




WHAT IS THE MSCSM THE PROGRAM AND IS IT THE PROGRAM FOR YOU?



Is this the program for you?



Are you interested in Sustainability?

All our courses are taught through the lens of sustainability.

Is this program a fit for you and your goals?

We train our graduates to:

- Be innovators
- To integrate knowledge
- To become leaders and make leading contributions and lasting advances in sustainability

Challenging Careers

- Industry marketing/policy analyst
- All levels of government
- Governance for sustainability policy and business development
- Public or business administration in divisions with sustainability functions
- Strategic relations
- NGO
- Consulting
- Impact investing
- Health services
- Banking

MSCSM PROGRAM STRUCTURE

MScSM is one of seven graduate programs in the Institute for Management & Innovation (IMI) at the University of Toronto Mississauga

- 20 months
- 5 semesters, 4 academic and 1 work term
- Work term is in summer between Yr 1 and yr 2
- 11 core courses and 5 electives
- Through electives, students choose Management or Science concentration
- Full-time, Monday to Thursday, 9am to 5pm (with some evening electives and occasional Friday mornings)



Year 1 and Year 2 Schedule

- Program Path

- Year 1 Fall
 - SSM1010Y Principles of Sustainability
 - SSM1020 Decision Making for Sustainability Management
 - SSM1050 Ecosystem Science
 - SSM1060 Managing Sustainable Organizations
- Year 1 Winter
 - SSM1030 Environmental Science
 - SSM1040 Managerial Economics
 - SSM1070 Sustainability Law and Policy
 - SSM1080 Strategies for Sustainability Management
 - SSM1120 Social Dimensions of Sustainability
- Year 1 Summer
 - SSM1110 Sustainability Internship
- Year 2 Fall
 - SSM1100Y Research Paper
 - PLUS 3 Electives
- Year 2 Winter
 - SSM1100Y Research Paper (con't)
 - SSM1090 Capstone Course
 - PLUS 2 Electives



Plus weekly
Professional
Development
Workshops



PROFESSIONAL DEVELOPMENT PROGRAMMING

- MScSM is a course-based **Professional** Masters' Program
- Industry engagement is an important component
- Range of professional development sessions throughout the program
 - Communication, Conflict Resolution & Negotiation
 - Presentation Skills
 - Business Writing
 - Case Interviewing / Informational Interviewing / How to network
 - Application documents for jobs: resume, cover letters
- Events such as
 - Careers Day
 - Career Panels
 - Career Conference Days
 - Speed Networking



PROGRAM EXTRAS – ELECTIVES/EXCHANGE/COLLABORATION

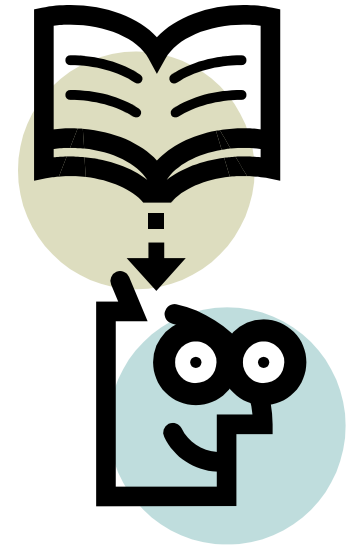
- Electives (minimally 5)
 - Mostly in Year 2
 - Choose Management or Science concentration
 - Chance to customize your learning / fill your knowledge gaps
- Exchange Program
 - Optional, Fall Year 2
 - University of Geneva, Lund University, University of Copenhagen
 - Courses taken at these universities are your electives
- Collaborative Program with School of the Environment
 - Take two ENV electives



ARE YOU ELIGIBLE TO APPLY?

ARE YOU ELIGIBLE TO APPLY?

- Students come from many disciplines:
 - Life science (biology, chemistry, etc)
 - Natural science (earth science, physics, astronomy, etc)
 - Management science (commerce, accounting, etc)
 - Social science (history, law, psychology, arts, etc)
 - Environmental and natural resource (geography, etc)
 - Engineering (civil, mechanical, technology, etc)
 - Architecture (visual arts, design)
 - Urban design/planning
 - Health sciences (health administration, etc)



ADMISSION CRITERIA

- 4-year undergraduate bachelor degree from an accredited university
- GPA of at least mid B (3.0/4.0) in the last five full or ten half SENIOR (3rd and 4th year) credit courses
- Successful completion of an undergraduate statistics or calculus course with a grade of at least B-
- Resume 1-2 pages
- Letter of Intent – responding to the 5 questions available on our website and in the online application system
- Two academic and/or professional reference letters
- Work experience? Not required however . . .

CLASS PROFILE

MScSM Program Class 2023 (*which began September 2021*)

Class size – 41 (*usual class size is 35-40 students*)

Age range 22-37 years old, average age is 26 (*age range of past five years is 21 – 45 years old*)

GPA range – 3.0 to 4.0

Average work experience – 2 years

Undergrad by major: Biology, chemistry, environmental studies, management (accounting and finance), sociology and engineering

32 Domestic students from all across Canada; 9 international students from 6 countries including Mexico, UK, USA, India, PR China, and Vietnam

ADMISSION PROCESS

ADMISSION PROCESS

- Apply through online SGS application system
- System opened October 1, 2022 and closes March 15, 2023
- We only review and consider completed applications, i
- *Qualified* applicants will be invited to an online interview
- Admission decisions are extended 3-5 business days after interview
- Official offers are extended via email within 7-10 days from admission decision
- APPLICATION DEADLINE IS MARCH 15TH 2023



FINANCING YOUR MSCSM GRADUATE DEGREE

- **EXPENSES** (for September 2022 entrants - 2023 fees not known yet)
- **TUITION FEES, ANNUAL:**
 - Domestic - \$16,880 plus University incidental fees of approximately \$2,300
 - International - \$34,410 plus University incidental fees of approximately \$2,300, plus Mandatory Health Insurance for International Students: Approximately \$760 per year
- Living expenses, including Housing, food, transportation, textbooks, etc:
 - Approximately \$2,000 per month (as per UTM Housing and Residency)
- **POTENTIAL FUNDING** (each year)
 - Internship income
 - TA / RA positions at UofT
 - IMI Professional Masters Student Aid (Domestic students only)
 - Government & Bank student loans (Domestic students only)

CONTACTING MSCSM

Contact Us

- Visit our website (full program and admission information)
- Attend online webinars (schedule on our website)
- Contact our Program
 - mscsm.utm@utoronto.ca
 - 905-569-5803
- Contact current students and alumni via their LinkedIn profile, available on our website under Students and Alumni Section

Questions?

