

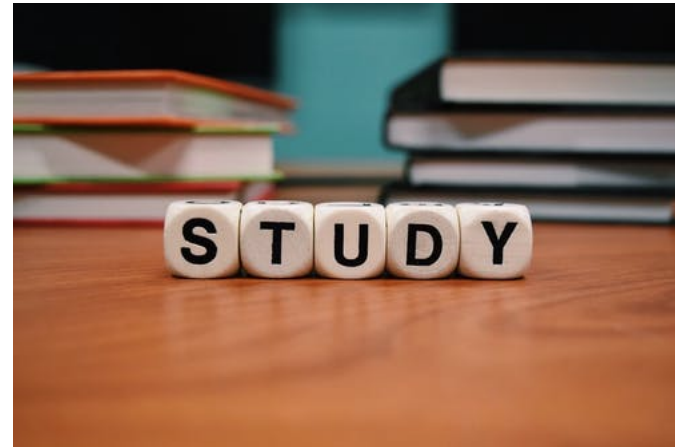
# CLASS 2023 (BEGINS SEPTEMBER 2021)

---

Master of Science in Sustainability Management Program (MScSM) at  
University of Toronto Mississauga

# Agenda

- What is the MScSM Program?
  - Is MScSM the program for you?
- Course schedule for program
- Professional Development
- Are you eligible to apply?
- Application process – how and when
- Financing your graduate education
- Contact us



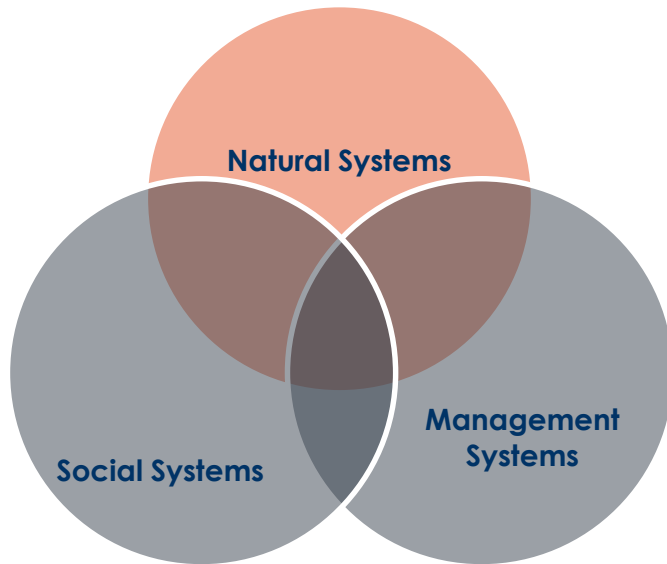


# WHAT IS THE MSCSM THE PROGRAM AND IS IT THE PROGRAM FOR YOU?

---



# Is this the program for you?



***Are you interested in Sustainability?***

***All our courses are taught through the lens of sustainability.***

***Is this program a fit for you and your goals?***

We train our graduates to:

- Be innovators
- To integrate knowledge
- To become leaders and make leading contributions and lasting advances in sustainability

# Challenging Careers

- Industry marketing/policy analyst
- All levels of government
- Governance for sustainability policy and business development
- Public or business administration in divisions with sustainability functions
- Strategic relations
- NGO
- Consulting
- Impact investing
- Health services
- Banking

# MScSM PROGRAM STRUCTURE

MScSM is one of seven graduate programs in the Institute for Management & Innovation (IMI) at the University of Toronto Mississauga

- 20 months
- 5 semesters, 4 academic and 1 work term
- Work term is in summer between Yr 1 and yr 2
- 11 core courses and 5 electives
- Through electives, students choose Management or Science concentration
- Full-time, Monday to Thursday, 9am to 5pm (with some evening electives and occasional Friday mornings)



# Year 1 and Year 2 Schedule

- Program Path

- Year 1 Fall

- SSM1010Y Principles of Sustainability
- SSM1020 Decision Making for Sustainability Management
- SSM1050 Ecosystem Science
- SSM1060 Managing Sustainable Organizations

- Year 1 Winter

- SSM1030 Environmental Science
- SSM1040 Managerial Economics
- SSM1070 Sustainability Law and Policy
- SSM1080 Strategies for Sustainability Management
- SSM1120 Social Dimensions of Sustainability

- Year 1 Summer

- SSM1110 Sustainability Internship

- Year 2 Fall

- SSM1100Y Research Paper
- PLUS 3 Electives

- Year 2 Winter

- SSM1100Y Research Paper (con't)
- SSM1090 Capstone Course
- PLUS 2 Electives



Plus weekly  
Professional  
Development  
Workshops



# PROFESSIONAL DEVELOPMENT PROGRAMMING

- MScSM is a course-based **Professional** Masters' Program
- Industry engagement is an important component
- Range of professional development sessions throughout the program
  - Communication, Conflict Resolution & Negotiation
  - Presentation Skills
  - Business Writing
  - Case Interviewing / Informational Interviewing / How to network
  - Application documents for jobs: resume, cover letters
- Events such as
  - Careers Day
  - Career Panels
  - Career Conference Days
  - Speed Networking



# PROGRAM EXTRAS – ELECTIVES/EXCHANGE/COLLABORATION

- Electives (minimally 5)
  - Mostly in Year 2
  - Choose Management or Science concentration
  - Chance to customize your learning / fill your knowledge gaps
- Exchange Program
  - Optional, Fall Year 2
  - University of Geneva, Lund University, University of Copenhagen
  - Courses taken at these universities are your electives
- Collaborative Program with School of the Environment
  - Take two ENV electives

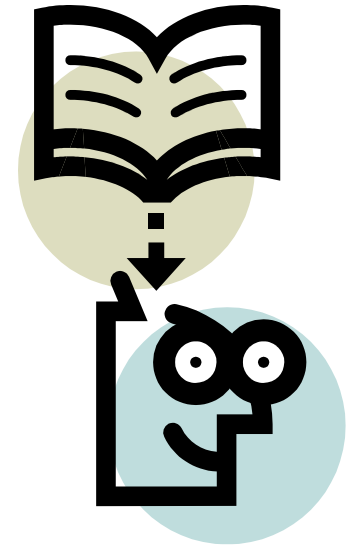


# ARE YOU ELIGIBLE TO APPLY?

---

# ARE YOU ELIGIBLE TO APPLY?

- Students come from many disciplines:
  - Life science (biology, chemistry, etc)
  - Natural science (earth science, physics, astronomy, etc)
  - Management science (commerce, accounting, etc)
  - Social science (history, law, psychology, arts, etc)
  - Environmental and natural resource (geography, etc)
  - Engineering (civil, mechanical, technology, etc)
  - Architecture (visual arts, design)
  - Urban design/planning
  - Health sciences (health administration, etc)



# ADMISSION CRITERIA

- 4-year undergraduate bachelor degree from an accredited university
- GPA of at least mid B (3.0/4.0) in the last five full or ten half SENIOR credit courses
- Successful completion of an undergraduate statistics or calculus course with a grade of at least B-
- Resume 1-2 pages
- Letter of Intent – responding to the 5 questions available on our website and in the online application system
- Two academic and/or professional reference letters
- Work experience? Not required however . . .

# CLASS PROFILE

MScSM Program Class 2022 (*which began September 2020*)

Class size – 32 (*usually class size is 35-40 students*)

Age range 22-35 years old, average age is 26 (*age range of past five years is 21 – 45 years old*)

GPA range – 3.0 to 4.0

Average work experience – 2 years

Undergrad by major: Biology, chemistry, environmental studies, management (accounting and finance), sociology and engineering

25 Domestic students from all across Canada; 7 international students from 6 countries including Colombia, Costa Rica, India, Nigeria, Pakistan and UK

# ADMISSION PROCESS

---

# ADMISSION PROCESS

- Apply through online SGS application system
- System opened October 1, 2020 and closes March 15, 2021
- We only review and consider completed applications
- *Qualified* applicants will be invited to an online interview
- Admission decisions are extended 3-5 business days after interview
- Official offers are extended via email within 7-10 days from admission decision
- APPLICATION DEADLINE IS MARCH 15<sup>TH</sup> 2021



# FINANCING YOUR MSCSM GRADUATE DEGREE

- **EXPENSES** (for September 2020 entrants)
- TUITION FEES, ANNUAL:
  - Domestic - \$16,880 plus University incidental fees of approximately \$2,000
  - International - \$32,450 plus University incidental fees of approximately \$2,000
- Mandatory Health Insurance for International Students:
  - Approximately \$700 per year
- Living expenses, including Housing:
  - Approximately \$1,800 per month (as per UTM Housing and Residency)
- **POTENTIAL FUNDING** (each year)
  - Internship income
  - TA / RA positions at UofT
  - IMI Professional Masters Student Aid (Domestic students only)
  - Government & Bank student loans (Domestic students only)





# CONTACTING MSCSM

---

# Contact Us

- Visit our website (full program and admission information)
- Attend online webinars (schedule on our website)
- Contact our Program Coordinator
  - Rose Mary Craig
  - [rosemary.craig@utoronto.ca](mailto:rosemary.craig@utoronto.ca)
  - 905-569-5803
- Contact current students and alumni via their LinkedIn, available on our website under Students and Alumni Section

# Questions?

