

CLASS 2023 (BEGINS SEPTEMBER 2021)

Master of Science in Sustainability Management Program (MScSM) at
University of Toronto Mississauga

Agenda

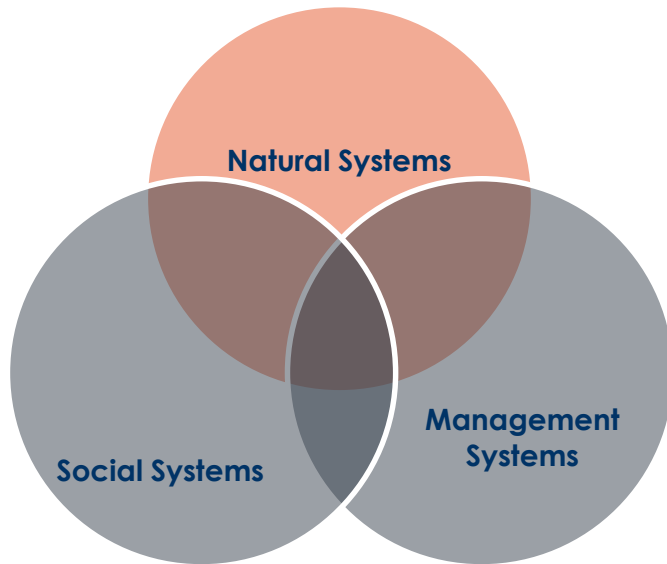
- What is the MScSM Program?
 - Is MScSM the program for you?
- Course schedule for program
- Professional Development
- Are you eligible to apply?
- Application process – how and when
- Financing your graduate education
- Contact us



WHAT IS THE MSCSM THE PROGRAM AND IS IT THE PROGRAM FOR YOU?



Is this the program for you?



Are you interested in Sustainability?

All our courses are taught through the lens of sustainability.

Is this program a fit for you and your goals?

We train our graduates to:

- Be innovators
- To integrate knowledge
- To become leaders and make leading contributions and lasting advances in sustainability

Challenging Careers

- Industry marketing/policy analyst
- All levels of government
- Governance for sustainability policy and business development
- Public or business administration in divisions with sustainability functions
- Strategic relations
- NGO
- Consulting
- Impact investing

MSCSM PROGRAM STRUCTURE

MScSM is one of seven graduate programs in the Institute for Management & Innovation (IMI) at the University of Toronto Mississauga



- 20 months
- 5 terms, 4 academic and 1 work term
- Work term is in summer between Yr 1 and yr 2
- 11 core courses and 5 electives
- Through electives, students choose Management or Science concentration
- Full-time, Monday to Thursday, 9am to 5pm (with some evening electives and occasional Friday mornings)

11 Required courses

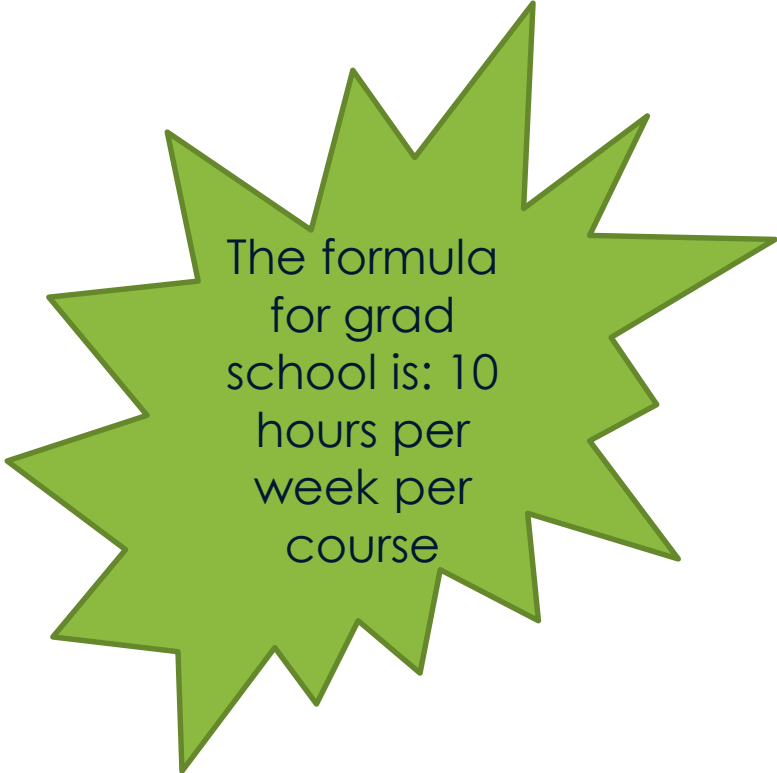
- SSM1010Y Principles of Sustainability Management
- SSM1020H Decision Making for Sustainability Management
- SSM1030H Environmental Science
- SSM1040H Managerial Economics for Sustainability Management
- SSM1050H Ecosystem Science
- SSM1060H Managing Sustainable Organizations
- SSM1070H Sustainability Law and Policy
- SSM1080H Strategies for Sustainability Mgmt
- SSM1090H Capstone Course – The Sustainable Enterprise
- SSM1100Y Research Paper
- SSM1110H Sustainability Management Internship
- SSM1120H Social Dimensions in Sustainability



Year 1 and Year 2 Schedule

- Program Path

- Year 1 Fall
 - SSM1010Y Principles of Sustainability
 - SSM1020 Decision Making for Sustainability Management
 - SSM1050 Ecosystem Science
 - SSM1060 Managing Sustainable Organizations
- Year 1 Winter
 - SSM1030 Environmental Science
 - SSM1040 Managerial Economics
 - SSM1070 Sustainability Law and Policy
 - SSM1080 Strategies for Sustainability Management
 - SSM1120 Social Dimensions of Sustainability
- Year 1 Summer
 - SSM1110 Sustainability Internship
- Year 2 Fall
 - SSM1100Y Research Paper
 - PLUS 1.5 FCE Electives
- Year 2 Winter
 - SSM1100Y Research Paper (con't)
 - SSM1090 Capstone Course
 - PLUS 1.0 FCE Electives



The formula
for grad
school is: 10
hours per
week per
course



PROFESSIONAL DEVELOPMENT PROGRAMMING

- MScSM is a course-based Professional Masters' Program
- Industry engagement is an important component
- Range of professional development sessions throughout the program
 - Communication, Conflict & Negotiation
 - Presentation Skills
 - Business Writing
 - Case Interviewing / Informational Interviewing
 - Application documents for jobs: resume, cover letters
- Events such as
 - Careers Day
 - Career Panels
 - Career Conference Days
 - Speed Networking

PROGRAM EXTRAS – ELECTIVES/EXCHANGE/COLLABORATION

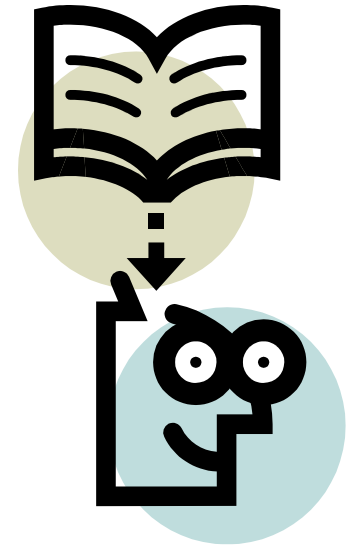
- Electives (5)
 - Mostly in Year 2
 - Choose Management or Science concentration
 - Chance to customize your learning / fill your knowledge gaps
- Exchange Program
 - Optional, Fall Year 2
 - University of Geneva, Lund University, University of Copenhagen
 - Courses taken at these universities are your electives
- Collaborative Program with School of the Environment
 - Take two ENV electives



ARE YOU ELIGIBLE TO APPLY?

ARE YOU ELIGIBLE TO APPLY?

- Students come from many disciplines:
 - Life science (biology, chemistry, etc)
 - Natural science (earth science, physics, astronomy, etc)
 - Management science (commerce, accounting, etc)
 - Social science (history, law, psychology, arts, etc)
 - Environmental and natural resource (geography, etc)
 - Engineering (civil, mechanical, technology, etc)
 - Architecture (visual arts)
 - Urban design/planning



CLASS PROFILE

MScSM Program Class 2022 (which began September 2020)

Class size – 32

Age range 22-35 years old, average age is 26

GPA range – 3.0 to 4.0

Average work experience – 2 years

Undergrad by major: Biology, chemistry, environmental studies, management (accounting and finance), sociology and engineering

25 Domestic students from all across Canada; 7 international students from 6 countries including Colombia, Costa Rica, India, Nigeria, Pakistan and UK



ADMISSION CRITERIA

- 4-year undergraduate bachelor degree from an accredited university
- GPA of at least mid B (3.0/4.0) in the last five full or ten half SENIOR credit courses
- Successful completion of an undergraduate statistics or calculus course with a grade of at least B-
- Resume 1-2 pages
- Letter of Intent – responding to the 5 questions available on our website and in the online application system
- Two academic and/or professional reference letters
- Work experience? Not required however . . .

ADMISSION PROCESS

ADMISSION PROCESS

- Apply through online SGS application system
- System opens October 1, 2020 and closes March 15, 2021
- We only review and consider completed applications
- *Qualified* applicants will be invited to an online interview
- Admission decisions are extended 3-5 business days after interview
- Official offers are extended via email within 7-10 days from admission decision
- APPLICATION DEADLINE IS MARCH 15TH 2021



FINANCING YOUR MSCSM GRADUATE DEGREE

- **EXPENSES** (for September 2020 entrants)
- **TUITION FEES, ANNUAL:**
 - Domestic - \$16,880 plus University incidental fees of approximately \$2,000
 - International – 432,450 plus University incidental fees of approximately \$2,000
- **Mandatory Health Insurance for International Students:**
 - Approximately \$700 per year
- **Living expenses, including Housing:**
 - Approximately \$1,800 per month (as per UTM Housing and Residency)
- **POTENTIAL FUNDING** (each year)
 - Internship income
 - TA / RA positions are UofT
 - IMI Professional Masters Student Aid (Domestic students only)
 - Government & Bank student loans (Domestic students only)



CONTACTING MSCSM

Contact Us

- Visit our website (full program and admission information)
- Attend online webinars (schedule on our website)
- Contact our Program Coordinator
 - Rose Mary Craig
 - Rosemary.craig@utoronto.ca
 - 905-569-5803
- Contact current students and alumni via their LinkedIn, available on our website under Students and Alumni Section

Questions?

