

# OPERATING INSTRUCTIONS

## 7 DAY HEAVY-DUTY DUAL OUTLET TIMER

FD60-U6

### PRODUCT



### APPLICATIONS

- Lighting
- Heating systems
- Cooling systems
- Indoor sprinklers
- Humidifiers
- Nebulizers
- Aquariums
- Ventilators

### WARNING

- Electrical shock hazard
- Use a grounded outlet
- Risk of injury or death
- Follow local electrical codes
- Risk of fire
- For indoor use only

### A. INITIAL SETUP

#### 1. Remove sticker

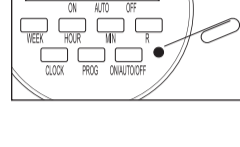
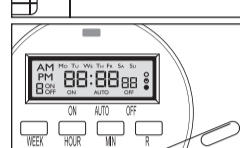
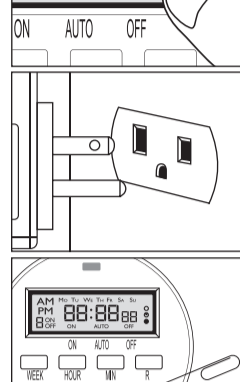
Locate the tab at the top right of the sticker and pull to remove sticker from face of screen.

#### 2. Charge the internal battery

If the screen is blank, plug the timer into any outlet for 30 minutes to charge the internal battery.

#### 3. Reset the timer

Press the "RESET" button with the tip of a small non-metallic insulated tool, such as a pencil or toothpick. LCD display will appear like this icon.



#### 4. Unplug and program timer

Charging the battery allows the programming and setup of timer to occur from the comfort of your chair!

### B. SET UP CURRENT DAY & TIME

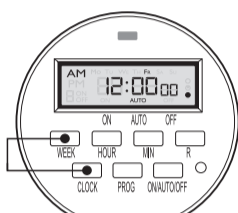


Fig 01

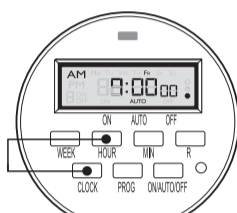


Fig 02

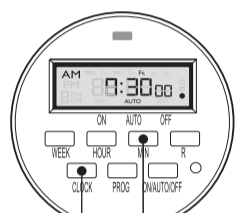


Fig 03

**Example: if it is 7:30am Friday, please follow below steps to set the current day and time.**

1. Press and hold the "CLOCK" button, then press the "WEEK" button until "Fr" displays on top of the screen. (Fig 01)
2. Press and hold the "CLOCK" button, then press the "HOUR" button until 7:00am displays on the screen. (Fig 02)  
Note: please pay attention to AM/PM.
3. Press and hold "CLOCK" button, and press "MIN" button until 7:30am displays on the screen. (Fig 03)

### C. SET PROGRAM

1. Press the "PROG" button to enter the program setting, you will see the picture. (Fig 04)

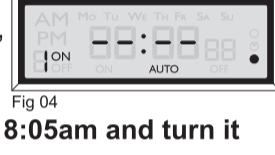


Fig 04

**Example: if you want to turn on a device every day at 8:05am and turn it off at 9:00pm, please follow below steps.**

2. Press the "WEEK" button to enter the program setting, you will see all the days of the week on the top and "1 ON" to the left of the display. (Fig 05)

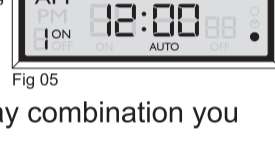


Fig 05

Note: Press "WEEK" multiple times until you get the day combination you want.

Day combination options:

- MO to SU
- Individual day: MO,TU,WE,TH,FR,SA,SU
- MO to FR
- SA, SU
- MO to SA
- MO, WE, FR
- TU, TH, SA
- MO, TU, WE
- TH, FR, SA

3. Press the "HOUR" button until 8:00am displays on the screen. (Fig 06)



Fig 06

4. Press the "MIN" button until 8:05am displays on the screen. (Fig 07)



Fig 07

5. Press the "PROG" button once to set program "1 OFF" you will see the picture. (Fig 08)



Fig 08

6. Repeat steps 2 to 4 to set program "1 OFF". (Fig 09)



Fig 09

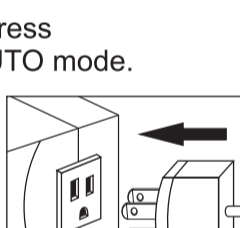
7. If you want to set the second ON/OFF program, press "PROG" button again, you can repeat steps 2 to 6 to set program, or press the "CLOCK" to return the current time.  
Press "R" at any point to cancel the current setting.  
Press "R" again will take you back to the previous option.

You can set up to 8 different ON and OFF programs for your timer. To do so, just repeat steps 1 to 6 for program "2 ON" "2 OFF" "3 ON" etc. . .

8. If you want to make the set of programs valid, please press "ON/AUTO/OFF" button to make sure the timer is in AUTO mode.

#### Attach up to TWO DEVICES to the timer

Plug the devices into the outlets on either side of the timer.



### D. MANUAL OVERRIDE

Pressing ON/AUTO/OFF button can manually turn on and off the timer.

- **OFF:** Press ON/AUTO/OFF button until screen shows OFF. In this status, timer always has no output. The red LED output indicator on the top is off. (Fig10)

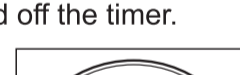


Fig 10

- **ON:** Press ON/AUTO/OFF button until screen shows ON. In this status, timer always has output. The red LED output indicator on the top is on. (Fig11)



Fig 11

Please set timer to AUTO status if you want to turn on and off automatically based on Programs you have set.

There are two AUTO status:

- **AUTO ON:** Press ON/AUTO/OFF button to the ON first, then press to the AUTO. It is ON status of the timer, top red LED indicator is ON, the timer will run the programs as previously set. (Fig12)



Fig 12

- **AUTO OFF:** Press ON/AUTO/OFF button to the OFF first, then press to the AUTO. It is OFF status of the timer, top red LED indicator is OFF, then the timer will run the programs as previously set. (Fig13)



Fig 13

### E. SET RANDOM FOR VACATION SECURITY

Pressing the "WEEK" and "HOUR" buttons simultaneously will activate security mode. "O" is to the right side of the display.

When the timer is working in Auto mode and the **random function** is on, the previously programmed ON and OFF times will be separately postponed by 2-32 minutes. (Fig 14)

Press the "WEEK" and "HOUR" buttons again to turn off the Random function.

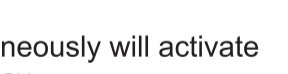


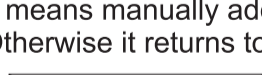
Fig 14

### F. DST - DAYLIGHT SAVING TIME FUNCTION

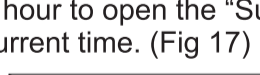
Press **HOUR & MIN** simultaneously to activate or deactivate **DST**

Note: A small clock symbol "⌚" will appear on the far right of the LCD screen when DST is active. (Fig 16)

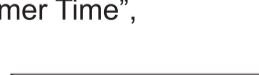
It means manually add 1hour to open the "Summer Time", Otherwise it returns to current time. (Fig 17)



(Fig 15) DST OFF



(Fig 16) DST ON



(Fig 17) DST OFF

### G. TROUBLESHOOTING

#### Timer does not turn on or off.

- Make sure AM and PM are correct on the current time and in the program settings.
- Timer program should be on AUTO setting.
- Make certain that both an ON and OFF time have been specified.
- If any number is not clear or blank on the screen, please plug the timer into any outlet for 30 minutes to charge the internal battery, then press the Reset button.
- The 2 grounded outlets are controlled by the same programs, they can not be set by different programs.
- If the timer can not Turn ON or Turn OFF on time, please check if the Random function is in deactive status.
- If the timer always ON or always OFF, please check if the program is in Auto mode.

### H. TECHNICAL DATA

**Rated Voltage:** 115VAC, 60Hz

**Max.Load:** 15A, 1725W

Customer Service Assistance: 1-909-592-1881

Email: Support@centurytimer.com

Business Hours of Operation: 9AM to 5PM Pacific time, Monday to Friday

Manufactured and Distributed by: Century Products Inc.

www.centurytimer.com