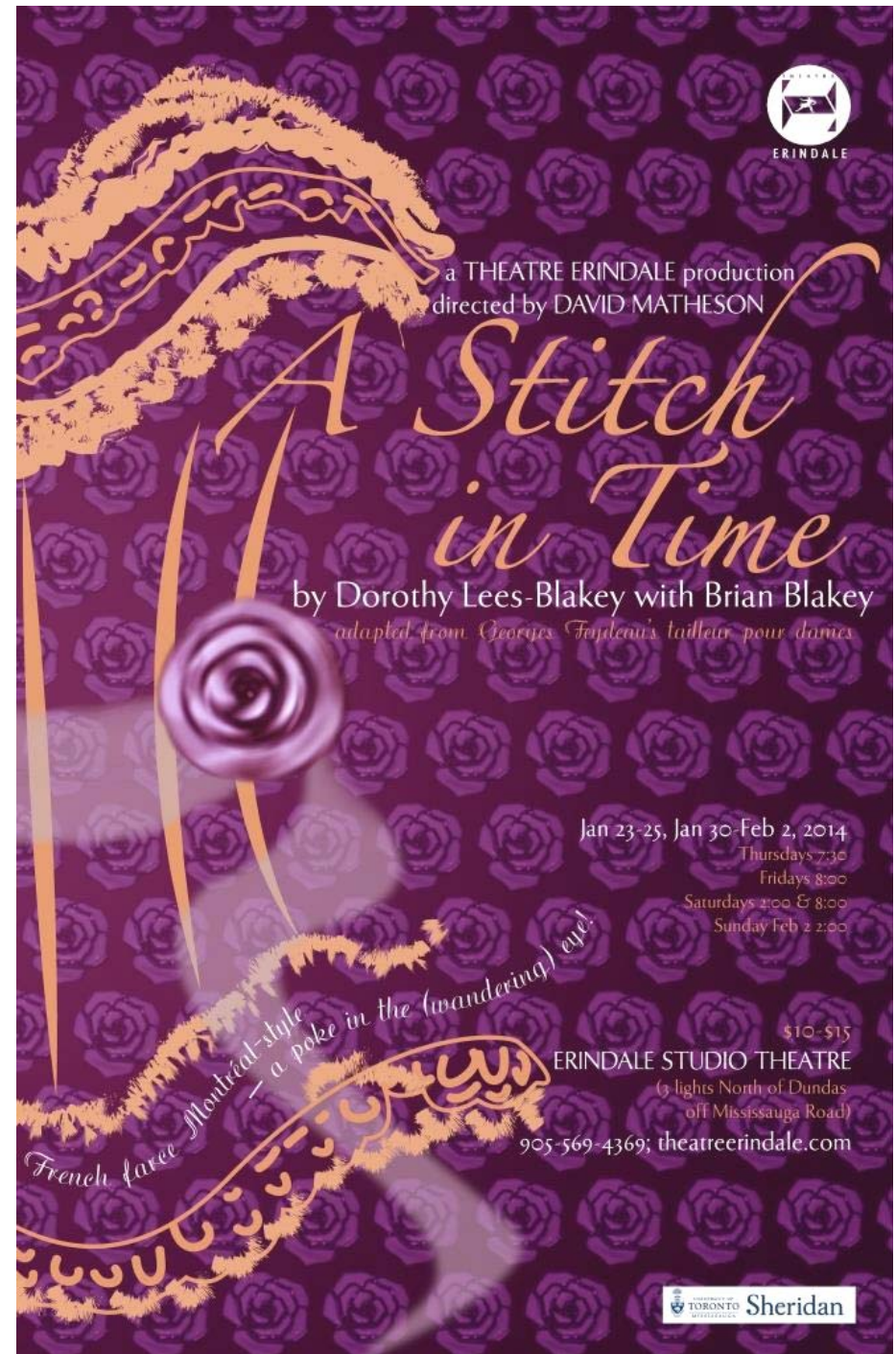


You'll Miss Lots of Fun When You're Married (1890)

Words by Edward M. Taber

Music by John Philip Sousa, 1854-1932

1. Matrimonial life is productive of bliss,
As any sane man will admit.
And he who don't seek it is surely remiss,
And has neither wisdom nor wit.
For when a man's single, he'll find life is bleak.
A desert that's barren and arid,
And I would advise him a partner to seek
[Spoken: Still]
You'll miss lots of fun when you're married.
2. Now what could be sweeter and better in life
Than avoiding its weary turmoil,
And be welcomed at home by your own little wife,
When you've finished your diurnal toil.
Of course you must give up you bachelor ways.
And the style that you always have carried,
And think with remorse on your old reckless ways.
[Spoken: Nevertheless]
You'll miss lots of fun when you're married.
3. O why should a man seek to fresco the town,
Or stay out all night and play draw,
When he at his home might sit peacefully down,
And converse with his mother-in-law.
For love and contentment are better by far
Than a conscience by wickedness harried,
And unhappy, therefore, all bachelors are,
[Spoken: Notwithstanding which, however,]
You'll miss lots of fun when you're married.
4. Now please do not think for a moment, my friends,
This is a satirical song,
Of that in its sentiments anything tends
To views that are worldly or wrong.
For when you are wed you so happy will be
You will wish you had not so long tarried,
And then, I suppose you will villify me,
[Spoken: But, all the same,]
You'll miss lots of fun when you're married.



This program is available in larger print.

From the Dean and Vice Principal Academic, University of Toronto Mississauga ...

I am delighted to welcome you to the 22nd season of Theatre Erindale, with a focus on the theme of "Uppity Women!" My congratulations to the students, staff and faculty of the UTM-Sheridan Theatre and Drama Studies Program for providing superlative theatrical productions in an intimate setting that lets us observe the finest nuances of the dramatic art of our performers. Our program combines professional dramatic training with a broad academic perspective, and attracts extremely talented students across Canada and internationally.

As a member of the audience tonight, whether you are a Theatre Erindale Patron or a single ticket purchaser, you are in for a real treat. I know that you'll find this evening at the theatre a testament to the power of plays to stimulate us intellectually and move us emotionally, often generating new insights into life's possibilities. Whether the play you are attending is a reminder of grim events in history, or focuses on the more ridiculous of our interactions with one another, you will be exposed to the power that strong women have to question, challenge and shape the world around them.

– Amy Mullin

From the Artistic Director ...

"Uppity Women?" Yikes! Why title a season with a laughable expression for those of the female persuasion who speak out, who break the rules, who refuse to spend their lives saying 'yes sir' and 'no sir'? Well, because this season is especially about them, and even *by* them.

And they're not all saints: among those 'uppity women' are both heroes and villains. From the girls whose hysteria turns Salem upside down, to a feminist crusader and icon; from the Canadian adaptor of a French farce, to a comic novelist whose plays were concealed for 200 years, to the first woman ever to earn her living with her pen – we have them all on board this season, and we know you're going to find them thought-provoking, moving, inspiring and hilarious!

Today we bring you our very first venture into French farce, with a play originated by the great master farceur Georges Feydeau, then translated and adapted to Montreal first by Brian Blakey and then by Dorothy Lees-Blakey. To keep this hysterical bit of naughtiness on the rails, it's a particular pleasure to welcome back Sheridan's David Matheson in his second venture for Theatre Erindale following last year's sellout production of *Macbeth*, and stage manager Barbara McLean Wright after last year's magical *Midsummer Night's Dream*.

	<i>Pride and Prejudice</i> <i>Jane Eyre</i>	Jane Austen / Christina Calvit Charlotte Brontë / Johanson	Patrick Young Ralph Small
2004/2005	<i>The Play's the Thing</i> <i>Alarum Within: theatre poems</i> <i>Unity (1918)</i> <i>Women Beware Women</i> <i>Love's Labour's Lost</i>	Skinner, Durang, Frayn Kimmy Beach / Company Kevin Kerr Thomas Middleton William Shakespeare	Paul Brown Ralph Small Patrick Young Sue Miner Heinar Piller
2005/2006	<i>Picnic at Hanging Rock</i> <i>The Immigrant Years</i> <i>Thirteen Hands</i> <i>Constant Players & The Dispute</i> <i>The Country Wife</i>	Lady Lindsay / Shamas Barry Broadfoot / Company Carol Shields / Chris Dawes Marivaux / Watson & Lester William Wycherley	Laurence Follows Alex Fallis Ron Cameron-Lewis Mimi Mekler Patrick Young
2006/2007	<i>Radium Girls</i> <i>Canadian Kings of Repertoire</i> <i>Waiting for the Parade</i> <i>The Maid's Tragedy</i> <i>A Chaste Maid in Cheapside</i>	D. W. Gregory Michael V. Taylor / Company John Murrell Beaumont & Fletcher Thomas Middleton	Ralph Small Ron Cameron-Lewis Lezlie Wade Patrick Young Rod Ceballos
2007/2008	<i>David Copperfield</i> <i>Women of the Klondike</i> <i>That Summer</i> <i>Pillars of Society</i> <i>The Trojan Women & Lysistrata</i>	Dickens / Thomas Hischak Frances Backhouse / Company David French Henrik Ibsen Ellen McLaughlin versions	Mimi Mekler Marc Richard Patrick Young Heinar Piller Catherine McNally
2008/2009	<i>A New Life</i> <i>Murderous Women</i> <i>Bonjour, Là, Bonjour</i> <i>The Taming of the Shrew</i> <i>The Taming of the Tamer</i>	Elmer Rice Frank Jones / Company Michel Tremblay William Shakespeare John Fletcher	Scot Denton Marc Richard Terry Tweed Mimi Mekler Patrick Young
2009/2010	<i>Widows</i> <i>Don't Drink the Water</i> <i>Andromache</i> <i>String of Pearls & The Spot</i> <i>The Clandestine Marriage</i>	Ariel Dorfman Brenda Lee Burke / Company Jean Racine / Richard Wilbur Michele Lowe / Steven Dietz Garrick & Colman	Bill Lane Marc Richard & Suzanne Bennett Patrick Young Ralph Small Peter Van Wart
2010/2011	<i>Jane Eyre</i> <i>Child of Survivors</i> <i>Witches & Bitches</i> <i>The Women</i> <i>The Winter's Tale</i>	Brontë/Robert Johanson Bernice Eisenstein/Company Shakespeare & Friends Clare Boothe Luce William Shakespeare	Scot Denton Ralph Small Kelly Straughan Terry Tweed Mimi Mekler
2011/2012	<i>Nicholas Nickleby Part 1</i> <i>1917: The Halifax Explosion</i> <i>Goodnight Desdemona</i> <i>(Good Morning Juliet)</i> <i>Our Country's Good</i> <i>Stage Door</i>	Dickens/David Edgar Nimbus Pub./Company Anne-Marie MacDonald Timberlake Wertenbaker Ferber & Kaufman	Peter Van Wart & Kevin Bowers Meredith Scott Daniel Levinson Patrick Young Heinar Piller
2012/2013	<i>Semi-Monde</i> <i>In the Midst of Alarms</i> <i>The Farndale Avenue...</i> <i>Production of Macbeth</i> <i>A Midsummer Night's Dream</i> <i>Macbeth</i>	Noël Coward Dianne Graves / Company David McGillivray & Walter Zerlin Jr. William Shakespeare William Shakespeare	Brian McKay Ralph Small Patrick Young Sue Miner David Matheson

Theatre Erindale Production History

Year	Title	Author	Director
1993/1994	<i>The Farm Show</i> <i>Pericles, Prince of Tyre</i>	Theatre Passe Muraille William Shakespeare	Patrick Young Mimi Mekler
1994/1995	<i>1837: The Farmers' Revolt</i> <i>Lion in the Streets</i> <i>The Scams of Scapin</i> <i>The Relapse</i>	Theatre Passe Muraille Judith Thompson Molière John Vanbrugh	Terry Tweed Katherine Kaszas Mimi Mekler Patrick Young
1995/1996	<i>Six War Years</i> <i>The Rimers of Eldritch</i> <i>Les Belles-Soeurs</i> <i>The Revenger's Tragedy</i>	Barry Broadfoot / Company Lanford Wilson Michel Trem Cyril Tourneur	Cameron & Frid Jim Millan Mimi Mekler Patrick Young
1996/1997	<i>Story Theatre</i> <i>The Gut Girls</i> <i>7 Stories</i> <i>Mycenae (from The Greeks)</i>	Paul Sills / Grimm Brothers Sarah Daniels Morris Panych John Barton, et al	Mimi Mekler Katherine Kaszas Patrick Young Simon Johnston
1997/1998	<i>A Harvest Yet to Reap</i> <i>The Hot L Baltimore</i> <i>Vital Signs</i> <i>Midsummer Night's Dream</i>	Savage&Wheeler / Company Lanford Wilson Jane Martin William Shakespeare	Mimi Mekler David Ferry Patrick Young Greg Peterson
1998/1999	<i>Lovers in Dangerous Times</i> <i>Fen</i> <i>The Women</i> <i>The Hypochondriac</i>	Shakespeare & Friends Caryl Churchill Clare Boothe Luce Molière / Alan Drury	Ron Cameron Brian Richmond Patricia Hamilton Patrick Young
1999/2000	<i>The Millennium Project</i> <i>Pride's Crossing</i> <i>Lysistrata</i> <i>Hard Times</i>	Dennis Hayes & Company Tina Howe Aristophanes / Rudall Charles Dickens / Jeffreys	Dennis Hayes Brian Richmond Vinetta Strombergs Christina James
2000/2001	<i>Love's Fire</i> <i>Once Upon Our Time</i> <i>The Comedy of Errors</i> <i>En Pièces Détachées</i> <i>All's Well That Ends Well</i>	Bogolian, Finn, Guare, Kushner, Norman, Shange, Wasserstein Dennis Hayes & Company William Shakespeare Michel Tremblay William Shakespeare	Ralph Small Dennis Hayes Ron Cameron Duncan McIntosh Mimi Mekler
2001/2002	<i>Glengarry Glen Ross</i> <i>and Top Girls</i> <i>The Loyalist Project</i> <i>The Children's Hour</i> <i>The Beaux' Stratagem</i> <i>The Man of Mode</i>	David Mamet Caryl Churchill Ron Cameron & Company Lillian Hellman George Farquhar George Etherege	Duncan McIntosh and Zaib Shaikh Ron Cameron Jane Carnwath Mimi Mekler Patrick Young
2002/2003	<i>The Aberhart Summer</i> <i>Brass Buttons & Silver Horseshoes</i> <i>Les Liaisons Dangereuses</i> <i>Les Belles-Soeurs</i> <i>'Tis Pity She's a Whore</i>	Conni Massing / Alan Powe Linda Granfield / Company Christopher Hampton Michel Tremblay John Ford	Katherine Kaszas Mimi Mekler Patrick Young Vinetta Strombergs Greg Peterson
2003/2004	<i>The Libation Bearers</i> <i>The Golden Ass</i> <i>The Vic</i>	Aeschylus / Tony Harrison Apuleius / Company Leanna Brodie	Heinar Piller Cameron-Lewis & Frid Rebecca Brown

Thanks to you, our 2012-13 season again set new records both for attendance and for acclaim, with more sold out performances than ever before. Thanks to you, our grads are starring on CBC and at Second City and Soulpepper, running theatre companies across the country, writing award-winning plays, and mentoring the next generation of young performers. This season is going to be another wild ride and once again you are wanted on the voyage! We can't wait to see you back at the theatre!

Sincerely,



From the Director ...

In the final year of my undergraduate studies (twenty years ago!), I was fortunate to be able to work on George Feydeau's classic farce *A Flea in Her Ear*. It was everything that we students needed at the time.

Feydeau's meticulously crafted farces allow theatre students to train with opposite-seeming but essentially harmonious facets of an actor's make up. In order for the pace and language to work, they require vocal and physical precision in managing the quick shifts of tempo and the accuracy of the asides, yet they also require passion for the stakes to be sky high. They ask for cool discipline to resist the temptation of being led by the audience instead of leading them through the humour, yet they also require the actors to cling desperately to their humanity in the midst of insane situations.

This adaptation by the Blakeys is adept at preserving the madness of Feydeau's world while at the same time softening the harsher parts. The characters are rich and boldly realized. The witty banter, innuendoes, and double entendres leap off the page. We are delighted to have this excellent Canadian version to work from.

Watching these students come to grips with the joys and perils of this material has been an exhilarating experience. How much is too much? How far is too far? How can we be authentic to the emotional core of the situation? Where do the physical action and emotional stakes need to be heightened to match the absurdity of the universe that these characters inhabit? Although we have set the play in a time long past, Montreal in 1889, these students, many of whom are in their final year in this program, have created a world that is fresh as tomorrow. Enjoy the show!

– David Matheson

About the Authors ...



DOROTHY LEES BLAKEY AND BRIAN BLAKEY met as fellow students in the Department of French at the University of Manchester, UK. In 1969 they arrived in Canada, where Brian became Chair of the Romance Languages Department at McMaster University. His numerous translations of French plays included medieval and eighteenth-century works, as well as those of master farceur Georges Feydeau: *Your Late Mama* in 1976, and *A Bee in Her Bonnet* at the Manitoba Theatre Centre in 1979. Meanwhile

Dorothy, also an Associate of the London College of Music (Pianoforte), had become a professional composer, actress, and musical theatre writer. She has performed on stage, radio and television both in Canada and in the UK, and her music and writing have been produced, recorded, and published internationally.



A Stitch in Time (from Feydeau's *tailleur pour dames*) was produced in Brian Blakey's translation at the National Arts Centre and the Bastion Theatre (Victoria) in 1976, and in 1980 at the Nuffield Theatre in Lancaster, UK. After Brian's death in 1979, Dorothy completed his translation of *Please ... Not in the Nude!* for a McMaster production in 1980, and re-translated and adapted *A Stitch in Time* for the Lighthouse Festival's 1920s-set production in 1998.

GEORGES FEYDEAU (1862-1921): Son of Ernest Feydeau, he was the master farceur of the 1890s in France. While English farce of the Victorian period is cosy and genial, Feydeau's treatment of marital deceit and discord is sharply subversive of family life. His farce suggests a well-oiled machine designed to destroy order, rationality, and established pieties. The obsessive precision of his stage directions is matched by fiendishly complicated plots and a breathless tempo which whirls his characters along from one crisis to the next. Plot and props (electric bells, etc.) are primary, character is reduced to a cog in the machine. Failures of communication are endemic (misheard notes, foreigners with poor French) and physical disabilities are played for laughs—Mathieu's stammer in *L'Hôtel du libre échange* (1894), Fontanet's bad breath in *Un fil à la patte* (1899). Ritual humiliation is common, as when 'la môme Crevette' is covered with a rug and used as a seat in *La Dame de chez Maxim* (1899). Feydeau represents the best of farce as the disguised fulfilment of repressed desires.



— S. Beynon John (*The Oxford Companion to French Literature*)

Bruce Barton (Executive Producer, Acting UTM Coordinator)	Drama Studies
Anthony Bastianon & Denise Oucharek	Singing, Music Direction
Roger Beck	Professor Emeritus, UTM
Suzanne Bennett	Tutorials
Nancy Bowe, Katrina Carrier	Wardrobe Assistants
Sarah Jane Burton	Movement & Dance; Choreographer
Ron Cameron-Lewis	Styles; Professor Emeritus, Sheridan
Nancy Copeland (on leave)	Drama Studies
Teodoro Dragonieri	Character Mask
Laurence Follows	Tutorials, Acting Technique, Styles
Merylee Greenan	Assistant to the Chair, UTM English & Drama
Pil Hansen	Drama Studies
Dennis Hayes	Stagecraft
Melee Hutton	Guest Director
Robert Kennedy	Tutorials
Daniel Levinson	Stage Combat; Fight Direction
Edward (Ned) Loach	Assistant to the Associate Dean, Sheridan Visual & Performing Arts
Joanne Massingham (Head of Wardrobe)	Stagecraft, Production; Costumer
David Matheson	Scene Study, Styles, Tutorials; Director
Debra McKay	Theatre Organization, Stage Management
Catherine McNally	Tutorials
Mimi Mekler	Clown
Jan Munroe, Kathryn Phillips, Tom Schweitzer, Barbara McLean Wright	Stage Managers
Denise Norman	Voice and Text, Production, Tutorials
Chantal Panning	Box Office
Martin Revermann	Drama Studies
Heinar Piller	Guest Director
Marc Richard	Movement
Dianne Robertson	Undergraduate Advisor, UTM English & Drama
Barbara Rowe	Guest Costumer
Ed Sahely	Improvisation
Meredith Scott	Voice & Text, Production
Sarah Scroggie (Head of Properties & Scenic Art)	Stagecraft, Production
Jim Smagata (Technical Director, Erindale Studio Theatre)	Stagecraft, Production; Lighting Design
Ralph Small	Tutorials, Styles; Guest Director
Grace Smith	Drama Studies
Tracy Smith	Program Support Officer, Sheridan Visual & Performing Arts
Lawrence Switzky	Drama Studies
Holger Syme (Chair, UTM English & Drama)	Drama Studies
Joseph Taylor (Technical Director, MiST)	Production
Peter Urbanek (Manager of Theatre Operations)	Stagecraft, Production; Set Design
Matt White	Tutorials
Aaron Willis	Guest Director
Timothy Youker	Drama Studies
Patrick Young (Artistic Director, Sheridan Coordinator)	Scene Study, Professional Practice; Director

Rosemary Dunsmore, Brian McKay, Andy McKim, Nicole Stamp, Kelly Thornton, Terry Tweed,
Lee Wilson..... Guest Artists
Neil Silcox (*Chair*), Roger Beck, Tracey Geobey, Paula Gonsalves, Katherine Kaszas, Heinar Piller,
Jenny Salisbury, Nicole St. Martin, Matt White..... Advisory Committee
Michael Rubinoff..... Associate Dean, Department of Visual and Performing Arts, Sheridan
Holger Syme..... Chair, Department of English and Drama, UTM
Ronni Rosenberg..... Dean, Faculty of Animation, Arts and Design, Sheridan
Amy Mullin..... Dean and Vice Principal Academic, UTM

☞ **Friends of Theatre Erindale** ☞

Our heartfelt thanks to the following generous individuals and organizations who are committed to supporting education in the arts and the future stars of Canadian theatre. Their donations sponsor student scholarships, production materials and equipment, capital projects, and guest artists.

Angels (\$5000 plus)	The Estate of Arthur L. Fernie	
VIPs (\$1000 - \$4999)	Roger & Janet Beck Nancy Copeland	
Boosters (\$500 - \$999)	Patrick Young	
Fans (\$200 - \$499)	Ian Young John McCaffrey Dr. Gordon & Nadia Murphy Wendy & Thom Séguin Dr. Becky Sigmon Kevin Smith Leslie Thomson	
Patrons (\$50 - \$199)	Sarah Jane Burton Ron Cameron-Lewis Geoff Dunlop Denise Norman Peter Silcox Joe & Lia Veit	Ron & Lloyd Cameron-Lewis Christopher Carlton Barbara Michasiw Catherine Rubincam Ralph Small
Donors (\$25 - \$49)	Ed & Mary Bajus John Beamish/Valerie Dobson Chris Dunning Rae Arlene Jones Sharon McCarthy Jane Moon	Kathleen Jay Robert & Audrey Lang Fraser McKee Kenneth & Cheryl Sloan

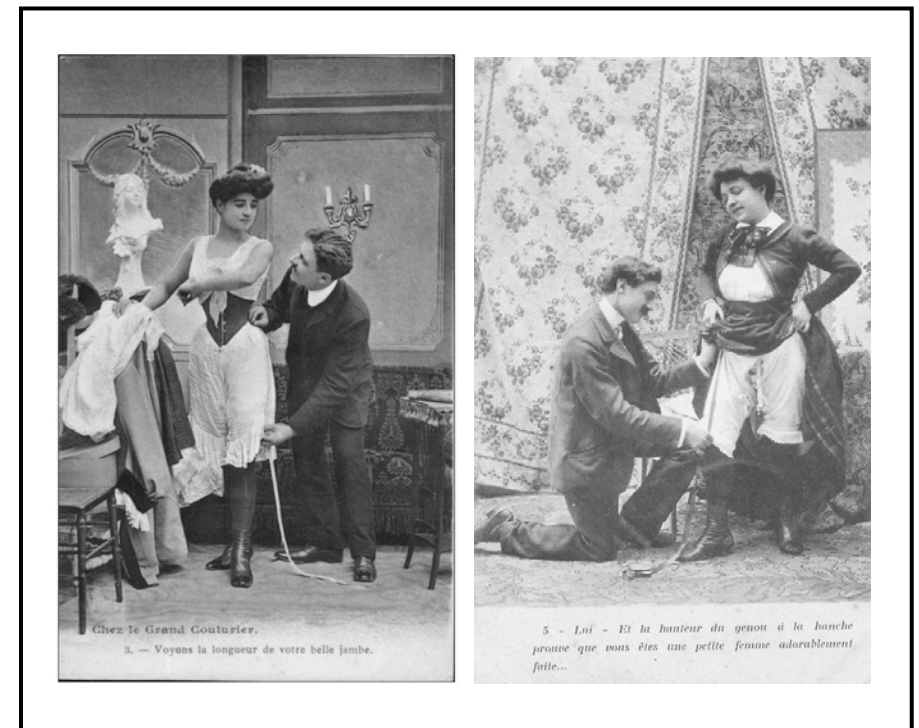
Contact Tara Verma, Coordinator, UTM Office of Advancement (tara.verma@utoronto.ca) 905-828-5214 or Jennifer Deighton, Manager, Sheridan Office of Advancement (jennifer.deighton@sheridancollege.ca) 905-845-9430 ext. 4032).



Special Thanks to

Theatre Orangeville, Theatre Sheridan,
Robert Gill Theatre, Linda Phillips
Robert Paquette, Sheridan College

We acknowledge the generous support of Canadian Actors' Equity Association



A Stitch in Time

by Dorothy Lees-Blakey and Brian Blakey
(adapted from Georges Feydeau's *tailleur pour dames*)

Directed by David Matheson*
Set by Patrick Young
Costumes by Joanne Massingham
Lighting by James W. Smagata
Stage Management by Barbara McLean Wright*

THE CAST

(in order of first appearance):

ETIENNE..... Brian Postalian
YVONNE MOULINEAUX..... Alex Spyropoulos
DR. ROBERT MOULINEAUX Victor Pokinko
M. BASSINET Wes Payne
MME. AIGREVILLE Megan O'Kelly
SUZANNE AUBIN Claire Sherwood
ANATOLE AUBIN Mark Palinski
MLLE. POMPONETTE Laura McCallum
MME. D'HERBLAY Olivia Orton
ROSA DE MONTELMAR..... Natasha Ramondino

Deputy Stage Manager..... Thomas Schweitzer*
Fight Captain..... Alex Spyropoulos
Assistant Stage Managers..... Sarah Kern, Kira Meyers-Guiden

SCENE SYNOPSIS

The play is set in Montréal in the late 1800s.

ACT I: *Morning.*
The apartment of Dr. Robert Moulineaux.
— 10-minute Intermission —

ACT II: *Later that day.*
An apartment recently left vacant by a dressmaker.
— 10-minute Intermission —

ACT III: *Still later.*
The apartment of Dr. Robert Moulineaux.

* with the permission of Canadian Actors' Equity Association

A Stitch in Time is produced by special arrangement with the Playwrights' Guild of Canada.

JAMES W. SMAGATA (Technical Director, Lighting Design)

Jim's passion for theatre began in Grade 7 when he was cast as Major-General Stanley in *The Pirates of Penzance*. He has performed lead roles in *Our Town* and *Bus Stop*. Before Jim graduated from Brock University, he acted in several drama department shows, including a 1950's Old West version of Molière's *Tartuffe*. Jim changed horses in the stream and focused on Technical roles, for Rainbow Troupe, Technical Coordinator at Brock, Technical Manager at Grande Prairie Regional College in Alberta, Chief of Production Services at Nepean Centrepointe Theatre, and now Technical Director at UTM. In Alberta he directed a few shows: *The Gin Game*, *Portrait in Black*, *The Creature Creeps!*, *Little Shop of Horrors*, performed as Gandalf in the musical *The Hobbit*, and Mike in Jim Betts' musical *Thin Ice*. In 1995, he directed and performed in the Drama Club's production of *Pump Boys and Dinettes*. He was Technical Director and Lighting Designer for the 2001 Mississauga Arts Council Awards, and worked as a sound technician at the Shaw Festival. Jim spends his "spare time" as a post-production sound engineer and voice actor for several web-based audio drama companies.



Teaching includes Waterloo, Dalhousie, George Brown, Humber, and Gaya College in Malaysia. He is the founding Artistic Director of Theatre Erindale and the founding Sheridan Coordinator of the Theatre and Drama Studies Program (which is now in its twenty-third year). For Theatre Erindale he has directed seventeen plays and designed or adapted several more; for Theatre Sheridan two; and credits elsewhere include the second production of *Midnight Madness*, the World Première of *The Growing Season*, *The Shadow Box*, *The Crucible*, *Mandragola*, *Split*, *Cheek to Cheek*, *You Can't Take it With You*, *Waiting for the Parade*, and more new play workshops than he can count.

PETER URBANEK (Manager of Theatre Operations)

This is Peter's fourteenth season at Theatre Erindale. For the past thirty-five years he has worked in theatres across the country. His past credits include Production Manager for: Magnus Theatre, The University of Western Ontario, Markham Theatre and the Globe Theatre. Peter has over four hundred lighting and set design credits. He has worked with such companies as Mountain Dance Troupe, Vancouver Playhouse, National Ballet, Canadian Opera Company, Taffelmusik, Les Grande Ballets Canadien, Stageright Productions, Fanshawe College, Alberta Ballet Company, and Jabberwocky Theatre for Children. He was Production Manager, taught set/lighting design for eight years at the University of Western Ontario. For Theatre Safety Consultants he inspected and consulted on over four hundred theatre projects and was theatre consultant for Fanshawe College's Live Performance Industry facility. Peter's movie and television work includes, *The Bridge to Silence* with Lee Remick and Marlee Matlin, *The Super Dave Show*, *Raffi In Concert*, *Diamonds*, and *X-Men: The Movie*.

JOANNE MASSINGHAM (Head of Wardrobe, Costumer)

Joanne is pleased to be returning for her nineteenth season at Theatre Erindale. Unlike the people she is surrounded by, she has never set foot on a stage when there are audience members in attendance and is happy living in the wings. She is however, always in awe of those who have the courage to step into the lights. Some costume design credits for Theatre Erindale include *The Hypochondriac*, *Lovers in Dangerous Times*, *A Midsummer Night's Dream*, *Hot L Baltimore*, *The Revenger's Tragedy*, *Gut Girls*, *7 Stories*, *Les Belles-Soeurs* and *The Relapse*. She has also designed costumes for *My Fair Lady* and *The Buddy Holly Story* (Stage West), and set and costumes for Artemis Theatre's acclaimed 1998 production of Charles Dickens reading from *A Christmas Carol* (Theatre Passe Muraille). She has been Head of Wardrobe for numerous Theatre Companies including Theatre Sheridan, *Le Théâtre Français de Toronto*, Young Peoples' Theatre, U of T Opera School, York University, Theatre Passe Muraille and Skylight Theatre.

*Please turn cell phones, pagers and watch alarms completely off.
Photographs and recordings are strictly prohibited.
We regret that, out of consideration for both the audience and the performers,
latecomers and re-entries are not permitted.*

FOR A STITCH IN TIME

Speech & Dialect Coach Denise Norman
 Movement Coach Sarah Jane Burton
 Lighting Operator Andrew Avon
 Sound Operator Michael Daneluzzi
 Set Crew.....Connor Dutchak, Stuart Hefford, Sarah Kern, Nathaniel Voll,
 Tatiana Stewart-Haas, Kyra Weichert (*chiefs*); Malindi Ayienga,
 ... Hershel Blatt, Jack Comerford, Shawn Doyle, Alessa Dufresne, Avery Logan,
 Katherine McDonald, Johnathan Muench, Thinh Nguyen, Zane O'Connor,
 Marissa Otto, Emily Thorne, Rachel Van Duzer
 Victoria Dennis, Brett Houghton, Bryn Kennedy
 Properties & Paint CrewDominique Corsino, Colette Fitzgerald,
 Kira Meyers-Guiden, Chelsea Riesz (*chiefs*);
 Gabriel Golin, Grzegorz Guzik, Caleb Harwood,
 Sarah Hime, Brett Houghton, Bryn Kennedy
 Wardrobe CrewChelsea Riesz, Kyra Weichert (*chiefs*);
 Malindi Ayienga, Hershel Blatt, Jack Comerford,
 Shawn Doyle, Alessa Dufresne
 Scenic Artist..... Lisa Burke
 Make-up and Hair Consultant Samantha Miller-Vidal
 Poster Design Jessica Jackson
 Front of House Crew Chief..... Emma Robson

FOR THEATRE ERINDALE

Artistic Director Patrick Young
 Executive Producer Bruce Barton
 Manager of Theatre OperationsPeter Urbanek
 Assistant to Manager of Theatre Operations..... Kathryn Phillips
 Technical Director James W. Smagata
 Head of Wardrobe..... Joanne Massingham
 Wardrobe Assistant.....Katrina Carrier, Nancy Bowe
 Head of Properties and Scenic Art..... Sarah Scroggie
 Stage Carpenter Joseph Taylor
 Production Assistants..... Davin Allan, Courtney Keir,
 Nathaniel Kinghan, Roxanne Norman, Brian Postalian,
 Samuel Turner, Chiamaka Ugwu
 Business Manager Rob Eberts
 Box Office Manager Chantal Panning
 Box Office Staff..... Daniela Boyaninska, Elsie Ikhariale,
 Daphne Liu, Precious Sidambe
 Program..... Merrylee Greenan
 Brochure, Season Poster and Program Cover DesignAlison Dias

The Cast . . .

LAURA MCCALLUM, 3rd Year - Theatre and Drama Studies

Home Town: Kitchener, ON **For Theatre Erindale:** Company - *Rebel Daughter*; Assistant Stage Manager - *Macbeth*; Props Crew Chief - *Semi-Monde*; Wardrobe Crew - *Our Country's Good*; Set Crew - *Good Night Desdemona (Good Morning Juliet)* **Other Companies:** Assistant Director - *Arcadia* (UTM Drama Club); Pep Squad Member - *High School Musical* (Drayton Entertainment) **Favourite Saying:** "The most wasted of all days is one without laughter." - e.e. cummings

MEGAN O'KELLY, 4th Year - Theatre and Drama Studies

Home Town: Oakville, ON **Other Training:** Performing Arts Preparation at Sheridan College **For Theatre Erindale:** Abigail Williams - *The Crucible*; Robin Starveling the Tailor - *Midsummer Night's Dream*; Company - *In the Midst of Alarms*; Assistant Stage Manager - *1917: The Halifax Explosion* **Beck Festival:** Liss - *Catantonia* **Other Companies:** Arya Stark - *Thrones & Recreation* (Queens Players Toronto); Amy - *How I Lost One Pound - The Musical* (The Toronto Fringe Festival) **Favourite Saying:** "Life moves pretty fast. You don't stop to look around once in a while, you could miss it!"- Ferris Bueller

OLIVIA ORTON, 3rd Year - Theatre and Drama Studies

Home Town: Blind River, ON **For Theatre Erindale:** Company - *Rebel Daughter*; Assistant Stage Manager - *Semi-Monde*; Wardrobe Crew Chief - *Macbeth* **Other Companies:** Thomasina Coverly - *Arcadia* (UTM Drama Club); Marie, Vero - *Bloc Sept* (Theatre Jeunesse-Nord); Salazi - *La File Prodigieuse* **Favourite Saying:** "If you can't get rid of the skeleton in your closet, you'd best teach it to dance." - George Bernard Shaw

MARK PALINSKI, 4th Year - Theatre and Drama Studies

Home Town: Mississauga, ON **Other Training:** Cawthra Park S.S. Regional Arts Program **For Theatre Erindale:** Judge Hawthorne - *The Crucible*; Ross - *Macbeth*; Company - *In the Midst of Alarms*; Wardrobe - *Our Country's Good*; **Other Companies:** Siward, Captain, Doctor - *Macbeth* (Ale House Theatre Company); Ben - *The Trail of Embrace* (U of T Drama Festival) Bogdan - *Mad Forest* (Cawthra Park Secondary School) **Ambition:** To reach a point, level, height...and surpass it.

WES PAYNE, 4th Year - Theatre and Drama Studies

Home Town: Caledon, ON **Other Training:** Mayfield Secondary School Drama Program, The Brampton Theatre School **For Theatre Erindale:** Giles Corey - *The Crucible*; Puck - *Midsummer Night's Dream*; Company - *In the Midst of Alarms*; Assistant Stage Manager - *Nicholas Nickleby*; Soundboard Operator - *Stage Door*; Wardrobe Crew - *The Winter's Tale*; Props Crew - *Jane Eyre* **Beck Festival:** Stage Manager - *'Dentity Crisis, Cherry Docs* **Other Companies:** Riff Raff - *The Rocky Horror Show* (Theatre Alive); Stage

Direction...



DAVID MATHESON (Director)

David Matheson began his training with a BA from Acadia University and later attended the London Academy of Music and Dramatic Arts in England. He holds a MFA (Directing) from York University.

David's two decade long career as an actor includes roles with the Neptune Theatre, Theatre New Brunswick, The Atlantic Theatre Festival, Exodus Theatre, The Chester Playhouse as well as with numerous independent theatre companies. Recently he appeared as "Muldoon" in the Independent film *The Dirties* which garnered the Grand Jury prize at the Slamdance Film Festival.

Directing work includes eight productions as Artistic Director of Exodus Theatre, including a critically acclaimed Julius Caesar, and several premieres of new work. In June of 2008 David directed Pericles Snowdon's *Bluebeard* for the Toronto Fringe Festival, a production that was awarded Patron's Pick. In August of 2008 he directed Tennessee Williams *A Streetcar Named Desire* for Upper Canada Repertory Company. His production of Melissa James Gibson's play *[sic]* in 2010 was a Toronto Fringe Festival hit and was awarded a place in the Best of the Fringe. As Artistic Director of Toronto's Wordsmyth Theatre David has overseen four productions. Recently he directed an all-female *Brothers Karamazov* for Wordsmyth (two Dora Mavor Moore Award nominations) and appeared in the role of Gus in the *Dumb Waiter* (four Dora nominations, and one win for Set Design.)

In August of 2012, David Matheson became full time faculty at Sheridan College. He is delighted to be directing his second production with Theatre Erindale. He would like to thank his wife Andrea for her love and support.

PATRICK YOUNG (Artistic Director, Set Design) graduated in English from Victoria College, University of Toronto, trained in Theatre on a graduate scholarship at Indiana University, and was soon a well-known actor across Canada. His Toronto credits included the record-breaking hits *Flicks*, *The Relapse*, and the original production of *Automatic Pilot*, as well as *Chinchilla* and the last national tour of *Spring Thaw*. Elsewhere the range included *Misalliance* and *Threepenny Opera* in Boston, *Uncle Vanya* and *Tobacco Road* in Indiana, *Windsor* in Charlottetown, *Dames at Sea* in Winnipeg, *Hay Fever* across BC and *Scapin* across Ontario, plus guest starring on such TV series as *The Great Detective* and *Night Heat*. During the 1980s, he branched into playwriting, directing, and teaching. He is the author of the award-winning biographical plays "Winnie" (also filmed for television), *Aimee!*, and *Abigail, or The Gold Medal*, plus numerous industrial shows. He has held the posts of Artistic Director of Dalhousie Theatre Productions in Halifax, Director/Dramaturg of the Music Theatre Writers' Colony at the Muskoka Festival, and Associate Director/Playwright in Residence at the Lighthouse Festival Theatre.



SARAH KERN (Assistant Stage Manager)

2nd Year - Theatre and Drama Studies

Home Town: Claremont, ON **Beck Festival:** Assistant Stage Manager, Sound Operator - *Phillip Glass Buys a Loaf of Bread*; Sound Operator - *Picking Up the Pieces* **Favourite**

Saying: Be who you are and say what you feel, because those

who mind don't matter and those who matter don't mind. - Dr. Seuss

Twitter @TheatreErindale



Facebook Theatre Erindale



Manager - *December 1917* (Well Fought Theatre Company); Enjolras - *Les Misérables* (The Brampton Theatre School) **Favourite Saying:** "Our truest life is when we are in dreams awake." - Henry David Thoreau

VICTOR POKINKO, 4th Year - Theatre and Drama Studies

Home Town: Ottawa, ON **Other Training:** Shakespeare: The Wylde Project **For Theatre Erindale:** Danforth - *The Crucible*; Company - *In the Midst of Alarms*; Demetrius - *Midsummer Night's Dream*; Tix, Ensemble - *Nicholas Nickleby* **Beck Festival:** Smirnov - *The Bear*; Baker - *Phillip Glass Buys a Loaf of Bread*; Villain - *Untitled: The Musical* **Other Companies:** Clinton - *Fort Isabel* (Toronto Fringe); Giovanni - *Tis Pity She's a Whore*; Silvius, Adam - *As You Like It* (Bear & Company); Alan, Bob, Clive - *No Power Greater* (Dramamuse) **Favourite Saying:** "It is a mistake to think you can solve any major problem just with potatoes."

BRIAN POSTALIAN, 4th Year - Theatre and Drama Studies

Home Town: Toronto, ON **Other Training:** Toronto Youth Theatre's The Soloist Masterclass **For Theatre Erindale:** Cheever - *The Crucible*; Francis Flute - *Midsummer Night's Dream*; James Secord - *In the Midst of Alarms*; Assistant Stage Manager - *Goodnight Desdemona (Good Morning Juliet)* **Beck Festival:** Director - *The Bear*, *Phillip Glass Buys a Loaf of Bread* **Other Companies:** Attache, Amphitheus - *Lysistrata - The Sex Strike* (Canopy Theatre Company); Ensemble - *Shakespeare on the Subway* (Spur-of-the-Moment Shakespeare); Assistant Director - *Of A Monstrous Child: A Gaga Musical* (Buddies in Bad Times/Ecce Homo Theatre) **Favourite Saying:** "If at first you don't succeed, failure may be your style" - Quentin Crisp

NATASHA RAMONDINO, 4th Year - Theatre and Drama Studies

Home Town: Oakville, ON **Other Training:** West End Studio Theatre, The Oakville Academy for the Arts **For Theatre Erindale:** Ann Putnam - *The Crucible*; Courtier, Peaseblossom - *Midsummer Night's Dream*; Company - *In the Midst of Alarms*; Props Crew Chief - *Stage Door, Our Country's Good*; Wardrobe Crew Chief - *1917: The Halifax Explosion* **Beck Festival:** Alice - *Picking Up the Pieces* **Other Companies:** Director - *Days Like These* (U of T Drama Festival); Transylvanian - *The Rocky Horror Show* (Theatre Alive) **Favourite Saying:** "No one can make you feel inferior without your consent." - Eleanor Roosevelt

CLAIRE SHERWOOD, 4th Year - Theatre and Drama Studies

Home Town: Toronto, ON **For Theatre Erindale:** Hecate, Seyton - *Macbeth*; Mrs. Morris, Elizabeth - *In the Midst of Alarms*; Acting Assistant Stage Manager, Wardrobe Crew Chief - *Our Country's Good*; Wardrobe - *The Clandestine Marriage* **Other Companies:** Kagome - *Pieces of People*; Hannah Douglas - *I.D.*; Tommy - *Torn Down Still Standing* (Circle Playhouse) **Favourite Saying:** "Let's face it: we are all inadequate. Yet, even knowing that, we are also capable of surpassing all the expectations, limits, and negativity that plague us. It is up to us to rise to the occasion and inspire others to do the same." - Kaysey Davis

2013/2014 HART HOUSE THEATRE SEASON

	BONE CAGE Sept. 20–Oct. 5		TWELFTH NIGHT Nov. 6–23	Box Office: www.uofttix.ca or 416.978.8849 Adults: \$28 Seniors: \$17 Students: \$15
	THE WEDDING SINGER Jan. 10–25		GOODNIGHT DESDEMONA (GOOD MORNING JULIET) Feb. 28–Mar. 8	

HartHouse For more info on shows and subscriptions, visit: www.harthousetheatre.ca

If you have any questions or comments regarding your experience please contact:

Peter Urbanek
Manager of Theatre Operations
Department of English and Drama, University of Toronto Mississauga
3359 Mississauga Road North, Rm 290A NB
Mississauga, ON L5L 1C6

905-569-4739 Voice, 905-828-5202 FAX
email: p.urbanek@utoronto.ca

ALEX SPYROPOULOS, 4th Year - Theatre and Drama Studies

Home Town: Oakville, ON **For Theatre Erindale:** Sarah Good - *The Crucible*; First Witch - *Macbeth*; Susan, Nancy - *In the Midst of Alarms* **Beck Festival:** Annette Styx - *Neck-Breaking Car-Hop*; Woman 2 - *Philip Glass Buys a Loaf of Bread* **Other Companies:** Mistress Quickly - *Merry Wives of Windsor* (Bard in the Park); Becky - *Linda and Jason* (Coffee House Theatre); Janet - *Days Like These* (UofT Drama Festival) **Favourite Saying:** "Never be afraid to laugh at yourself, you might be missing out on the biggest joke of the century." - Joan Rivers



Stage Management...



BARBARA McLEAN WRIGHT (Stage Manager)

Barb is pleased to be working again at Theatre Erindale having previously stage managed *A Midsummer Night's Dream*, *Our Country's Good*, *The Winter's Tale* and *The Spot/String of Pearls*. She has worked for several theatre companies including Mirvish Productions, Theatre Aquarius, Ross Petty Productions, Centaur Theatre, Drayton Entertainment, Lighthouse Festival Theatre, Theatre Orangeville, Sudbury Theatre Centre, and The Grand Theatre. Barb wishes to thank Patrick for once again giving her the opportunity to be a part of mentoring the students, our theatrical future. She also wishes to thank David, Thomas, the cast and crew for their hard work. As always she sends a big thanks to her family and friends for their unending love and support.



THOMAS SCHWEITZER (Deputy Stage Manager)

Born and raised in Kitchener Waterloo, Tom earned a bachelor of music degree from the University of Toronto, and is a graduate of The American Academy of Dramatic Arts (New York). Tom was Director of Production for Opera Ontario (Opera Hamilton) from 1990-2006. He has worked as stage manager for many companies across Canada, including the Royal Winnipeg Ballet, the Stratford Festival, the National Arts Centre (Ottawa), Bastion Theatre (Victoria BC), Rainbow Stage (Winnipeg) and the Toronto Symphony. He also directed and designed productions for community theatres throughout Ontario, Opera Piccola (Victoria BC) and Muskoka Summer Theatre. And for fourteen years, he directed and designed opera productions at Wilfred Laurier University (Waterloo).



KIRA MEYERS-GUIDEN, (Assistant Stage Manager)

2nd Year - Theatre and Drama Studies

Home Town: Kingston, ON **Other Training:** Royal Conservatory of Music Grade 6 Honours in Voice, Specialist High Skills Major; Canadian Improv Games, Competitive Improv **For Theatre Erindale:** Wardrobe Crew - *A Midsummer Night's Dream*; Set Crew - *Macbeth*, *A Midsummer Night's Dream* **Other Companies:** Fancy - *The F Word* (360 Productions); Stage Manager - *Bruised Porcelain* (Dramafest); Cha Cha DiGregorio - *Grease* (K.C.V.I.)