

	<i>Pride and Prejudice</i> <i>Jane Eyre</i>	Jane Austen / Christina Calvit Charlotte Brontë / Johanson	Patrick Young Ralph Small
2004/2005	<i>The Play's the Thing</i> <i>Alarum Within: theatre poems</i> <i>Unity (1918)</i> <i>Women Beware Women</i> <i>Love's Labour's Lost</i>	Skinner, Durang, Frayn Kimmy Beach / Company Kevin Kerr Thomas Middleton William Shakespeare	Paul Brown Ralph Small Patrick Young Sue Miner Heinar Piller
2005/2006	<i>Picnic at Hanging Rock</i> <i>The Immigrant Years</i> <i>Thirteen Hands</i> <i>Constant Players &amp; The Dispute</i> <i>The Country Wife</i>	Lady Lindsay / Shamas Barry Broadfoot / Company Carol Shields / Chris Dawes Marivaux / Watson & Lester William Wycherley	Laurence Follows Alex Fallis Ron Cameron-Lewis Mimi Mekler Patrick Young
2006/2007	<i>Radium Girls</i> <i>Canadian Kings of Repertoire</i> <i>Waiting for the Parade</i> <i>The Maid's Tragedy</i> <i>A Chaste Maid in Cheapside</i>	D. W. Gregory Michael V. Taylor / Company John Murrell Beaumont & Fletcher Thomas Middleton	Ralph Small Ron Cameron-Lewis Lezlie Wade Patrick Young Rod Ceballos
2007/2008	<i>David Copperfield</i> <i>Women of the Klondike</i> <i>That Summer</i> <i>Pillars of Society</i> <i>The Trojan Women &amp; Lysistrata</i>	Dickens / Thomas Hischak Frances Backhouse / Company David French Henrik Ibsen Ellen McLaughlin versions	Mimi Mekler Marc Richard Patrick Young Heinar Piller Catherine McNally
2008/2009	<i>A New Life</i> <i>Murderous Women</i> <i>Bonjour, Là, Bonjour</i> <i>The Taming of the Shrew</i> <i>The Taming of the Tamer</i>	Elmer Rice Frank Jones / Company Michel Tremblay William Shakespeare John Fletcher	Scot Denton Marc Richard Terry Tweed Mimi Mekler Patrick Young
2009/2010	<i>Widows</i> <i>Don't Drink the Water</i>  <i>Andromache</i> <i>String of Pearls &amp; The Spot</i> <i>The Clandestine Marriage</i>	Ariel Dorfman Brenda Lee Burke / Company  Jean Racine / Richard Wilbur Michele Lowe / Steven Dietz Garrick & Colman	Bill Lane Marc Richard & Suzanne Bennett Patrick Young Ralph Small Peter Van Wart
2010/2011	<i>Jane Eyre</i> <i>Child of Survivors</i> <i>Witches &amp; Bitches</i> <i>The Women</i> <i>The Winter's Tale</i>	Brontë/Robert Johanson Bernice Eisenstein/Company Shakespeare & Friends Clare Boothe Luce William Shakespeare	Scot Denton Ralph Small Kelly Straughan Terry Tweed Mimi Mekler
2011/2012	<i>Nicholas Nickleby Part I</i>  <i>1917: The Halifax Explosion</i> <i>Goodnight Desdemona</i> <i>(Good Morning Juliet)</i> <i>Our Country's Good</i> <i>Stage Door</i>	Dickens/David Edgar  Nimbus Pub./Company Anne-Marie MacDonald  Timberlake Wertenbaker Ferber & Kaufman	Peter Van Wart & Kevin Bowers Meredith Scott Daniel Levinson  Patrick Young Heinar Piller
2012/2013	<i>Semi-Monde</i> <i>In the Midst of Alarms</i> <i>The Fardale Avenue...</i> <i>Production of Macbeth</i> <i>A Midsummer Night's Dream</i> <i>Macbeth</i>	Noël Coward Dianne Graves / Company David McGillivray & Walter Zerlin Jr. William Shakespeare William Shakespeare	Brian McKay Ralph Small Patrick Young  Sue Miner David Matheson

One of the greatest dramas of the Twentieth Century

# The Crucible

by Arthur Miller

a Theatre Erindale production  
directed by  
**Aaron Willis**

**Oct. 24-Nov. 3, 2013**  
Thursdays 7:30pm  
Fridays 8:00pm  
Saturdays 2:00 and 8:00pm  
Sunday Nov. 3 2:00pm

**ERINDALE STUDIO THEATRE**  
63 LEIGHTS NORTH OF DUNDAS (OFF MISSISSAUGA RD.)

Tickets \$10 & \$15  
Box Office: 905-669-4369  
[www.theatreerindale.com](http://www.theatreerindale.com)

UNIVERSITY OF TORONTO MISSISSAUGA  
**Sheridan**

This program is available in larger print.

***From the Dean and Vice Principal Academic,  
University of Toronto Mississauga ...***

I am delighted to welcome you to the 22nd season of Theatre Erindale, with a focus on the theme of "Uppity Women!" My congratulations to the students, staff and faculty of the UTM-Sheridan Theatre and Drama Studies Program for providing superlative theatrical productions in an intimate setting that lets us observe the finest nuances of the dramatic art of our performers. Our program combines professional dramatic training with a broad academic perspective, and attracts extremely talented students across Canada and internationally.

As a member of the audience tonight, whether you are a Theatre Erindale Patron or a single ticket purchaser, you are in for a real treat. I know that you'll find this evening at the theatre a testament to the power of plays to stimulate us intellectually and move us emotionally, often generating new insights into life's possibilities. Whether the play you are attending is a reminder of grim events in history, or focuses on the more ridiculous of our interactions with one another, you will be exposed to the power that strong women have to question, challenge and shape the world around them.

- Amy Mullin

***From the Artistic Director ...***

"Uppity Women?" Yikes! Why title a season with a laughable expression for those of the female persuasion who speak out, who break the rules, who refuse to spend their lives saying 'yes sir' and 'no sir'? Well, because this season is especially about them, and even *by* them.

And they're not all saints: among those 'uppity women' are both heroes and villains. From the girls whose hysteria turns Salem upside down, to a feminist crusader and icon; from the Canadian adaptor of a French farce, to a comic novelist whose plays were concealed for 200 years, to the first woman ever to earn her living with her pen – we have them all on board this season, and we know you're going to find them thought-provoking, moving, inspiring and hilarious!

Today we are particularly proud to bring you Arthur Miller's *The Crucible*, one of the greatest dramas of the twentieth century. This unique and powerful piece of theatre is directed by special guest Aaron Willis making his Theatre Erindale debut, and to him we extend the warmest of welcomes. We add a special welcome *back* to one of our favourite stage managers, Thomas Schweitzer. And we are proudest of all to present as our cast the graduating class of the Sheridan-UTM Theatre and Drama Studies Program!

Thanks to you, our 2012-13 season again set new records both for attendance and for acclaim, with more sold out performances than ever before. Thanks to you, our grads are starring on CBC and at Second City and Soulpepper, running theatre companies across the country, writing award-winning plays, and mentoring the next generation of young performers. This season is going to be another wild ride and once again you are wanted on the voyage! We can't wait to see you back at the theatre!

Sincerely,



**Theatre Erindale Production History**

Year	Title	Author	Director
1993/1994	<i>The Farm Show</i> <i>Pericles, Prince of Tyre</i>	Theatre Passe Muraille William Shakespeare	Patrick Young Mimi Mekler
1994/1995	<i>1837: The Farmers' Revolt</i> <i>Lion in the Streets</i> <i>The Scams of Scapin</i> <i>The Relapse</i>	Theatre Passe Muraille Judith Thompson Molière John Vanbrugh	Terry Tweed Katherine Kaszas Mimi Mekler Patrick Young
1995/1996	<i>Six War Years</i> <i>The Rimers of Eldritch</i> <i>Les Belles-Soeurs</i> <i>The Revenger's Tragedy</i>	Barry Broadfoot / Company Lanford Wilson Michel Trem Cyril Tourneur	Cameron & Frid Jim Millan Mimi Mekler Patrick Young
1996/1997	<i>Story Theatre</i> <i>The Gut Girls</i> <i>7 Stories</i> <i>Mycenae (from The Greeks)</i>	Paul Sills / Grimm Brothers Sarah Daniels Morris Panych John Barton, <i>et al</i>	Mimi Mekler Katherine Kaszas Patrick Young Simon Johnston
1997/1998	<i>A Harvest Yet to Reap</i> <i>The Hot L Baltimore</i> <i>Vital Signs</i> <i>Midsummer Night's Dream</i>	Savage&Wheeler / Company Lanford Wilson Jane Martin William Shakespeare	Mimi Mekler David Ferry Patrick Young Greg Peterson
1998/1999	<i>Lovers in Dangerous Times</i> <i>Fen</i> <i>The Women</i> <i>The Hypochondriac</i>	Shakespeare & Friends Caryl Churchill Clare Boothe Luce Molière / Alan Drury	Ron Cameron Brian Richmond Patricia Hamilton Patrick Young
1999/2000	<i>The Millennium Project</i> <i>Pride's Crossing</i> <i>Lysistrata</i> <i>Hard Times</i>	Dennis Hayes & Company Tina Howe Aristophanes / Rudall Charles Dickens / Jeffreys	Dennis Hayes Brian Richmond Vinetta Strombergs Christina James
2000/2001	<i>Love's Fire</i> <i>Once Upon Our Time</i> <i>The Comedy of Errors</i> <i>En Pièces Détachées</i> <i>All's Well That Ends Well</i>	Bogosian, Finn, Guare, Kushner, Norman, Shange, Wasserstein Dennis Hayes & Company William Shakespeare Michel Tremblay William Shakespeare	Ralph Small Dennis Hayes Ron Cameron Duncan McIntosh Mimi Mekler
2001/2002	<i>Glengarry Glen Ross</i> <i>and Top Girls</i> <i>The Loyalist Project</i> <i>The Children's Hour</i> <i>The Beaux' Stratagem</i> <i>The Man of Mode</i>	David Mamet Caryl Churchill Ron Cameron & Company Lillian Hellman George Farquhar George Etherege	Duncan McIntosh and Zaib Shaikh Ron Cameron Jane Carnwath Mimi Mekler Patrick Young
2002/2003	<i>The Aberhart Summer</i> <i>Brass Buttons &amp; Silver Horseshoes</i> <i>Les Liaisons Dangereuses</i> <i>Les Belles-Soeurs</i> <i>'Tis Pity She's a Whore</i>	Conni Massing / Alan Powe Linda Granfield / Company Christopher Hampton Michel Tremblay John Ford	Katherine Kaszas Mimi Mekler Patrick Young Vinetta Strombergs Greg Peterson
2003/2004	<i>The Libation Bearers</i> <i>The Golden Ass</i> <i>The Vic</i>	Aeschylus / Tony Harrison Apuleius / Company Leanna Brodie	Heinar Piller Cameron-Lewis & Frid Rebecca Brown

Amber Archbell, Jan Munroe, Kathryn Phillips, Tom Schweitzer, Barbara McLean Wright.....	
	<i>Stage Managers</i>
Bruce Barton (Executive Producer, Acting UTM Coordinator).....	<i>Drama Studies</i>
Anthony Bastianon & Denise Oucharek.....	<i>Singing, Music Direction</i>
Roger Beck.....	<i>Professor Emeritus, UTM</i>
Suzanne Bennett.....	<i>Tutorials</i>
Nancy Bowe.....	<i>Wardrobe Assistants</i>
Sarah Jane Burton.....	<i>Movement &amp; Dance; Choreographer</i>
Ron Cameron-Lewis.....	<i>Styles; Professor Emeritus, Sheridan</i>
Nancy Copeland (on leave).....	<i>Drama Studies</i>
Teodoro Dragonieri.....	<i>Character Mask</i>
Laurence Follows.....	<i>Tutorials, Acting Technique, Styles</i>
Merrylee Greenan.....	<i>Assistant to the Chair, UTM English &amp; Drama</i>
Pil Hansen.....	<i>Drama Studies</i>
Dennis Hayes.....	<i>Stagecraft</i>
Melee Hutton.....	<i>Guest Director</i>
Robert Kennedy.....	<i>Tutorials</i>
Daniel Levinson.....	<i>Stage Combat; Fight Direction</i>
Edward (Ned) Loach.....	<i>Assistant to the Associate Dean, Sheridan Visual &amp; Performing Arts</i>
Joanne Massingham (Head of Wardrobe).....	<i>Stagecraft, Production; Costumer</i>
David Matheson.....	<i>Scene Study, Styles, Tutorials; Director</i>
Debra McKay.....	<i>Theatre Organization, Stage Management</i>
Catherine McNally.....	<i>Tutorials</i>
Mimi Mekler.....	<i>Clown</i>
Denise Norman.....	<i>Voice and Text, Production, Tutorials</i>
Chantal Panning.....	<i>Box Office</i>
Martin Revermann.....	<i>Drama Studies</i>
Heinar Piller.....	<i>Guest Director</i>
Marc Richard.....	<i>Movement</i>
Dianne Robertson.....	<i>Undergraduate Advisor, UTM English &amp; Drama</i>
Ed Sahely.....	<i>Improvisation</i>
Meredith Scott.....	<i>Voice &amp; Text, Production</i>
Sarah Scroggie (Head of Properties & Scenic Art).....	<i>Stagecraft, Production</i>
Jim Smagata (Technical Director, Erindale Studio Theatre).....	<i>Stagecraft, Production; Lighting Design</i>
Ralph Small.....	<i>Tutorials, Styles; Guest Director</i>
Grace Smith.....	<i>Drama Studies</i>
Tracy Smith.....	<i>Program Support Officer, Sheridan Visual &amp; Performing Arts</i>
Lawrence Switzky.....	<i>Drama Studies</i>
Holger Syme (Chair, UTM English & Drama).....	<i>Drama Studies</i>
Joseph Taylor (Technical Director, MiST).....	<i>Production</i>
Peter Urbanek (Manager of Theatre Operations).....	<i>Stagecraft, Production; Set Design</i>
Matt White.....	<i>Tutorials</i>
Aaron Willis.....	<i>Guest Director</i>
Timothy Youker.....	<i>Drama Studies</i>
Patrick Young (Artistic Director, Sheridan Coordinator).....	<i>Scene Study, Professional Practice; Director</i>

•

Rosemary Dunsmore, Andy McKim, Nicole Stamp, Terry Tweed.....	<i>Guest Artists</i>
Neil Silcox ( <i>Chair</i> ), Roger Beck, Tracey Geobey, Paula Gonsalves, Katherine Kaszas, Heinar Piller, Jenny Salisbury, Nicole St. Martin, Matt White.....	<i>Advisory Committee</i>
Michael Rubino.....	<i>Associate Dean, Department of Visual and Performing Arts, Sheridan</i>
Holger Syme.....	<i>Chair, Department of English and Drama, UTM</i>
Ronni Rosenberg.....	<i>Dean, Faculty of Animation, Arts and Design, Sheridan</i>
Amy Mullin.....	<i>Dean and Vice Principal Academic, UTM</i>

## From the Director ...

*If that the heavens do not their visible spirits  
Send quickly down to tame these vile offences,  
It will come,  
Humanity must perforce prey on itself,  
Like monsters of the deep.*

Upon re-reading *The Crucible*, the above quote from *King Lear* sprang into my mind, and has been resonating with me through the rehearsal process.

The play sits in a strange hybrid of eras – though set in 1692 Salem, it is still a play of the 1950's. And though it was originally a response to the madness of the Communist witch-hunts of the time, it speaks to every instance where rigid and frightened humans use all the power at their disposal to save themselves from the forces of darkness they perceive encroaching upon them.

In 1692 Salem, the presence of witches meant the end of civilization – no less than the presence of Communists in America in the 1950s. The town of Salem became a battleground, where the leaders of the society were convinced they fought a war to save the people's souls. But it was a war against an invisible enemy – in many ways a war against their own imaginations, against their own terror, and the village preys upon itself trying to make the invisible visible ... hunting down evidence of demonic allegiances at all costs - until too many innocent people lose their lives.

Miller's impulse to write the play came from his own experience, living in the midst of such hysteria. And perhaps the universal resonance of the piece comes from the question that he was faced with – the same question all people who live in times when society goes collectively insane are faced with:

“What will I do if I'm called out before the court? Will I confess to signing my name in the Devil's book? Will I name names? Or will I maintain my integrity though it cost me my life?”

- Aaron Willis

## About the Author and the Play...



"Miller  
in the 1950s"

### ARTHUR MILLER (1915-2005)

The significance of Arthur Miller's legacy to the American theatre is difficult to overstate. Born in New York City in 1915, Miller studied literature at the University of Michigan. His first major work, *All My Sons*, garnered him the Tony Award for Best Author in 1947. Two years later, *Death of a Salesman* earned the same honour, in addition to the New York Drama Circle Critic's Award and the Pulitzer Prize for Drama. It was the first play ever to win all three and cemented Miller as the pre-eminent playwright of his generation. However, in hindsight these

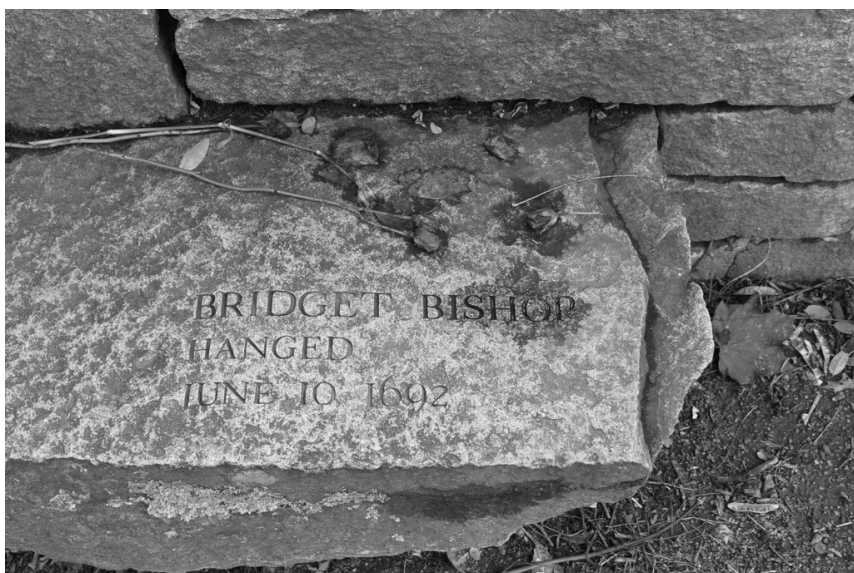
achievements are dwarfed by the astounding impact of Miller's retelling of the Salem Witch Trials of 1692, *The Crucible*.

In 1952, McCarthyism and the “red-scare” reached a fever pitch in the United States. The House Committee on Un-American Activities had the authority to question, investigate, detain and imprison any American citizen who was suspected of any Communist collaboration or involvement. Many of Miller’s own colleagues and friends, including legendary director Elia Kazan and playwright Clifford Odets, were brought before the committee to testify, to name names. In fact it was the testimony of Elia Kazan, and the eight names of prominent artists he gave, which inspired Miller to begin research on what would become *The Crucible*.

The play premiered in 1953 at the Beck Theatre in New York City, and compared to Miller’s earlier works was received poorly. It ran for only half the performances of *Death of a Salesman* and was widely perceived as an open attack on McCarthyism. A perception that was difficult to dispute after the cast of the original production observed a moment of silence for the executions of Julius and Ethel Rosenberg. Miller himself was brought before the House Committee in 1953 to answer for his “un-American” leanings.

To read *The Crucible* only as an allegory for McCarthyism is reductionist. The play has gone on to become Miller’s most widely produced and published work, and continues to be performed with startling regularity on stages across the world. This speaks to a play that is perhaps neither exclusively of its time nor of history, but one that speaks to a familiar human tendency for hysteria, fear and blame-mongering. A crucible is a melting pot, a place of extreme heat; it may also mean a significant test or trial. Whatever the interpretation, it is impossible to argue that the play, much like the author behind it, is one that asks difficult questions and demands thoughtful conclusions.

- Ben Hayward



## ☞ Friends of Theatre Erindale ☛

Our heartfelt thanks to the following generous individuals and organizations who are committed to supporting education in the arts and the future stars of Canadian theatre. Their donations sponsor student scholarships, production materials and equipment, capital projects, and guest artists.

<b>Angels</b> (\$5000 plus)	The Estate of Arthur L. Fernie	
<b>VIPs</b> (\$1000 - \$4999)	Roger & Janet Beck Nancy Copeland	
<b>Boosters</b> (\$500 - \$999)	Patrick Young	
<b>Fans</b> (\$200 - \$499)	Ian Young Dr. & Mrs. Gordon Murphy Wendy & Thom Séguin Kevin Smith Leslie Thomson	
<b>Patrons</b> (\$50 - \$199)	Sarah Jane Burton Ron Cameron-Lewis Geoff Dunlop Denise Norman Peter Silcox Joe & Lia Veit	Ron & Lloyd Cameron-Lewis Christopher Carlton Barbara Michasiw Catherine Rubincam Ralph Small
<b>Donors</b> (\$25 - \$49)	Ed & Mary Bajus John Beamish/Valerie Dobson Chris Dunning Arlene Jones Robert & Audrey Lang Jane Moon Kenneth & Cheryl Sloan	

Contact Tara Verma, Coordinator, UTM Office of Advancement ([tara.verma@utoronto.ca](mailto:tara.verma@utoronto.ca) 905-828-5214) or Jennifer Deighton, Manager, Sheridan Office of Advancement ([jennifer.deighton@sheridancollege.ca](mailto:jennifer.deighton@sheridancollege.ca) 905-845-9430 ext. 4032).



### *Special Thanks to*

Theatre Orangeville, Theatre Sheridan, Theatre Aquarius,  
Robert Gill Theatre, Linda Phillips  
Canadian Actors' Equity Association

### PETER URBANEK (Manager of Theatre Operations)

This is Peter's fourteenth season at Theatre Erindale. For the past thirty-five years he has worked in theatres across the country. His past credits include Production Manager for: Magnus Theatre, The University of Western Ontario, Markham Theatre and the Globe Theatre. Peter has over four hundred lighting and set design credits. He has worked with such companies as Mountain Dance Troupe, Vancouver Playhouse, National Ballet, Canadian Opera Company, Taffelmusik, Les Grande Ballets Canadien, Stageright Productions, Fanshawe College, Alberta Ballet Company, and Jaberwocky Theatre for Children. He was Production Manager, taught set/lighting design for eight years at the University of Western Ontario. For Theatre Safety Consultants he inspected and consulted on over four hundred theatre projects and was theatre consultant for Fanshawe College's Live Performance Industry facility. Peter's movie and television work includes, *The Bridge to Silence* with Lee Remick and Marlee Matlin, *The Super Dave Show*, *Raffi In Concert*, *Diamonds*, and *X-Men: The Movie*.

### JOANNE MASSINGHAM (Head of Wardrobe, Costumer)

Joanne is pleased to be returning for her nineteenth season at Theatre Erindale. Unlike the people she is surrounded by, she has never set foot on a stage when there are audience members in attendance and is happy living in the wings. She is however, always in awe of those who have the courage to step into the lights. Some costume design credits for Theatre Erindale include *The Hypochondriac*, *Lovers in Dangerous Times*, *A Midsummer Night's Dream*, *Hot L Baltimore*, *The Revenger's Tragedy*, *Gut Girls*, *7 Stories*, *Les Belles-Soeurs* and *The Relapse*. She has also designed costumes for *My Fair Lady* and *The Buddy Holly Story* (Stage West), and set and costumes for Artemis Theatre's acclaimed 1998 production of Charles Dickens reading from *A Christmas Carol* (Theatre Passe Muraille). She has been Head of Wardrobe for numerous Theatre Companies including Theatre Sheridan, *Le Théâtre Français de Toronto*, Young Peoples' Theatre, U of T Opera School, York University, Theatre Passe Muraille and Skylight Theatre.

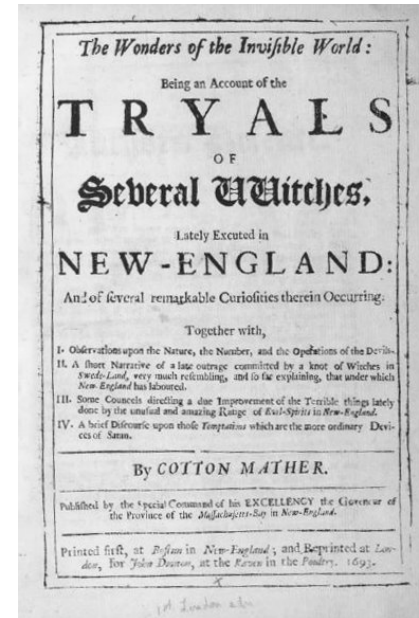
### JAMES W. SMAGATA (Technical Director, Lighting Design)

Jim's passion for theatre began in Grade 7 when he was cast as Major-General Stanley in *The Pirates of Penzance*. He has performed lead roles in *Our Town* and *Bus Stop*. Before Jim graduated from Brock University, he acted in several drama department shows, including a 1950's Old West version of Molière's *Tartuffe*. Jim changed horses in the stream and focused on Technical roles, for Rainbow Troupe, Technical Coordinator at Brock, Technical Manager at Grande Prairie Regional College in Alberta, Chief of Production Services at Nepean Centrepointe Theatre, and now Technical Director at UTM. In Alberta he directed a few shows: *The Gin Game*, *Portrait in Black*, *The Creature Creeps!*, *Little Shop of Horrors*, performed as Gandalf in the musical *The Hobbit*, and Mike in Jim Betts' musical *Thin Ice*. In 1995, he directed and performed in the Drama Club's production of *Pump Boys and Dinettes*. He was Technical Director and Lighting Designer for the 2001 Mississauga Arts Council Awards, and worked as a sound technician at the Shaw Festival. Jim spends his "spare time" as a post-production sound engineer and voice actor for several web-based audio drama companies.

### SCENE SYNOPSIS

*The play is set in Salem, Massachusetts, in 1692*

- ACT I:** *Spring.*  
*An upper bedroom in the home of Reverend Parris.*
- ACT II:** *Evening, eight days later.*  
*The common room of the Proctor farmhouse.*
- 15-minute Intermission —
- ACT III:** *About two weeks later.*  
*The vestry room of the Salem Meeting House, now serving as the anteroom of the General Court.*
- ACT IV:** *That fall.*  
*A cell in Salem jail, before dawn.*



# The Crucible

by Arthur Miller

Directed by Aaron Willis\*

Set by Peter Urbanek

Costumes by Joanne Massingham

Lighting by James W. Smagata

Original Music by Anthony Bastianon

Stage Management by Thomas Schweitzer\*

## THE CAST

(in order of first appearance):

REVEREND PARRIS .....	Nicholas Potter
BETTY PARRIS .....	April Leung
TITUBA .....	Chiamaka G. Ugwu
ABIGAIL WILLIAMS .....	Megan O'Kelly
SUSANNA WALCOTT .....	Cornelia Audrey
MRS. ANN PUTNAM .....	Natasha Ramondino
THOMAS PUTNAM .....	Evan Williams
MERCY LEWIS .....	Claire Sherwood
MARY WARREN .....	Eliza Martin
JOHN PROCTOR .....	Christian Tribuzio
REBECCA NURSE .....	Bailey Green
GILES COREY .....	Wes Payne
REVEREND JOHN HALE .....	Adrian Beattie
ELIZABETH PROCTOR .....	Kaitlyn Alexander
FRANCIS NURSE .....	Mark Snetzko
EZEKIEL CHEEVER .....	Brian Postalian
MARSHAL HERRICK .....	Gevvy Sidhu
MARTHA COREY .....	Alex Spyropoulos
JUDGE HATHORNE .....	Mark Palinski
DEPUTY GOVERNOR DANFORTH .....	Victor Pokinko
SARAH GOOD .....	Alex Spyropoulos
HOPKINS .....	Mark Snetzko
Additional roles played by members of the Company	

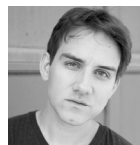
Fight Captain .....	Bailey Green
Music Captain .....	Victor Pokinko
Assistant Stage Managers.....	Nathaniel Kinghan, Emma Robson, Marryl Smith

Please turn cell phones, pagers and watch alarms completely off.

Photographs and recordings are strictly prohibited.

We regret that, out of consideration for both the audience and the performers, latecomers and re-entries are not permitted.

## Direction...

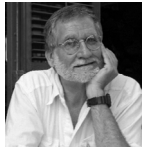


**AARON WILLIS (Director)** is an actor, director, educator, and co-founding artistic director of Convergence Theatre (with Julie Tepperman). **Directing:** *Passion Play* (Convergence/Outside the March/Sheep No Wool), *Miss Caledonia* (Tarragon Theatre), *When The Ice Breaks* (Down n Out Productions/Campbell House Museum), *Other People* (Mutual Friends Co-op), YICHUD (*Seclusion*) (Theatre

Passe Muraille/Convergence Theatre, *The Gladstone Variations – The Tearful Bride* (Convergence Theatre, Dora nomination), *AutoShow* (Convergence Theatre/Toronto Fringe 2006). **Acting:** *Murderers Confess At Christmastime* (Outside the March/Summerworks 2013), YICHUD (*Seclusion*) (Theatre Passe Muraille/ Convergence), *The Incredible Speediness of Jamie Cavanaugh* (Roseneath Theatre), *Zadie's Shoes* (GTC), *Abattoir* (Kaeja d'Dance/Harbourfront Centre), *The Russian Play* (Factory Theatre), *Wrecked* (Roseneath; Dora Nomination – Best Performance TYA); *The Merchant of Venice* (Shakespeare in the Rough), *(nod)* (Theatre Gargantua), *Waiting for Lefty and Awake and Sing* (The CO.), *Well*, (Tarragon Theatre), **Film/TV:** *Flashpoint*. **Other:** Assistant Director on *EVITA* (2010) and *Much Ado About Nothing* (2012) at the Stratford Festival's Michael Langham Workshop for Classical Theatre Direction. Aaron is part of the core producing team of Toronto's Wrecking Ball, has a BA Honours in Drama from the University of Alberta and is a graduate of George Brown Theatre School.

**PATRICK YOUNG (Artistic Director, Set Design)** graduated in English from Victoria College, University of Toronto, trained in Theatre on a graduate scholarship at Indiana University, and was soon a well-known actor across Canada. His Toronto credits included the record-breaking hits *Flicks*, *The Relapse*, and the original production of *Automatic Pilot*, as well as *Chinchilla* and the last national tour of *Spring Thaw*. Elsewhere the range included *Misalliance* and *Threepenny Opera* in Boston, *Uncle Vanya* and *Tobacco Road* in Indiana, *Windsor* in Charlottetown, *Dames at Sea* in Winnipeg, *Hay Fever* across BC and *Scapin* across Ontario, plus guest starring on such TV series as *The Great Detective* and *Night Heat*. During the 1980s, he branched into playwriting, directing, and teaching. He is the author of the award-winning biographical plays "*Winnie*" (also filmed for television), *Aimee!*, and *Abigail, or The Gold Medal*, plus numerous industrial shows. He has held the posts of Artistic Director of Dalhousie Theatre Productions in Halifax, Director/ Dramaturg of the Music Theatre Writers' Colony at the Muskoka Festival, and Associate Director/Playwright in Residence at the Lighthouse Festival Theatre. Teaching includes Waterloo, Dalhousie, George Brown, Humber, and Gaya College in Malaysia. He is the founding Artistic Director of Theatre Erindale and the founding Sheridan Coordinator of the Theatre and Drama Studies Program (which is now in its twenty-third year). For Theatre Erindale he has directed seventeen plays and designed or adapted several more; for Theatre Sheridan two; and credits elsewhere include the second production of *Midnight Madness*, the World Première of *The Growing Season*, *The Shadow Box*, *The Crucible*, *Mandragola*, *Split*, *Cheek to Cheek*, *You Can't Take it With You*, *Waiting for the Parade*, and more new play workshops than he can count.

## Stage Management...



### THOMAS SCHWEITZER (Stage Manager)

Born and raised in Kitchener Waterloo, Tom earned a bachelor of music degree from the University of Toronto, and is a graduate of The American Academy of Dramatic Arts (New York). Tom was Director of Production for Opera Ontario (Opera Hamilton) from 1990-2006. He has worked as stage manager for many companies across Canada, including the Royal Winnipeg Ballet, the Stratford Festival, the National Arts Centre (Ottawa), Bastion Theatre (Victoria BC), Rainbow Stage (Winnipeg) and the Toronto Symphony. He also directed and designed productions for community theatres throughout Ontario, Opera Piccola (Victoria BC) and Muskoka Summer Theatre. And for fourteen years, he directed and designed opera productions at Wilfred Laurier University (Waterloo).



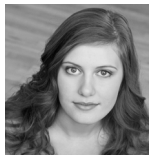
**NATHANIEL KINGHAN**, 2nd Year - Theatre and Drama Studies **Home Town:** Richmond Hill, ON **Other Companies:** Gus, Augustus - *Coverly- Arcadia* (UTM Drama Club); Jean Fournier - *The December Man* (The Curtain Club); Brian - *The Shadow Box* (RHHS) **Favourite Saying:** "It's the best possible time to be alive, when almost everything you thought you knew

is wrong" - Arcadia



**MARRYL SMITH**, 2nd year - Theatre and Drama Studies **Home Town:** Kitchener, ON **Beck Festival:** Della - *The Best for Della* **Other Companies:** Doctor Foster - *Bruised Porcelaine* (UofT Drama Festival); Honey - *Who's Afraid of Virginia Woolf?* (Synchro Theatre); Peter - *Romeo and Juliet* (Lost and Found Theatre) **Ambition:** To learn and grow in this program to reach

the level of talent and professionalism displayed by the fourth year class I am working with.



**EMMA ROBSON**, 2nd year, Theatre and Drama Studies **Home Town:** Toronto, ON **Other Training:** Randolph Academy for the Performing Arts, Toronto Youth Theatre, Bishop Strachan School **For Beck Festival:** Lighting and Sound - *The Best for Della* **For Other Companies:** Director - *The Fantasticks* (Bishop Strachan School); Ilse - *Spring*

*Awakening* (Toronto Youth Theatre); Rosemary, Dance Captain - *How to Succeed in Business Without Really Trying* (Toronto Youth Theatre) **Favourite Saying:** "If I cannot fly, let me sing." - Stephen Sondheim

## FOR THE CRUCIBLE

Speech & Dialect Coach	Denise Norman
Movement Coach	Sarah Jane Burton
Fight Coach	Daniel Levinson
Lighting Operator	Connor Dutchak
Sound Operator	Roxhane Norman
Set Crew	Malindi Ayienga, Hershel Blatt, Jack Comerford, Victoria Dennis, Shawn Doyle, Alessa Dufresne, Sarah Kern, Avery Logan, Katherine McDonald, Johnathan Muench, Thin (Tan) Nguyen, Tatiana Stewart-Hass, Nathaniel Voll, Kyra Weichert
Properties & Paint Crew	Dominique Corsino, Gabriel Golin, Grzegorz (Gregory) Guzik, Kira Meyers-Guiden, Colette Fitzgerald, Chelsea Riesz Caleb Harwood, Sarah Hime, Brett Houghton, Bryn Kennedy
Wardrobe Crew	Larissa Crawley, Isaac Giles, Zane O'Connor, Marissa Otto, Giovanna Pandullo, Alma Sarai
Make-up and Hair Consultant	Samantha Miller-Vidal
Poster Design	Jim Smagata
Front of House Crew Chief	Stuart Hefford

## FOR THEATRE ERINDALE

Artistic Director	Patrick Young
Executive Producer	Nancy Copeland
Manager of Theatre Operations	Peter Urbanek
Technical Director	James W. Smagata
Head of Wardrobe	Joanne Massingham
Wardrobe Assistant	Nancy Bowe
Head of Properties and Scenic Art	Sarah Scroggie
Stage Carpenter	Joseph Taylor
Production Assistants	David Allan, Courtney Keir, Nathaniel Kinghan, Roxanne Norman, Brian Postalian, Chiamaka Ugwu
Business Manager	Rob Eberts
Box Office Manager	Chantal Panning
Box Office Staff	Daniela Boyaninska, Elsie Ikhariale, Daphne Liu, Precious Sidambe
Program	Merrylee Greenan
Brochure, Season Poster and Program Cover Design	Alison Dias

\* Courtesy of Canadian Actors' Equity Association

*The Crucible* is produced by special arrangement with Dramatists Play Service.



## 2013/2014 HART HOUSE THEATRE SEASON



### BONE CAGE

Sept. 20–Oct. 5



### THE WEDDING SINGER

Jan. 10–25



### TWELFTH NIGHT

Nov. 6–23



### GOODNIGHT DESDEMONA (GOOD MORNING JULIET)

Feb. 28–Mar. 8

Box Office:  
www.uofttix.ca  
or 416.978.8849  
Adults: \$28  
Seniors: \$17  
Students: \$15

**HartHouse** For more info on shows and subscriptions, visit: [www.harthousetheatre.ca](http://www.harthousetheatre.ca)

Please pardon our appearance during construction. It will all be over by September 2014, when Theatre Erindale will have its first purpose-built rehearsal halls to work in!

If you have any questions or comments regarding your experience please contact:

Peter Urbanek  
Manager of Theatre Operations  
Department of English and Drama, University of Toronto Mississauga  
3359 Mississauga Road North, Rm 290A NB  
Mississauga, ON L5L 1C6

905-569-4739 Voice, 905-828-5202 FAX  
email: [p.urbanek@utoronto.ca](mailto:p.urbanek@utoronto.ca)



**CHIAMAKA G. UGWU**, 4th Year - Theatre and Drama Studies  
**Home Town:** Toronto, ON **For Theatre Erindale:** *Weird Sister - Macbeth*; *Sophie - In the Midst of Alarms* **Beck Festival:** Assistant Stage Manager - *Untitled: The Musical* **Other Companies:** *Diet - How I Lost One Pound: The Musical* (Toy Box Productions); *Mama B - Distances Between Us* (rock.paper.sistahs); Director - *Snow Burns* (Newborn Theatre) **Favourite Saying:** "Wings are a constraint that makes it possible to fly." - Robert Bringhurst

**EVAN WILLIAMS**, 4th Year - Theatre and Drama Studies  
**Home Town:** Calgary, AB **Other Training:** Castleton Artists Training Seminar, Merriam School of Music, Oakville Improv **For Theatre Erindale:** Theseus, Fairy - *Midsummer Night's Dream*; Billy Henderson, Benjamin Taylor - *In the Midst of Alarms*; Lighting Operator - *Stage Door*; Sound Operator - *Nicholas Nickleby*; Wardrobe Crew - *Child of Survivors* **Other Companies:** Frid - *A Little Night Music*; Sancho Panza - *Master Pedro's Puppet Show* (The Castleton Festival); Mark - *Trail of Embrace* (U of T Drama Fest); Ernie Cusack - *Rumors*; Smirnov - *The Boor* (Mentor College) **Favourite Saying:** "Knowledge is knowing tomato is a fruit; wisdom is not putting it in a fruit salad." - Miles Kington

## A Special Offer

(EXCLUSIVELY for ticket holders of *The Crucible*!)

Simply turn in your ticket stub at the Box Office before the end of the run, pay the difference, and  
**GET A COMPLETE THEATRE ERINDALE MEMBERSHIP FOR 2013/2014!**

### *Take advantage of:*

- Five shows for the price of four – a 20% discount!
- Guaranteed seats!
- Exchange privileges!
- Additional tickets at Membership prices!
- FREE tickets to *The Beck Festival* December 12-14, 2013!
- And, of course, Theatre Erindale's undying gratitude!



**CLAIRE SHERWOOD**, 4th Year - Theatre and Drama Studies

**Home Town:** Toronto, ON **For Theatre Erindale:** Hecate, Seyton - *Macbeth*; Mrs. Morris, Elizabeth - *In the Midst of Alarms*; Acting Assistant Stage Manager, Wardrobe Crew Chief - *Our Country's Good*; Wardrobe - *The Clandestine Marriage* **Other Companies:** Kagome - *Pieces of People*; Hannah Douglas - *I.D.*; Tommy - *Torn Down Still Standing* (Circle Playhouse) **Favourite Saying:** "Let's face it: we are all inadequate. Yet, even knowing that, we are also capable of surpassing all the expectations, limits, and negativity that plague us. It is up to us to rise to the occasion and inspire others to do the same." - Kaysey Davis.

**GEVVY SIDHU**, 4th Year - Theatre and Drama Studies

**Home Town:** Brampton, ON **Other Training:** Souleppper Theatre, Rapier Wit - Basic Actor Combatant **For Theatre Erindale:** Donalbain, Murderer 2, Old Siward - *Macbeth*; Company - *In the Midst of Alarms*; Assistant Stage Manager - *Stage Door*; Running Crew - *Nicholas Nickleby*; Set Crew - *The Winter's Tale*; Set Crew - *The Women and Witches and Bitches*; Wardrobe - *Jane Eyre* **Beck Festival:** Stage Manager - *Ashes to Ashes* **Other Companies:** Writer, Performer - *Twilight Soldier* (U of T Drama Festival) **Favourite Saying:** "...to go one's own way in life and work unerringly, neither depressed by failure nor seduced by applause." - Gustav Mahler

**MARK SNETZKO**, 4th Year - Theatre and Drama Studies

**Home Town:** Yonkers, NY **For Theatre Erindale:** Tom Snout the Tinker - *Midsummer Night's Dream*; Company - *In the Midst of Alarms* **Other Companies:** Stew - *Trail of Embrace* (UTM Drama Club); Ichabod Crane - *The Legend of Sleepy Hollow*; Guy, Hank, Dewey, Lyle - *Check Please Take 2* (Theatre Centre Wellington)

**ALEX SPYROPOULOS**, 4th Year, Theatre and Drama Studies

**Home Town:** Oakville, ON **For Theatre Erindale:** Witch 1, Porter - *Macbeth*; Susan, Elizabeth - *In The Midst of Alarms* **Beck Festival:** Woman 2 - *Phillip Glass Buys a Loaf of Bread* **Other Companies:** Mistress Quickly - *The Merry Wives of Windsor* (Bard in the Park); Linda and Jason, Nurse 2 - *We Can Change Your Bandages* (Coffee House Theatre) **Favourite Saying:** "Never be afraid to laugh at yourself, after all, you could be missing out on the joke of the century." - Joan Rivers

**CHRISTIAN TRIBUZIO**, 4th Year - Theatre and Drama Studies

**Home Town:** King City, ON **For Theatre Erindale:** Banquo - *Macbeth*; Lt. Francis Cockburn - *In the Midst of Alarms* **Beck Festival:** Antin, Playwright - *The Best for Della* **Other Companies:** Alan Walsh - *Days Like These* (U of T Drama Festival); Lidio - *La Calandria* (LSAS Productions) **Favourite Saying:** "We don't stop playing because we grow old; we grow old because we stop playing." - George Bernard Shaw

## *The Cast . . .*

**KAITLYN ALEXANDER**, 4th Year - Theatre and Drama Studies

**Home Town:** Ottawa, ON **For Theatre Erindale:** Mistress Quince - *Midsummer Night's Dream*; Company - *In the Midst of Alarms*; Assistant Stage Manager - *Stage Door* **Beck Festival:** Narrator - *Untitled!: The Musical* **Other Companies:** Director - *Trail of Embrace*; Playwright - *Bruised Porcelain* (U of T Dramafest) **Favourite Saying:** "Walk really, really carefully. It's not complicated, but if you mess up you'll die, so pay attention." - Maureen Johnson

**CORNELIA AUDREY**, 4th Year - Theatre and Drama Studies

**Home Town:** Niagara-on-the-Lake, ON **For Theatre Erindale:** Courtiers, Moth - *Midsummer Night's Dream*; Company - *In the Midst of Alarms*; Wardrobe Crew Chief - *1917: The Halifax Explosion*; Running Crew - *Our Country's Good* **Other Companies:** Transylvanian - *The Rocky Horror Picture Show* (Port Mansion Theatre); Lucilla - *Anne of Green Gables* (Niagara District S.S.) **Ambition:** To be a respected and credited film actress and to one day open my own production company that produces films that bring needed attention to environmental issues and human injustices in our world. Oh and winning an Oscar would be pretty cool too!

**ADRIAN BEATTIE**, 4th Year - Theatre and Drama Studies

**Home Town:** Oakville, ON **For Theatre Erindale:** Malcolm - *Macbeth*; Samuel Hatt - *In the Midst of Alarms* **Beck Festival:** Phillip Glass - *Phillip Glass Buys a Loaf of Bread* **Other Companies:** Jokanaan - *Salome* (UTM Drama Club) **Favourite Saying:** "I do things like get in a taxi and say, 'The library, and step on it. '"

**BAILEY GREEN**, 4th Year - Theatre and Drama Studies

**Home Town:** Montreal, QC **Other Training:** Professional Theatre Acting DEC (Diploma) from John Abbott College **For Theatre Erindale:** Philostrate, Mustardseed - *Midsummer Night's Dream*; Company - *In the Midst of Alarms* **Beck Festival:** Cleo - *Pearl in a Pink Dress* **Other Companies:** Second Woman - *The Tin Can People*; Ensemble - *The Vagina Monologues* (Diana Productions); Tzeitel - *Fiddler on the Roof*; Gwen Landis - *Fifth of July* (JAC Productions) **Favourite Saying:** "Live the life you've imagined." - Henry David Thoreau

**APRIL LEUNG**, 4th Year - Theatre and Drama Studies

**Home Town:** Hong Kong **Other Training:** Scholarship Recipient, Hong Kong Academy for Performing Arts **For Theatre Erindale:** Snug the Joiner - *Midsummer Night's Dream*; Company - *In the Midst of Alarms*; Front of House Manager - *Nicholas Nickleby*; Assistant Stage Manager - *Goodnight Desdemona (Good Morning Juliet)* **Other Companies:** Vocal Assistant and Performer - *MJ Relived 2*; Rusty - *Footloose* (Hong Kong Academy for the Performing Arts); Silly Girl - *Beauty and the Beast* (Hong Kong Singers) **Favourite Saying:** "If you have good thoughts, they will shine out of your face like sunbeams and you will always look lovely." - Roald Dahl

**ELIZA MARTIN**, 4th Year - Theatre and Drama Studies

**Home Town:** Toronto, ON **For Theatre Erindale:** Lady Macduff, Fleance - *Macbeth*; Emily, Maria - *In the Midst of Alarms* **Other Companies:** Rapunzel - *Into the Woods* (Toronto Youth Theatre); u/s Louise - *Gypsy* (Hangar Theatre); Patricia - *Hiding Like Elephants*; Emily - *Bodies* (Hangar Theatre Wedge Series) **Favourite Saying:** "The future belongs to those who believe in the beauty of their dreams." - Eleanor Roosevelt

**MEGAN O'KELLY**, 4th Year - Theatre and Drama Studies

**Home Town:** Oakville, ON **Other Training:** Performing Arts Preparation at Sheridan College **For Theatre Erindale:** Robin Starveling the Tailor - *Midsummer Night's Dream*; Company - *In the Midst of Alarms*; Assistant Stage Manager - *1917: The Halifax Explosion* **Other Companies:** Arya Stark - *Thrones & Recreation* (Queens Players Toronto); Amy - *How I Lost One Pound - The Musical* (The Toronto Fringe Festival) **Favourite Saying:** "Life moves pretty fast. You don't stop to look around once in a while, you could miss it!" - Ferris Bueller

**MARK PALINSKI**, 4th Year - Theatre and Drama Studies

**Home Town:** Mississauga, ON **For Theatre Erindale:** Ross - *Macbeth*; Company - *In the Midst of Alarms*; Wardrobe - *Our Country's Good*; **Other Companies:** Siward, Captain, Doctor - *Macbeth* (Ale House Theatre Company); Ben - *The Trail of Embrace* (U of T Drama Festival) Bogdan - *Mad Forest* (Cawthra Park Secondary School) **Ambition:** To reach a point, level, height...and surpass it.

**WES PAYNE**, 4th Year - Theatre and Drama Studies

**Home Town:** Caledon, ON **Other Training:** Mayfield Secondary School Drama Program, The Brampton Theatre School **For Theatre Erindale:** Puck - *Midsummer Night's Dream*; Company - *In the Midst of Alarms*; Assistant Stage Manager - *Nicholas Nickleby*; Soundboard Operator - *Stage Door*; Wardrobe Crew - *The Winter's Tale*; Props Crew - *Jane Eyre* **Beck Festival:** Stage Manager - *Identity Crisis*; Stage Manager - *Cherry Docs* **Other Companies:** Riff Raff - *The Rocky Horror Show* (Theatre Alive); Stage Manager - *December 1917* (Well Fought Theatre Company); Enjolras - *Les Misérables* (The Brampton Theatre School) **Favourite Saying:** "Our truest life is when we are in dreams awake." - Henry David Thoreau

**VICTOR POKINKO**, 4th Year - Theatre and Drama Studies **Home**

**Town:** Ottawa, ON **Other Training:** Shakespeare -The Wylde Project **For Theatre Erindale:** Charles de Salaberry - *In the Midst of Alarms*; Demetrius - *Midsummer Night's Dream*; Tix/Heatherington - *Nicholas Nickleby* **Beck Festival:** Baker - *Philip Glass Buys a Loaf of Bread*; Villain - *Untitled: The Musical* **Other Companies:** Clinton - *Fort Isabel* (Toronto Fringe); Giovanni - *'Tis Pity She's a Whore*; Silvius, Adam - *As You Like It* (Bear & Company); Alan/Bob, Clive - *No Power Greater* (Dramamuse) **Favourite Saying:** "It is a mistake to think you can solve any major problem just with potatoes"

**BRIAN POSTALIAN**, 4th Year - Theatre and Drama Studies

**Home Town:** Toronto, ON **Other Training:** Toronto Youth Theatre's The Soloist Masterclass **For Theatre Erindale:** Francis Flute - *Midsummer Night's Dream*; James Secord - *In the Midst of Alarms*; Assistant Stage Manager - *Goodnight Desdemona (Good Morning Juliet)* **Beck Festival:** Director - *Philip Glass Buys a Loaf of Bread* **Other Companies:** Attache, Amphitheus - *Lysistrata - The Sex Strike* (Canopy Theatre Company); Ensemble - *Shakespeare on the Subway* (Spur-of-the-Moment Shakespeare); Assistant Director - *Of A Monstrous Child: A Gaga Musical* (Buddies in Bad Times/ Ecce Homo Theatre) **Favourite Saying:** "If at first you don't succeed, failure may be your style" - Quentin Crisp

**NICHOLAS POTTER**: 4th Year - Theatre and Drama Studies

**Home Town:** Oakville, ON **For Theatre Erindale:** King Duncan, Murderer 1, Doctor - *Macbeth*; Thomas Verchères - *In the Midst of Alarms*; Jennings, Pyke, Scaley, Old Lord - *Nicholas Nickleby* **Beck Festival:** Boy - *Open Book*; Writer, Sound Designer - *Pearl in a Pink Dress* **Other Companies:** Director, Sound Designer - *(Don't Splash) Shelley Rae* (Toronto Fringe Festival); Sound Designer - *A False Face* (Vancouver Fringe Festival); Writer, Sound Designer - *Marianne, Are You Asleep?* (U of T Drama Festival) **Favourite Saying:** "I...am...grate...ful...grape...fruit!"

**NATASHA RAMONDINO**, 4th Year - Theatre and Drama Studies

**Home Town:** Oakville, ON **Other Training:** West End Studio Theatre, The Oakville Academy for the Arts **For Theatre Erindale:** Courtiers, Peaseblossom - *Midsummer Night's Dream*; Company - *In the Midst of Alarms*; Props Crew Chief - *Stage Door*; Props Crew Chief - *Our Country's Good*; Wardrobe Crew Chief - *1917: The Halifax Explosion* **Other Companies:** Director - *Days Like These* (U of T Drama Festival); Transylvanian - *The Rocky Horror Show* (Theatre Alive) **Favourite Saying:** "No one can make you feel inferior without your consent." - Eleanor Roosevelt