

Year	Title	Author	Director
2006/2007	<i>Radium Girls</i> <i>Canadian Kings of Repertoire</i> <i>Waiting for the Parade</i> <i>The Maid's Tragedy</i> <i>A Chaste Maid in Cheapside</i>	D. W. Gregory Michael V. Taylor / Company John Murrell Beaumont & Fletcher Thomas Middleton	Ralph Small Ron Cameron-Lewis Lezlie Wade Patrick Young Rod Ceballos
2007/2008	<i>David Copperfield</i> <i>Women of the Klondike</i> <i>That Summer</i> <i>Pillars of Society</i> <i>The Trojan Women & Lysistrata</i>	Dickens / Thomas Hischak Frances Backhouse / Company David French Henrik Ibsen Ellen McLaughlin versions	Mimi Mekler Marc Richard Patrick Young Heinar Piller Catherine McNally
2008/2009	<i>A New Life</i> <i>Murderous Women</i> <i>Bonjour, L'À, Bonjour</i> <i>The Taming of the Shrew</i> <i>The Taming of the Tamer</i>	Elmer Rice Frank Jones / Company Michel Tremblay William Shakespeare John Fletcher	Scot Denton Marc Richard Terry Tweed Mimi Mekler Patrick Young
2009/2010	<i>Widows</i> <i>Don't Drink the Water</i> <i>Andromache</i> <i>String of Pearls & The Spot</i> <i>The Clandestine Marriage</i>	Ariel Dorfman Brenda Lee Burke / Company Jean Racine / Richard Wilbur Michele Lowe / Steven Dietz Garrick & Colman	Bill Lane Marc Richard & Suzanne Bennett Patrick Young Ralph Small Peter Van Wart
2010/2011	<i>Jane Eyre</i> <i>Child of Survivors</i> <i>Witches & Bitches</i> <i>The Women</i> <i>The Winter's Tale</i>	Brontë/Robert Johanson Bernice Eisenstein/Company Shakespeare & Friends Clare Boothe Luce William Shakespeare	Scot Denton Ralph Small Kelly Straughan Terry Tweed Mimi Mekler
2011/2012	<i>Nicholas Nickleby Part 1</i> <i>1917: The Halifax Explosion</i> <i>Goodnight Desdemona</i> <i>(Good Morning Juliet)</i> <i>Our Country's Good</i> <i>Stage Door</i>	Dickens/David Edgar Nimbus Pub./Company Anne-Marie MacDonald Timberlake Wertenbaker Ferber & Kaufman	Peter Van Wart & Kevin Bowers Meredith Scott Daniel Levinson Patrick Young Heinar Piller
2012/2013	<i>Semi-Monde</i> <i>In the Midst of Alarms</i> <i>The Farndale Avenue...</i> <i>Production of Macbeth</i> <i>A Midsummer Night's Dream</i> <i>Macbeth</i>	Noël Coward Dianne Graves / Company David McGillivray & Walter Zerlin Jr. William Shakespeare William Shakespeare	Brian McKay Ralph Small Patrick Young Sue Miner David Matheson
2013/2014	<i>The Crucible</i> <i>Rebel Daughter</i> <i>A Stitch in Time</i> <i>The Wifings</i> <i>The Rover</i>	Arthur Miller Doris Anderson/Company Feydeau/Dorothy Lees-Blakey / Brian Blakey Frances Burney Aphra Behn	Aaron Willis Heinar Piller David Matheson Patrick Young Melee Hutton



INSIDE COVER PROGRAM CORRECTIONS
Please note the correct spelling of the following names:
Isaac Giles, Tatiana Haas, Chelsea Riesz

William Inge's
PICNIC

*Kansas, 1953:
a dashing drifter, a beautiful girl,
and the last day of summer ...*

A Theatre Erindale Production
directed by Patrick Young
Jan 22-24; Jan 29-Feb 1, 2015
Thur 7:30, Fri 8:00, Sat 2:00 & 8:00, Sun 2 Mar 2:00 – \$12-\$18
Erindale Studio Theatre
(UTM 3 lights north of Dundas off Mississauga Road)
905-569-4369; theatreerindale.com
This program is available in larger print.

This program is available in larger print.

From the Dean and Vice Principal Academic, University of Toronto Mississauga ...

I am delighted to welcome you to the 23rd season of Theatre Erindale, with a focus on the theme of "Lovers in a Dangerous Time". My congratulations to the students, staff and faculty of the UTM-Sheridan Theatre and Drama Studies Program for providing superlative theatrical productions in an intimate setting that lets us observe the finest nuances of the dramatic art of our performers. Our program combines professional dramatic training with a broad academic perspective, and attracts extremely talented students across Canada and internationally.

As a member of the audience tonight, whether you are a Theatre Erindale Patron or a single ticket purchaser, you are in for a real treat. I know that you'll find this evening at the theatre a testament to the power of plays to stimulate us intellectually and move us emotionally, often generating new insights into life's possibilities. Our plays this season explore connections between love and danger – the dangers lovers face because of their circumstances or because of one another, as well as the disruptive power of love.

– Amy Mullin

From the Artistic Director ...

You can look forward to a lot of 'firsts' in Theatre Erindale's innovative "Lovers in a Dangerous Time" season for 2014-15. For the first time ever, we've ventured into the Spanish Golden Age for a work by Lope de Vega. We're devising two high-concept condensations from his contemporary, William Shakespeare. We've created the world première stage adaptation of the latest sensation from Charlotte Gray. Now we adventure into a modern American classic from William Inge, and go on to mount the Ontario première of a fascinating drama from Nova Scotia's Mary Vingoe. And – tada! – all shows are being rehearsed (and outfitted with props and costumes) in our new production facilities in glorious Deerfield Hall!

Our 'lovers' – broadly interpreted! – play out their stories against a backdrop of imminent danger: from the clan feuds and swordfights of Renaissance Italy, to the jingoism and Victorian mores of old Toronto, to the heat and hormones of small-town Kansas, to the social and economic strife of a dystopian present, to incarceration amid race riots in old New York City. You get not only the Great War, the Trojan War, and the Civil War, but a bonus war that Theatre Erindale never leaves out: the Battle of the Sexes!

Picnic marks my nineteenth production as director and set designer for Theatre Erindale. It also gives us a chance to welcome back Stage Manager Barbara McLean Wright (*A Stitch in Time. Midsummer Night's Dream*).

Theatre Erindale Production History

Year	Title	Author	Director
1993/1994	<i>The Farm Show</i> <i>Pericles, Prince of Tyre</i>	Theatre Passe Muraille William Shakespeare	Patrick Young Mimi Mekler
1994/1995	<i>1837: The Farmers' Revolt</i> <i>Lion in the Streets</i> <i>The Scams of Scapin</i> <i>The Relapse</i>	Theatre Passe Muraille Judith Thompson Molière John Vanbrugh	Terry Tweed Katherine Kaszas Mimi Mekler Patrick Young
1995/1996	<i>Six War Years</i> <i>The Rimers of Eldritch</i> <i>Les Belles-Soeurs</i> <i>The Revenger's Tragedy</i>	Barry Broadfoot / Company Lanford Wilson Michel Trem Cyril Tourneur	Cameron & Frid Jim Millan Mimi Mekler Patrick Young
1996/1997	<i>Story Theatre</i> <i>The Gut Girls</i> <i>7 Stories</i> <i>Mycenae</i> (from <i>The Greeks</i>)	Paul Sills / Grimm Brothers Sarah Daniels Morris Panych John Barton, et al	Mimi Mekler Katherine Kaszas Patrick Young Simon Johnston
1997/1998	<i>A Harvest Yet to Reap</i> <i>The Hot L Baltimore</i> <i>Vital Signs</i> <i>Midsummer Night's Dream</i>	Savage&Wheeler / Company Lanford Wilson Jane Martin William Shakespeare	Mimi Mekler David Ferry Patrick Young Greg Peterson
1998/1999	<i>Lovers in Dangerous Times</i> <i>Fen</i> <i>The Women</i> <i>The Hypochondriac</i>	Shakespeare & Friends Caryl Churchill Clare Boothe Luce Molière / Alan Drury	Ron Cameron Brian Richmond Patricia Hamilton Patrick Young
1999/2000	<i>The Millennium Project</i> <i>Pride's Crossing</i> <i>Lysistrata</i> <i>Hard Times</i>	Dennis Hayes & Company Tina Howe Aristophanes / Rudall Charles Dickens / Jeffreys	Dennis Hayes Brian Richmond Vinetta Strombergs Christina James
2000/2001	<i>Love's Fire</i> <i>Once Upon Our Time</i> <i>The Comedy of Errors</i> <i>En Pièces Détachées</i> <i>All's Well That Ends Well</i>	Bogosian, Finn, Guare, Kushner, Norman, Shange, Wasserstein Dennis Hayes & Company William Shakespeare Michel Tremblay William Shakespeare	Ralph Small Dennis Hayes Ron Cameron Duncan McIntosh Mimi Mekler
2001/2002	<i>Glengarry Glen Ross</i> <i>and Top Girls</i> <i>The Loyalist Project</i> <i>The Children's Hour</i> <i>The Beaux' Stratagem</i> <i>The Man of Mode</i>	David Mamet Caryl Churchill Ron Cameron & Company Lillian Hellman George Farquhar George Etherege	Duncan McIntosh and Zaib Shaikh Ron Cameron Jane Carnwath Mimi Mekler Patrick Young
2002/2003	<i>The Aberhart Summer</i> <i>Brass Buttons & Silver Horseshoes</i> <i>Les Liaisons Dangereuses</i> <i>Les Belles-Soeurs</i> <i>'Tis Pity She's a Whore</i>	Conni Massing / Alan Powe Linda Granfield / Company Christopher Hampton Michel Tremblay John Ford	Katherine Kaszas Mimi Mekler Patrick Young Vinetta Strombergs Greg Peterson
2003/2004	<i>The Libation Bearers</i> <i>The Golden Ass</i> <i>The Vic</i> <i>Pride and Prejudice</i> <i>Jane Eyre</i>	Aeschylus / Tony Harrison Apuleius / Company Leanna Brodie Jane Austen / Christina Calvit Charlotte Brontë / Johanson	Heinar Piller Cameron-Lewis & Frid Rebecca Brown Patrick Young Ralph Small
2004/2005	<i>The Play's the Thing</i> <i>Alarum Within: theatre poems</i> <i>Unity (1918)</i> <i>Women Beware Women</i> <i>Love's Labour's Lost</i>	Skinner, Durang, Frayn Kimmy Beach / Company Kevin Kerr Thomas Middleton William Shakespeare	Paul Brown Ralph Small Patrick Young Sue Miner Heinar Piller
2005/2006	<i>Picnic at Hanging Rock</i> <i>The Immigrant Years</i> <i>Thirteen Hands</i> <i>Constant Players & The Dispute</i> <i>The Country Wife</i>	Lady Lindsay / Shamas Barry Broadfoot / Company Carol Shields / Chris Dawes Marivaux / Watson & Lester William Wycherley	Laurence Follows Alex Fallis Ron Cameron-Lewis Mimi Mekler Patrick Young

Anthony Bastianon & Denise Oucharek.....	<i>Singing, Music Direction</i>
Roger Beck.....	<i>Professor Emeritus, UTM</i>
Suzanne Bennett.....	<i>Tutorials</i>
Justin Blum.....	<i>Drama Studies</i>
Nancy Bowe, Katrina Carrier.....	<i>Wardrobe Assistants</i>
Sarah Jane Burton.....	<i>Movement & Dance; Choreographer</i>
Ron Cameron-Lewis.....	<i>Styles; Professor Emeritus, Sheridan</i>
Nancy Copeland (Executive Producer, UTM Coordinator).....	<i>Drama Studies</i>
Teodoro Dragonieri.....	<i>Character Mask</i>
Sten Eirik.....	<i>Guest Director</i>
Laurence Follows.....	<i>Tutorials, Styles</i>
Merrylee Greenan.....	<i>Assistant to the Chair, UTM English & Drama</i>
Dennis Hayes.....	<i>Stagecraft</i>
Robert Kennedy.....	<i>Tutorials</i>
Daniel Levinson.....	<i>Stage Combat; Fight Direction</i>
Edward (Ned) Loach.....	<i>Academic Portfolio Administrator, Sheridan Visual & Performing Arts</i>
Joanne Massingham (Head of Wardrobe).....	<i>Stagecraft, Production; Costumer</i>
David Matheson.....	<i>Scene Study, Styles, Director</i>
Debra McKay.....	<i>Theatre Organization, Stage Management</i>
Catherine McNally.....	<i>Tutorials</i>
Mimi Mekler.....	<i>Clown</i>
Beth Bruck, Jan Munroe, Kathryn Phillips, Tom Schweitzer, Barbara McLean Wright.....	<i>Stage Managers</i>
Denise Norman.....	<i>Voice and Text, Production, Tutorials</i>
Chantal Panning.....	<i>Box Office</i>
Martin Revermann.....	<i>Drama Studies</i>
Dianne Robertson.....	<i>Undergraduate Advisor, UTM English & Drama</i>
Ed Sahely.....	<i>Improvisation</i>
Meredith Scott.....	<i>Voice & Text, Production</i>
Sarah Scroggie (Head of Properties & Scenic Art).....	<i>Stagecraft, Production</i>
Jim Smagata (Technical Director, Erindale Studio Theatre).....	<i>Stagecraft, Production; Lighting Design</i>
Ralph Small.....	<i>Tutorials, Styles</i>
Tracy Smith.....	<i>Program Support Officer, Sheridan Visual & Performing Arts</i>
Lawrence Switzky.....	<i>Drama Studies</i>
Holger Syme (Chair, UTM English & Drama).....	<i>Drama Studies</i>
Joseph Taylor (Technical Director, MiST).....	<i>Production</i>
Peter Urbanek (Manager of Theatre Operations).....	<i>Stagecraft, Production; Set Design</i>
Matt White.....	<i>Tutorials</i>
Timothy Youker.....	<i>Drama Studies</i>
Patrick Young (Artistic Director, Sheridan Coordinator).....	<i>Scene Study, Professional Practice; Director</i>

•

Cory Doran, Rosemary Dunsmore, Sten Eirik, Glenn Hall, Dakin Matthews, Brian McKay, Andy McKim, Sue Miner, Autumn Smith, Nicole Stamp, Melee Hutton.....	<i>Guest Artists</i>
Neil Silcox (<i>Chair</i>), Roger Beck, Tracey Geobey, Paula Gonsalves, Katherine Kaszas, Heinar Piller, Jenny Salisbury, Nicole St. Martin, Matt White.....	<i>Advisory Committee</i>
Michael Rubinoff.....	<i>Associate Dean, Department of Visual and Performing Arts, Sheridan</i>
Holger Syme.....	<i>Chair, Department of English and Drama, UTM</i>
Ronni Rosenberg.....	<i>Dean, Faculty of Animation, Arts and Design, Sheridan</i>
Amy Mullin.....	<i>Dean and Vice Principal Academic, UTM</i>

The grads of the Sheridan-UTM Theatre and Drama Studies Program are starring on CBC and at Second City and Soulpepper, running theatre companies across the country, writing award-winning plays, and mentoring the next generation of young performers. And it was your participation that helped them to get there. This season continues to be a wild ride and you are still wanted on the voyage! Please come back. We can't wait to see you at the theatre!

Sincerely,



From the Director ...

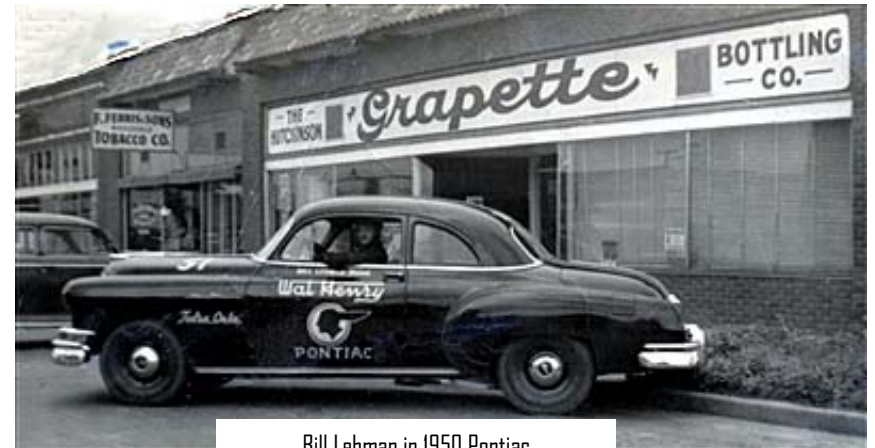
A dashing drifter, a beautiful girl, and the last day of summer ... Kansas, 1952: the year in which Rocky Marciano wins the heavy-weight championship, Dwight D. Eisenhower wins the Presidency, and Elizabeth II assumes the throne. Gary Cooper is starring in *High Noon*, Samuel Becket is premiering *Waiting for Godot*, and Carson McCuller's *Ballad of the Sad Café* has been in bookstores for a year. The hit parade is dominated by such artists as Patti Paige, Doris Day, and Dean Martin, all crooning silkily in glossy arrangements. But just over the horizon, fuelled by teenage hormones, the shotgun marriage of black rhythm and blues with country bluegrass is about to give birth to a phenomenon known as Rock 'n Roll.

A typical kid in small-town Kansas is blissfully unaware of most of this, but Millie is not typical, and neither is her beautiful older sister Madge. Yet like most teenagers, they are both seeking the answers to who they are or could become. Around them as examples they have a number of older women, some of whom have made a truce with the tragedies in their lives, and others who will never come to terms with destiny until they become someone else. Then one day, after a long hot lazy summer, into their reality crashes a sexy prodigal who upsets the apple cart. He too is searching for himself. But no one he touches will ever be quite the same.

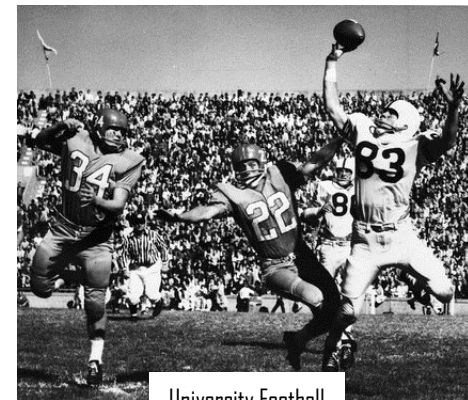
It was an interesting challenge to design a *Picnic* set for the Erindale Studio Theatre stage. Some productions build two complete houses, and virtually all have a street running across the back. For us, of course, that wasn't even close to possible. So our 'streets' run through the lobby and down the backstage hallway, and our 'houses' are meant to echo the transparent lyrical qualities of the text. And musically in our production, the fact that Kansas is still segregated hasn't kept 'Ernie Higgins and his Happiness Boys' from picking up some of their favourite rhythms from black bar bands.

William Inge has crafted in *Picnic* a masterfully funny, touching and sensual group portrait with the texture of real life. It has been a real pleasure to explore this delightfully human play with a group of brave young actors who are beginning to mature in their craft – half of the graduating class of the Sheridan-UTM Theatre and Drama Studies Program. My thanks also to choreographer Sarah Jane Burton, fight coach Daniel Levinson, voice and text coach Denise Norman, assistant director Jaime Lujan, stage manager Barbara McLean Wright, and to our Theatre Erindale Production Staff for their insightful labours in mounting this production.

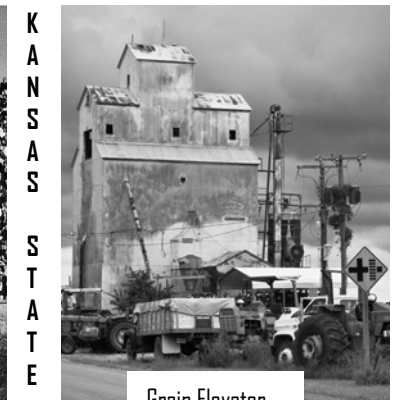
– Patrick Young



Bill Lehman in 1950 Pontiac



University Football



Grain Elevator



Wichita

☞ **Friends of Theatre Erindale** ☞

Our heartfelt thanks to the following generous individuals and organizations who are committed to supporting education in the arts and the future stars of Canadian theatre. Their donations sponsor student scholarships, production materials and equipment, capital projects, and guest artists.

Angels (\$5000 plus)	The Estate of Arthur L. Fernie	
VIPs (\$1000 - \$4999)	Roger and Janet Beck	Nancy Copeland
Boosters (\$500 - \$999)	Patrick Young Victoria Price & Philip Robson	
Fans (\$200 - \$499)	Ron and Lloyd Cameron-Lewis Jack McCaffrey Dr. Beck Sigmon Ian and Shirley Young	
Patrons (\$50 - \$199)	Sarah-Jane Burton Christopher and Susan Carlton Geoff Dunlop Ricky Goebel Sharon McCarthy Barbara Michasiw Ralph Small Glen and Nancy Williams	
Donors (\$25 - \$49)	Edward and Mary Bajus Marie and Michael McCallum Fraser McKee Cheryl & Kenneth Sloan	Diane Hubba Jane Moon

Contact Tara Verma, Coordinator, UTM Office of Advancement (tara.verma@utoronto.ca 905-828-5214) or Jennifer Deighton, Manager, Sheridan Office of Advancement (jennifer.deighton@sheridancollege.ca 905-845-9430 ext. 4032).



Special Thanks to

Robert Paquette Theatre Sheridan
Theatre Orangeville

We acknowledge the generous support of Canadian Actors' Equity Association

About the Author ...



WILLIAM INGE (1913-1973) was, by the end of his forties, one of America's preeminent playwrights. He had created four Broadway hits in a row – *Come Back Little Sheba* (1950), *Picnic* (Pulitzer Prize, 1953), *Bus Stop* (1955), and *The Dark at the Top of the Stairs* (1957) – each of which went on to become a successful film, and had won an Academy Award for Original Screenplay in 1961 for *Splendor in the Grass*, starring Warren Beatty and Natalie Wood.

Inge grew up in the comfortable small town of Independence, Kansas, watching visiting plays for free with his Boy Scout troop. He had a traveling salesman for a father and a mother who ran a boarding house populated by spinster schoolteachers. After starting at Independence Community College, he graduated in Speech and Drama from the University of Kansas in 1935 and completed his Master's at Nashville's Peabody College in 1938. He taught at Stephen's College in Missouri until 1943, when he became Drama Critic for the *St. Louis Times*. Accompanying Tennessee Williams to a Chicago production of *The Glass Menagerie* inspired him to start writing his own plays. *Come Back Little Sheba* and the first version of what was to become *The Dark at the Top of the Stairs* were written while teaching at Washington University in St. Louis from 1946 to 1949.

Inge's 1959 play *A Loss of Roses* was filmed as *The Stripper* in 1963; other screenplays included *All Fall Down* and *Bus Riley's Back in Town*, and he was the script supervisor for 25 hour-long episodes of ABC's *Bus Stop*, adapted from his play. But the 1962 drama *Natural Affection* was a failure on Broadway, and later efforts met with little critical or audience success. Inge retired after two more years of teaching at the University of California and published two novels. He committed suicide by carbon monoxide in Hollywood at the age of 60.

In the last two decades, his star has risen again, and he is now widely regarded as the fellow of Tennessee Williams and Arthur Miller. Noteworthy productions of *Picnic* alone have been mounted by the Shaw Festival (2001), Chicago Writer's Theatre (2008), and on Broadway by the Roundabout Theatre (2013), and his lesser known and even unproduced work is being actively explored. Independence Community College's William Inge Center for the Arts has sponsored the annual William Inge Theatre Festival since 1982, and there is also a William Inge Theater at the University of Kansas.

– Patrick Young

PICNIC

by William Inge

Directed by Patrick Young*
Choreography by Sarah Jane Burton*
Set by Patrick Young
Costumes by Joanne Massingham
Lighting by James W. Smagata
Stage Management by Barbara McLean Wright*

THE CAST:

(in order of appearance)

MRS. HELEN POTTS, *a neighbour*.....Madeleine Brown
HAL CARTER, *a young drifter*..... Roberto Esteves
MILLIE OWENS, *16*..... Olivia Orton
BOMBER, *the paper boy*..... Jaime Lujan
MADGE OWENS, *18*..... Eilish Waller
MRS. FLO OWENS, *a widow, their mother* Laura McCallum
MISS ROSEMARY SYDNEY, *a high school teacher*
who boards with the OwensHannah Ehman
ALAN SEYMOUR, *Madge's boyfriend*Tomas Ketchum
MISS IRMA KRONKITE, *a high school teacher*..... Angelica Appelman
MISS CHRISTINE SCHOENWALDER, *also a teacher*....Kate Cattell-Daniels
HOWARD BEVANS, *a friend of Miss Sydney*.....Zachary Zulauf
Assistant Director & Fight Captain.....Jaime Lujan
Dance Captain.....Hannah Ehman
Assistant Stage Managers.....Giovanna Pandullo, Abby Wilson-Campbell

SCENE: A small town in Kansas, Labor Day, 1952

There will be two ten-minute Intermissions

* With the permission and support of Canadian Actors' Equity Association

PICNIC is produced by special arrangement with Dramatists' Play Service, Inc.

and set design credits. He has worked with such companies as Mountain Dance Theatre, Vancouver Playhouse, National Ballet, Canadian Opera Company, Taffelmusik, Les Grande Ballets Canadien, Stageright Productions, Fanshawe College, Alberta Ballet Company, and Jabberwocky Theatre for Children. He was Production Manager, taught set/lighting design for eight years at the University of Western Ontario. For Theatre Safety Consultants he inspected and consulted on hundreds of theatre projects and was theatre consultant for Fanshawe College's Live Performance Industry facility. Peter's movie and television work includes, *The Bridge to Silence* with Lee Remick and Marlee Matlin, *The Super Dave Show*, *Raffi In Concert*, *Diamonds*, and *X-Men: The Movie*. For *The Lion King*, Peter spent two months inside Pride Rock wiring up effects and motors.

JOANNE MASSINGHAM (Head of Wardrobe, Costumer)

Joanne is pleased to be returning for her twentieth season at Theatre Erindale. Unlike the people she is surrounded by, she has never set foot on a stage when there are audience members in attendance and is happy living in the wings. She is however, always in awe of those who have the courage to step into the lights. Some costume design credits for Theatre Erindale include *The Hypochondriac*, *Lovers in Dangerous Times*, *A Midsummer Night's Dream*, *Hot L Baltimore*, *The Revenger's Tragedy*, *Gut Girls*, *7 Stories*, *Les Belles-Sœurs* and *The Relapse*. She has also designed costumes for *My Fair Lady* and *The Buddy Holly Story* (Stage West), and set and costumes for Artemis Theatre's acclaimed 1998 production of Charles Dickens reading from *A Christmas Carol* (Theatre Passe Muraille). She has been Head of Wardrobe for numerous Theatre Companies including Theatre Sheridan, *Le Théâtre Français de Toronto*, Young Peoples' Theatre, U of T Opera School, York University, Theatre Passe Muraille and Skylight Theatre.

JAMES W. SMAGATA (Technical Director, Lighting Design)

Jim's passion for theatre began in Grade 7 when he was cast as Major-General Stanley in *The Pirates of Penzance*. He has performed lead roles in *Our Town* and *Bus Stop*. Before Jim graduated from Brock University, he acted in several drama department shows, including a 1950's Old West version of Molière's *Tartuffe*. Jim changed horses in the stream and focused on Technical roles, for Rainbow Troupe, Technical Coordinator at Brock, Technical Manager at Grande Prairie Regional College in Alberta, Chief of Production Services at Nepean Centrepointe Theatre, and now Technical Director at UTM. In Alberta he directed a few shows: *The Gin Game*, *Portrait in Black*, *The Creature Creeps!*, *Little Shop of Horrors*, performed as Gandalf in the musical *The Hobbit*, and Mike in Jim Betts' musical *Thin Ice*. In 1995, he directed and performed in the Drama Club's production of *Pump Boys and Dinettes*. He was Technical Director and Lighting Designer for the 2001 Mississauga Arts Council Awards, and worked as a sound technician at the Shaw Festival. Jim spends his "spare time" as a post-production sound engineer and voice actor for several web-based audio drama companies.

Direction...

PATRICK YOUNG (Director) graduated in English from Victoria College, University of Toronto, trained in Theatre on a graduate scholarship at Indiana University, and was soon a well-known actor across Canada. His Toronto credits included the record-breaking hits *Flicks*, *The Relapse*, and the original production of *Automatic Pilot*, as well as *Chinchilla* and the last national tour of *Spring Thaw*. Elsewhere the range included *Misalliance* and *Threepenny Opera* in Boston, *Uncle Vanya* and *Tobacco Road* in Indiana, *Windsor* in Charlottetown, *Dames at Sea* in Winnipeg, *Hay Fever* across BC and *Scapin* across Ontario, plus guest starring on such TV series as *The Great Detective* and *Night Heat*. During the 1980s, he branched into playwriting, directing, and teaching. He is the author of the award-winning biographical plays "Winnie" (also filmed for television), *Aimee!*, and *Abigail, or The Gold Medal*, plus numerous industrial shows. He has held the posts of Artistic Director of Dalhousie Theatre Productions in Halifax, Director/ Dramaturg of the Music Theatre Writers' Colony at the Muskoka Festival, and Associate Director/Playwright in Residence at the Lighthouse Festival Theatre. Teaching includes Waterloo, Dalhousie, George Brown, Humber, and Gaya College in Malaysia. He is the founding Artistic Director of Theatre Erindale and the founding Sheridan Coordinator of the Theatre and Drama Studies Program (which is now in its twenty-fourth year). For Theatre Erindale he has directed eighteen plays and designed or adapted several more; for Theatre Sheridan two; and credits elsewhere include the second production of *Midnight Madness*, the World Première of *The Growing Season*, *The Shadow Box*, *The Crucible*, *Mandragola*, *Split*, *Cheek to Cheek*, *You Can't Take it With You*, *Waiting for the Parade*, and more new play workshops than he can count.



SARAH JANE BURTON (Choreographer & Movement Coach) Ms. Burton's professional career spans performing as a principal actor/dancer in NYC, Broadway and U.S. summer stock, to coaching actors in simulating weightlessness in space for L.A. television series. Her choreography has appeared in over 60 productions in theatres across Ontario, New York, West Africa and France. SJ has received numerous awards, including the prestigious Dora Award nomination for Outstanding

Choreography in a Play. She has directed/choreographed musicals, operas, and a CBC television special. Prof. Burton, a Certified Laban Movement Analyst, enjoys working with the talented young students in the Sheridan College and UTM programs.

PETER URBANEK (Manager of Theatre Operations)

This is Peter's fifteenth season at Theatre Erindale. For the past thirty-five years he has worked in theatres across the country. His past credits include Production Manager for: Magnus Theatre, The University of Western Ontario, Markham Theatre and the Globe Theatre. Peter has over four hundred lighting

Please turn electronic devices completely off.

Photographs and recordings are strictly prohibited.

We regret that, out of consideration for both the audience and the performers, latecomers and re-entries are not permitted.

FOR PICNIC

Music Editing..... Patrick Young
Voice & Text Coach Denise Norman
Fight Coach..... Daniel Levinson
Lighting OperatorKaitlyn MacKinnon
Sound Operator Naomi Timmer
Running Crew Giovanna Pandullo
Set Crew..... *Johnathan Muench, *Lauren Wolanski (*chiefs),
..... Noah Heeney, Jillian Robinson, Jake Settle,
..... Hannah Termaat, Khira Wieting
Properties & Paint Crew*Caleb Harwood, *Brett Houghton,
..... *Bryn Kennedy, *Thin Nguyen, Katherine McDonald (*chiefs),
..... Michael Ruhs, Zenia Sethna, Stanley Tomlinson,
..... Jackson Watt-Bowers, Kaitlyn White
Wardrobe Crew..... *Sarah Hime, *Emily Thorne (*chiefs),
..... Nikolai Afanasev, Emily Clarke,
..... Mackenzie Connelly, Jennifer Francis
Make-up and Hair Consultant..... Samantha Miller-Vidal
Poster Design Patrick Young
Front of House Crew Chief..... Hershel Blatt

FOR THEATRE ERINDALE

Artistic Director Patrick Young
Executive Producer Nancy Copeland
Manager of Theatre OperationsPeter Urbanek
Assistant to Manager of Theatre Operations..... Kathryn Phillips
Technical Director James W. Smagata
Head of Wardrobe..... Katrina Carrier, Joanne Massingham
Wardrobe Assistant..... Olivia Brouwer, Nancy Bowe
Head of Properties and Scenic Art..... Sarah Scroggie
Stage Carpenters Joseph Taylor, Kathryn Phillips
Production Assistants..... Alessa Dufresne , Avery Logan, Marissa Otto,
..... Giovanna Pandullo, Nathaniel Voll
Business Manager Rob Eberts
Box Office Manager Chantal Panning
Box Office Staff..... Danelia Bayaninska, Elsie Ikhariale, Precious Sidambe
Program..... Merrylee Greenan
Brochure, Season Poster and Program Cover DesignAlison Dias
On Campus Promotions Sarah Kern

The Cast . . .

ANGELICA APPELMAN, 4th Year - Theatre and Drama Studies
Home Town: Kitchener, ON **Other Training:** Vocal Major Eastwood Collegiate Institute Arts Program **For Theatre Erindale:** Montague - *The Capulets and Montagues*; Pretty Lady - *The Rover*; The Company - *Rebel Daughter*; Drama; Props Crew - *A Midsummer Night's Dream, Macbeth*; Wardrobe Crew - *Good Night Desdemona (Good Morning Juliet), Semi-Monde* Set Crew - *Nicholas Nickleby, 1917: Halifax Explosion* **Beck Festival:** Thump - *Cagebirds*; Sharon Styx - *Neck-Breaking Car-Hop* **Other Companies:** Rusty - *Footloose*; The Writer - *GOD* (Eastwood Collegiate Institute); Giuliana, Isabella - *La Lena* (Maschere Duemondi) **Favourite Saying:** "We must overcome the notion that you must be regular...it robs you of the chance to be extraordinary." - Uta Hagen

MADELEINE BROWN, 4th Year - Theatre and Drama Studies
Home Town: Peterborough, ON **Other Training:** Royal Conservatory of Music Grade 8 Piano **For Theatre Erindale:** Fesenio - *The Capulets and Montagues*; Miss Jenny - *The Wifings*; The Company - *Rebel Daughter*; Assistant Stage Manager - *Macbeth*; Props Crew - *Semi-Monde, In Midst of Alarms* **Beck Festival:** Maine Lewes - *Sundry* **Other Companies:** Alfred - *Rosencrantz and Guildenstern Are Dead* (Hart House Theatre); Maria - *The Trail of Embrace* (U of T Drama Festival); Administrative Intern: (Stratford Shakespeare Festival)

KATE CATTELL-DANIELS, 4th Year - Theatre and Drama Studies
Home Town: Toronto, ON **Other Training:** RADA Shakespeare Summer School, Etobicoke School of the Arts, Stratford Shakespeare School Theatre Performance Intensive **For Theatre Erindale:** Rutilio/Dorina - *The Capulets and Montagues*; Miss Polly/Mrs. Hobbins - *The Wifings*; The Company *Rebel Daughter*; Props Crew Chief - *Farndale, A Midsummer Night's Dream, Macbeth* **Beck Festival:** Director - *Picking Up the Pieces*; Dolores Jones - *Sundry* **Other Companies:** Madeleine - *Albertine in Five Times* (Etobicoke School of the Arts); The Writer, Mother - *Hannah's Play* (Sears Festival); Norah - *Congratulations! You Need Glasses!* (Paprika Festival); **Favourite Saying:** "Guess if you can, choose if you dare." - Corneille

Stage Management...



BARBARA MCLEAN WRIGHT (Stage Manager)
Barb is pleased to be working again at Theatre Erindale having previously stage managed *A Stitch In Time, A Midsummer Night's Dream, Our Country's Good, The Winter's Tale* and *The Spot/String of Pearls*. She has worked for several theatre companies including Mirvish Productions, The Grand Theatre, Theatre Aquarius, Ross Petty Productions, Centaur Theatre, Drayton Entertainment, Lighthouse Festival Theatre, Theatre Orangeville, and Sudbury Theatre Centre. Barb wishes to thank Patrick for once again giving her the opportunity to be a part of mentoring the students, our theatrical future. She also wishes to thank the cast and crew for their hard work. As always she sends a big thanks to her family and friends for their unending love and support.

GIOVANNA PANDULLO (Assistant Stage Manager)

and

ABBY WILSON-CAMPBELL (Assistant Stage Manager)



KAITLYN MACKINNON (Lighting)
2nd Year - Sheridan Technical Production
Home Town: Huntsville, ON
For Theatre Sheridan: Production Assistant for Theatre Sheridan - *Dirty Rotten Scoundrels, Godspell*; Lighting Crew/Spotlight Operator - *Parade*; Audio Crew/Monitor Mix - *Hello Dolly!*

NAOMI TIMMER (Sound)
2nd Year - Sheridan Technical Production
Home Town: Kitchener, ON
For Theatre Sheridan: ASM - *Hello Dolly!* Wardrobe Crew - *Dirty Rotten Scoundrels, A Doll's House*





INCIDENTAL MUSIC FOR *PICNIC*

Ernie Higgins and his Happiness Boys are not actually playing everything you hear in *Picnic*.

The real artists are:

Bill Evans: *Peace Piece*

The O'Neill Brothers Group: *Unchained Melody*

All Star Karaoke: *Shake, Rattle & Roll*

Sonny Thompson: *Long Gone Pt. 1*

The Jazz Couriers: *My Funny Valentine*

Gerry Mulligan with Chet Baker: *My Funny Valentine*

HANNAH EHMAN, 4th Year - Theatre and Drama Studies

Home Town: Porcupine, ON **For Theatre Erindale:** Juliet - *The Capulets and Montagues*; Mrs. Sapient - *The Wiltings*; The Company - *Rebel Daughter*; Wardrobe Crew Chief - *A Midsummer Night's Dream*; Props Crew Chief - *Farndale* **Beck Festival:** Twitting - *Cage Birds*; Ingenue - *Untitled!: The Musical*, Juliet-Romeo Revised **Other Companies:** Gina - *Bruised Porcelain* (UofT Drama Fest); Belle - *Beauty and the Beast* Rusty - *Footloose* (O'Gorman High School) Louisa - *Sound of Music* (Take Two Theatre) **Favourite Saying:** "The question isn't who is going to let me; it's who is going to stop me." - Ayn Rand

ROBERTO ESTEVES, 4th Year - Theatre and Drama Studies

Home Town: Toronto, ON **For Theatre Erindale:** County Paris - *The Capulets and Montagues*; Frederick - *The Rover*; The Company - *Rebel Daughter*; Freddy Palmer - *Semi-Monde*; Lighting, Sound Operator - *A Midsummer Night's Dream* **Beck Festival:** Ben - *Picking Up The Pieces* **Other Companies:** The American - *Twilight Soldier* (UofT Drama Festival); Townsfolk - *The Travelling Salesman & his Magical Suitcase of Desires* (Zanni Arte) **Favourite Saying:** "Every brush stroke on the canvas ... - this accumulation of many small acts combines to shape a final work of art. And so ... each brief choice builds gradually, day by day, to shape both character and destiny." - Richelle E. Goodrich

TOMAS KETCHUM, 4th Year - Theatre and Drama Studies

Home Town: Barrie, ON **For Theatre Erindale:** Tybalt - *The Capulets and Montagues*; Dabler - *The Wiltings*; The Company - *Rebel Daughter*; Lighting and Sound Operator - *Semi-Monde*; Front of House Manager - *Macbeth* **Other Companies:** Bernard Nightingale - *Arcadia* (UTM Drama Club); Billy Bones - *Treasure Island* (Theatre by the Bay) **Favorite Saying:** "Battle not with monsters, lest ye become a monster, and if you gaze into the abyss, the abyss gazes also into you." - Friedrich Nietzsche

JAIIME LUJAN, 4th Year - Theatre and Drama Studies

Home Town: Brampton, ON **Other Training:** Mayfield Secondary School Drama Program, Brampton Theatre School **For Theatre Erindale:** Marin - *The Capulets and Montagues*; Stephano - *The Rover*; The Company - *Rebel Daughter*; Luke Bellows - *Semi-Monde* **Beck Festival:** Elias Jones - *Sundry*; Director - *Catantonia*; Writer - *Pearl in a Pink Dress*; Chorus #4 - *Untitled! The Musical* **Other Companies:** Spirit - *Salvador* (Toronto Fringe Festival); Director - *Marianne, Are You Asleep?* (UofT Drama Festival); Transylvanian - *The Rocky Horror Show* (Theatre Alive); Winthrop Paroo - *The Music Man* (Mayfield Secondary School) **Favorite Saying:** "I don't think two people could have been happier than we have been," - Virginia Woolf.

LAURA MCCALLUM, 4th Year - Theatre and Drama Studies

Home Town: Kitchener, ON **For Theatre Erindale:** Lidio/Belardo - *The Capulets and Montagues*; Mlle. Pomponette - *A Stitch in Time*; Company - *Rebel Daughter*; Assistant Stage Manager - *Macbeth*; **Beck Festival:** Gloom - *Cagebirds* **Other Companies:** Director - *Some Counterspace* (U of T Drama Festival); Assistant Director - *Arcadia* (UTM Drama Club); Pep Squad Member - *High School Musical* (Drayton Entertainment); **Favourite Saying:** If our school ever performed a play about the French Revolution, she could play the guillotine. - Robin Benway

OLIVIA ORTON, 4th Year - Theatre and Drama Studies

Home Town: Blind River, ON **For Theatre Erindale:** Dorothea - *The Capulets and Montagues*; Mme. D'Herblay - *A Stitch in Time*; Company - *Rebel Daughter*; Assistant Stage Manager - *Semi-Monde* **Other Companies:** Aurora - *Pur.Gat.Ory* (U of T Drama Festival); Thomasina Coverly - *Arcadia* (UTM Drama Club); Marie, Vero - *Bloc Sept* (Theatre Jeunesse-Nord); Salazi - *La Fille Prodigieuse* (Theatre Jeunesse-Nord) **Favorite Saying:** "If you can't get rid of the skeleton in your closet, you'd best teach it to dance." - George Bernard Shaw

EILISH WALLER, 4th Year - Theatre and Drama Studies

Home Town: London, ON **Other Training:** Theatre Performance Summer Intensive, Stratford Festival **For Theatre Erindale:** Principessa of Verona - *The Capulets and the Montagues*; Florinda - *The Rover*; The Company - *Rebel Daughter*; Assistant Stage Manager - *Semi-Monde* **Beck Festival:** Eve - *Catantonia* **Other Companies:** Director - *Bruised Porcelain*; Herodias - *Salome* (UTM Drama Club) **Favorite Saying:** "Find the critic that mines the gold, ignore those that only look for coal." - Joyce DiDonato

ZACHARY ZULAUF, 4th Year - Theatre and Drama Studies

Home Town: Newmarket, ON **Other Training:** George Brown Theatre School, Armstrong Acting Studio **For Theatre Erindale:** Don Pedro - *The Rover*; The Company - *Rebel Daughter*; Wardrobe Crew - *1917: The Halifax Explosion*; Properties Crew - *Goodnight Desdemona (Good Morning Juliet)* **Other Companies:** John - *The Admirable Chrichton* (GB Theatre School); Bill - *Never Swim Alone* (Dr Denison Drama) **Ambition:** "To leave my mark, teach someone something, and maybe make a few people laugh along the way"

If you have any questions or comments regarding your experience please contact:

Peter Urbanek
Manager of Theatre Operations
Department of English and Drama, University of Toronto Mississauga
3359 Mississauga Road North, Rm 290A NB
Mississauga, ON L5L 1C6

905-569-4739 Voice, 905-828-5202 FAX
email: p.urbanek@utoronto.ca

Twitter @TheatreErindale

Facebook Theatre Erindale



U OF T'S PERFORMING ARTS LEADER SINCE 1919

2014/2015
Hart House
Theatre Season

THE IMPORTANCE OF BEING EARNEST
SEPT. 19–OCT. 4, 2014

THE TEMPEST
NOV. 5–22, 2014

JESUS CHRIST SUPERSTAR
JAN. 16–31, 2015

THIS IS FOR YOU, ANNA
FEB. 27–MAR. 7, 2015

SEASON SPONSORS:
TD mbna Manulife Financial
PARTNERS:
HartHouse www.harthousetheatre.ca