

The Schreiber Wood Project: Life at a Glance as seen through Ceramics

Mahalia Johnna BAGUIO, Cinda JOHNSON, Sarah RANLETT, Michael BRAND, Trevor J. ORCHARD
Department of Anthropology, University of Toronto Mississauga

We wish to acknowledge this land on which the University of Toronto operates. For thousands of years it has been the traditional land of the Huron-Wendat, the Seneca, and most recently, the Mississaugas of the Credit River. Today, this meeting place is still the home to many Indigenous people from across Turtle Island and we are grateful to have the opportunity to work on this land.

Introduction/Background

This poster highlights select ceramic pieces from the large artifact assemblages that have resulted from the Schreiber Wood Project to date. Specifically, we examine ceramics that have been manufactured by Haviland & Co, Jaeger, Thomas & Co, Doulton Lambeth, and the Brantford Pottery Works, among others. The chosen pieces provide insights into the lifestyle of the Schreiber family during the late 1800s.

Identified Makers Marks

Haviland and Co.

Haviland and Co. was a leader in the development of china with their production of chromolithographic decorations on their porcelain (Haviland Online, 2015). This trend would then be followed by other china manufacturers around the world. The sherd in our collection (Figure 1) most likely belonged to a dining set that could have been used by the Schreiber family as either an informal or formal dining set. Based on the maker's mark present on the sherd in our possession, the purchase date of this vessel can be assumed to be between 1888 and 1896. It is also important to note that the maker's mark indicates that this vessel was imported from France. With this information, it is possible that this could mean the Schreiber's were wealthy enough to afford products sold abroad.

Underglaze Green Marks	Date
H&C ^o	1876-1879
H&C ^o	1876-1886
H&C ^o	1877
H&C ^o L	1876-1889
H&C ^o DEPOSE	1887
H&C ^o L FRANCE	1888-1896



Figure 1. Dating chart based off Haviland Makers Marks (Holland, 2006, left). Image of the sherd from Schreiber Wood Project (right).

Jaeger and Co.

Jaeger and Co. was a porcelain manufacturing company based in Germany that operated from 1872 to 1986 (Marshall, 2004). Throughout this time, transitioned from a small decoration company to a tableware/giftware shop. The maker's mark on the pieces of flatware from our collection (Figure 2) dates this vessel from 1872-1898. There is no sign that these vessels were available for sale in Canada or England, so it is possible that this vessel was brought back, or ordered from, Germany.



Figure 2. Image of Jaeger and Co. sherd from Schreiber Wood Project

Brantford Pottery

One vendor that was prominent in this collection of ceramics was Brantford Pottery with approximately 4 different vessels. Brantford is one of the earliest manufacturers of stoneware and is considered one of the largest pottery processors in all of Canada. (Webster, 1968). This is based on the large marketing area it dominated along with the great variety of products they had available. These vessels could potentially have belonged to the Schreiber's because of the design that can be seen on the maker's mark on one of our sherds (Figure 3). This would place the date of purchase between the years 1873 and 1894 which lines up with when the Schreiber's were living in Canada. Therefore, it is likely that the Schreiber family would have used these as large storage vessels as the large "5" visible is an indicator of the volume in gallons that the vessel can hold.



Figure 3. Image of Brantford Pottery from the Schreiber Wood Project

Doulton Lambeth

Doulton Lambeth's pottery was originally created in the Lambeth area of London in 1815 where they specialized in pottery and figurines (Perry, 2011). In the case of the Schreiber's collection (Figure 4), the maker's marks were found on the bases of ink bottles used for storing ink. Upon further analysis of the maker's mark, these items can be dated back to between 1858 and 1910. As the Schreiber's came to Canada around 1875, it is possible that they purchased it ahead of time and brought the bottles with them, or they could have been shipped to Canada from England.



Figure 4. Image of Doulton Lambeth sherd from Schreiber Wood Project (left). Dating chart of Doulton and Lambeth makers marks (Lambeth Archives, 2020, right).

Mystery Makers Mark

Due to the state of the makers mark on this sherd (left top image), we have not been able to provide a clear identification within our collection. However, we have two leads on what the sherd could be from.

The first lead is the makers mark of Caughley China Works, a type of earthenware pottery from Shropshire, England. This is loosely based off #2 in the bottom left image, where the "S" and the crossed handles of the sword is like what we have in our collection.

Our second possibility is the maker's mark of Boulogne Paris, a French porcelain manufacturer from Caen, France. Comparing the mark to the chart on the right, the maker's mark could be representative of two sword handles crossed over each other.

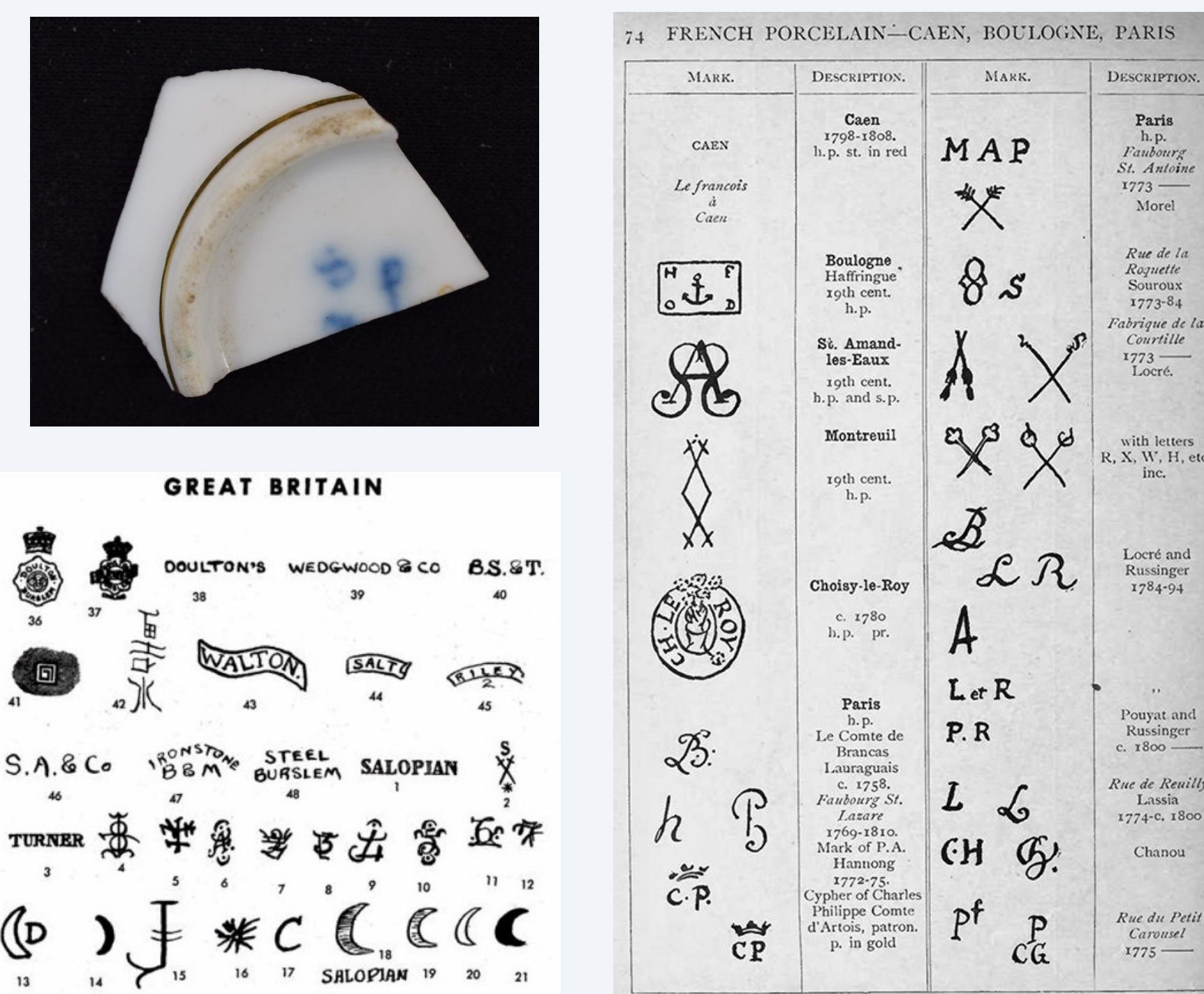


Figure 5. Image of the unidentified sherd from Schreiber Wood Project (top left). Image of English makers marks used to help identify the sherd (Old and Sold Antiques Auction and Marketplace, n.d., bottom left). Image of French makers marks used to identify the sherd (Rae, n.d., right).

Possible Store Fronts

China Hall

China Hall was a four-storey building located along King Street East, and later along Yonge Street in Toronto that was known for selling ceramic wares (Blauberg 1992). During its operation between 1879-1900, it was known to have the best patronage within the city, and by extension, the country. It is likely that most of the Schreiber Family ceramic wares were purchased from China Hall, as its operational dates are contemporary with the family inhabiting Springfield.

Hart & Company

Hart & Company was one of Toronto's main firms located along King Street West for booksellers, publishers, general and manufacturing stationers (Mulvaney, 1884). It is possible that the Schreiber Family could have purchased their Doulton Lambeth Ink bottle from here, however the notion of their bottle being brought with them from England is also likely.

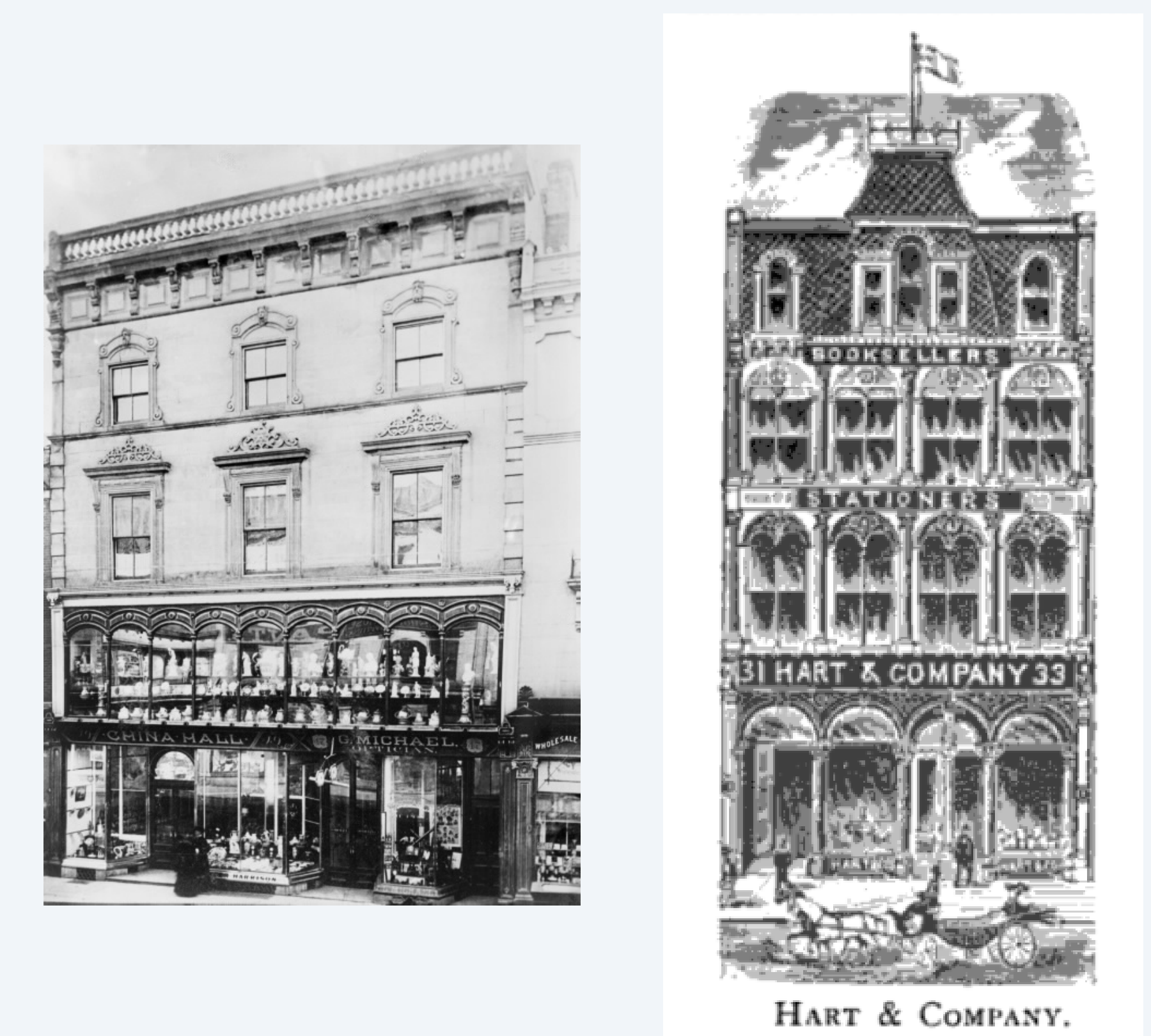


Figure 6. Image of China Hall (Blauberg, 1992, left). Image of Hart & Company (Mulvaney, 1884, right).

Concluding Remarks

The collection of makers marks that we have identified showcases the relationship the Schreiber family had with local vendors in Toronto during the late 1800's. The findings of Brantford pottery within the collection shows the prominence of ceramics within the Canadian market. Additionally, the findings of imported ceramic ware like Haviland and Co. can help infer the economic status of the Schreiber family in Springfield, as imported goods may have had a higher value than local ceramic makers.

As this project moves forward, we hope to successfully identify our "mystery mark", and more of the pieces we have in the collection to allow for a better glimpse into the life of the Schreiber family.

Blaubergs, E. (1992). Glover Harrison and China Hall: Majolica Butters, Five O'Clock Teas and Tete-a-Tete Sets. *Arch Notes*, 5-9.
Haviland Online (2015). Haviland China History. Retrieved from <https://www.havilandonline.com/history.htm>
Holland, P. (2006). H&C L - a mark of Haviland & Co or not? Retrieved from <https://www.figurines-sculpture.com/hoc-l-a-mark-of-haviland-co-or-not.html>
Lambeth Archives (2020). Doulton & Watts Lambeth Pottery: Trade Marks. Retrieved from <https://boroughphotos.org/lambeth/doulton-watts-lambeth-pottery-trade-marks/>
Marshall, C.O. (2004). Germany / Bavaria / Marktredwitz. Retrieved from <https://www.porcelainmarksandmore.com/germany/bavaria/marktredwitz-02/index.php>
Mulvaney, C.P. (1884). *Toronto: Past and Present: A Handbook of the City*. W.E. Craiger Publisher.
Old and Sold Antiques Auction and Marketplace (n.d.). Guide to Pottery & Porcelain Marks. Retrieved from <http://www.oldsold.com/pottery/greatbritain.shtml>
Perry, M. (2011). Doulton History. Retrieved from <http://www.potteryhistories.com/doultonhistory.html>
Rae, A. [Amber]. (n.d.). Porcelain & Pottery marks [Pinterest Post]. Retrieved September 1 2020, from <https://www.pinterest.com.au/pin/462463455455941980/>
Webster, D.B. (1968). *The Brantford Pottery*. University of Toronto Press.